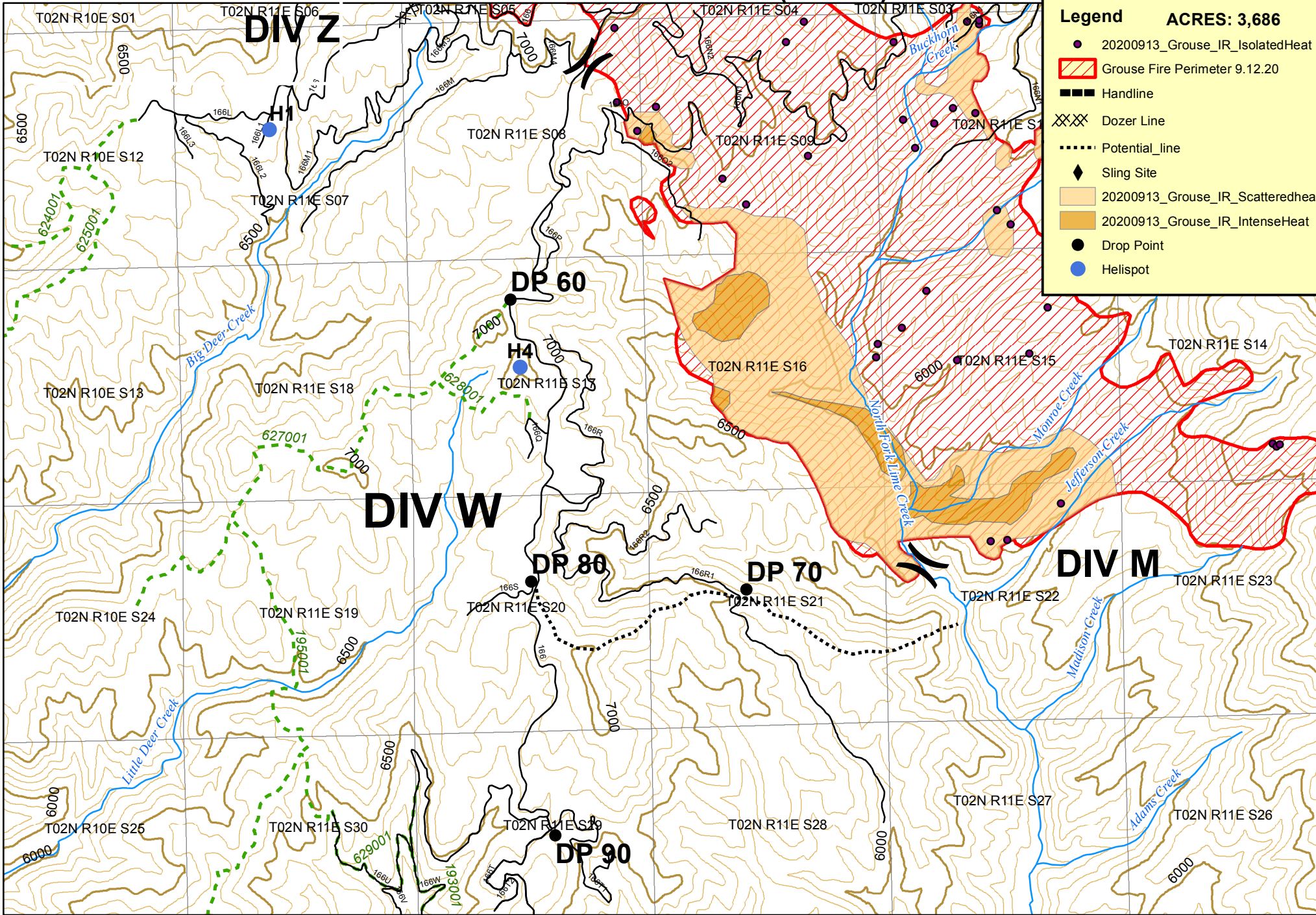


Grouse Fire Perimeter: DIV W (9/13/20)

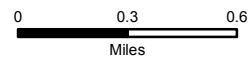


Legend **ACRES: 3,686**

- 20200913_Grouse_IR_IsolatedHeat
- ▨ Grouse Fire Perimeter 9.12.20
- ▬▬▬ Handline
- XXXX Dozer Line
- ⋯ Potential_line
- ◆ Sling Site
- 20200913_Grouse_IR_Scatteredheat
- 20200913_Grouse_IR_IntenseHeat
- Drop Point
- Helispot

Prepared by: Information Resources Management
 Supervisor's Office
 Boise National Forest
 Boise, Idaho

Produced: 9/13/2020 By: zvanabbema
 File: T:\FS\NFS\Boise\Program\5100Fire\GIS\Workspace\Van Abbenal\Ble burn\Grouse Fire\Product\DIV_W.9.12.20.mxd



UTM Zone 11N
 NAD83

The U.S. Department of Agriculture, Forest Service uses the most current and complete data available. GIS data and product accuracy may vary. They may be developed from sources of differing accuracy, accurate only at certain scales, based on modeling or interpretation, incomplete while being revised or created, etc. Using GIS products for purposes other than those for which they were created, may yield inaccurate or misleading results. The Forest Service reserves the right to correct, modify, or replace GIS