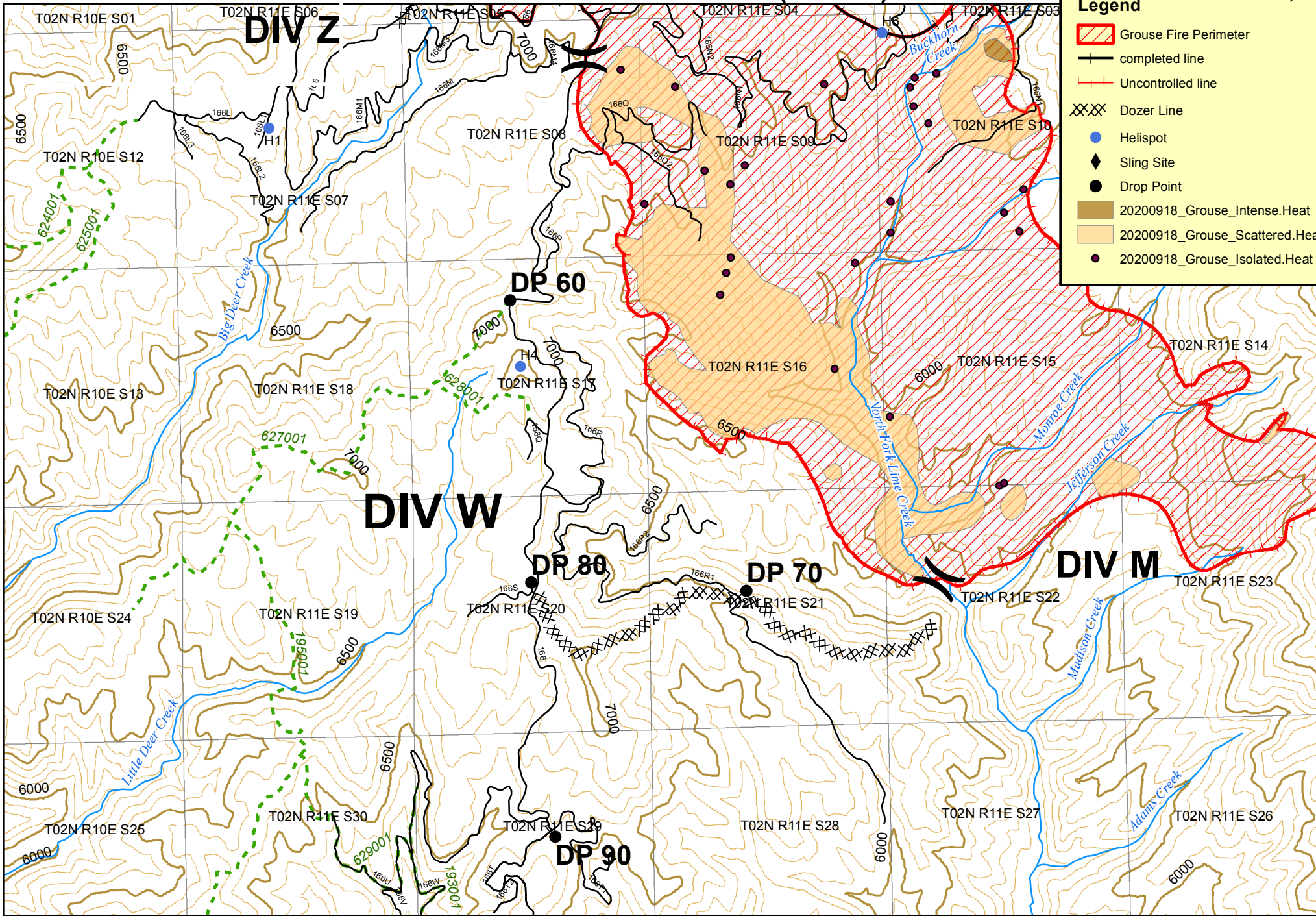


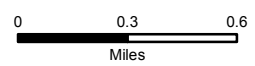
# Grouse Fire Perimeter: DIV W (9/19/20)

ACRES: 3,980



**Legend**

- Grouse Fire Perimeter
- completed line
- Uncontrolled line
- Dozer Line
- Helispot
- Sling Site
- Drop Point
- 20200918\_Grouse\_Intense.Heat
- 20200918\_Grouse\_Scattered.Heat
- 20200918\_Grouse\_Isolated.Heat



The U.S. Department of Agriculture, Forest Service uses the most current and complete data available. GIS data and product accuracy may vary. They may be developed from sources of differing accuracy, accurate only at certain scales, based on modeling or interpretation, incomplete while being revised or created, etc. Using GIS products for purposes other than those for which they were created, may yield inaccurate or misleading results. The Forest Service reserves the right to correct, modify, or replace GIS products without notification.

UTM Zone 11N  
 NAD83