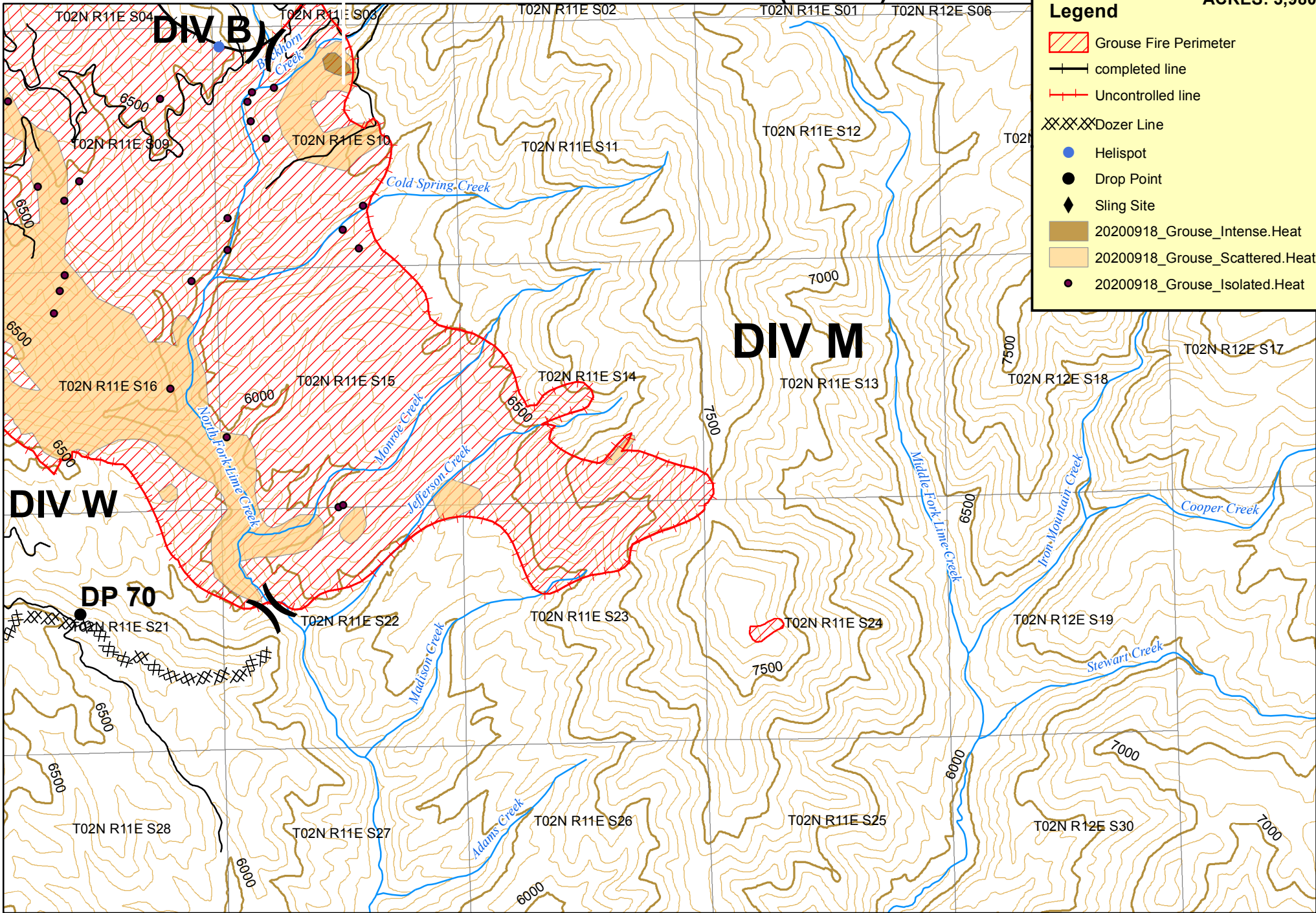


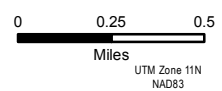
Grouse Fire Perimeter: DIV M (9/20/20)

ACRES: 3,980



Legend

- Grouse Fire Perimeter
- completed line
- Uncontrolled line
- Dozer Line
- Helispot
- Drop Point
- Sling Site
- 20200918_Grouse_Intense.Heat
- 20200918_Grouse_Scattered.Heat
- 20200918_Grouse_Isolated.Heat



The U.S. Department of Agriculture, Forest Service uses the most current and complete data available. GIS data and product accuracy may vary. They may be developed from sources of differing accuracy, accurate only at certain scales, based on modeling or interpretation, incomplete while being revised or created, etc. Using GIS products for purposes other than those for which they were created, may yield inaccurate or misleading results. The Forest Service reserves the right to correct, modify, or replace GIS products without notification.

Prepared by: Information Resources Management
 Supervisor's Office
 Boise National Forest
 Boise, Idaho

Produced: 9/20/2020 By: zvanabbema
 File: T:\FS\NFS\Boise\Program\5100\Fire\GIS\Wildfire\2020\2020Grouse\Products\DIV Maps\DIV_M_9.12.20.mxd