
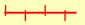
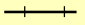
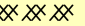





# Grouse Fire Perimeter 9/20/20

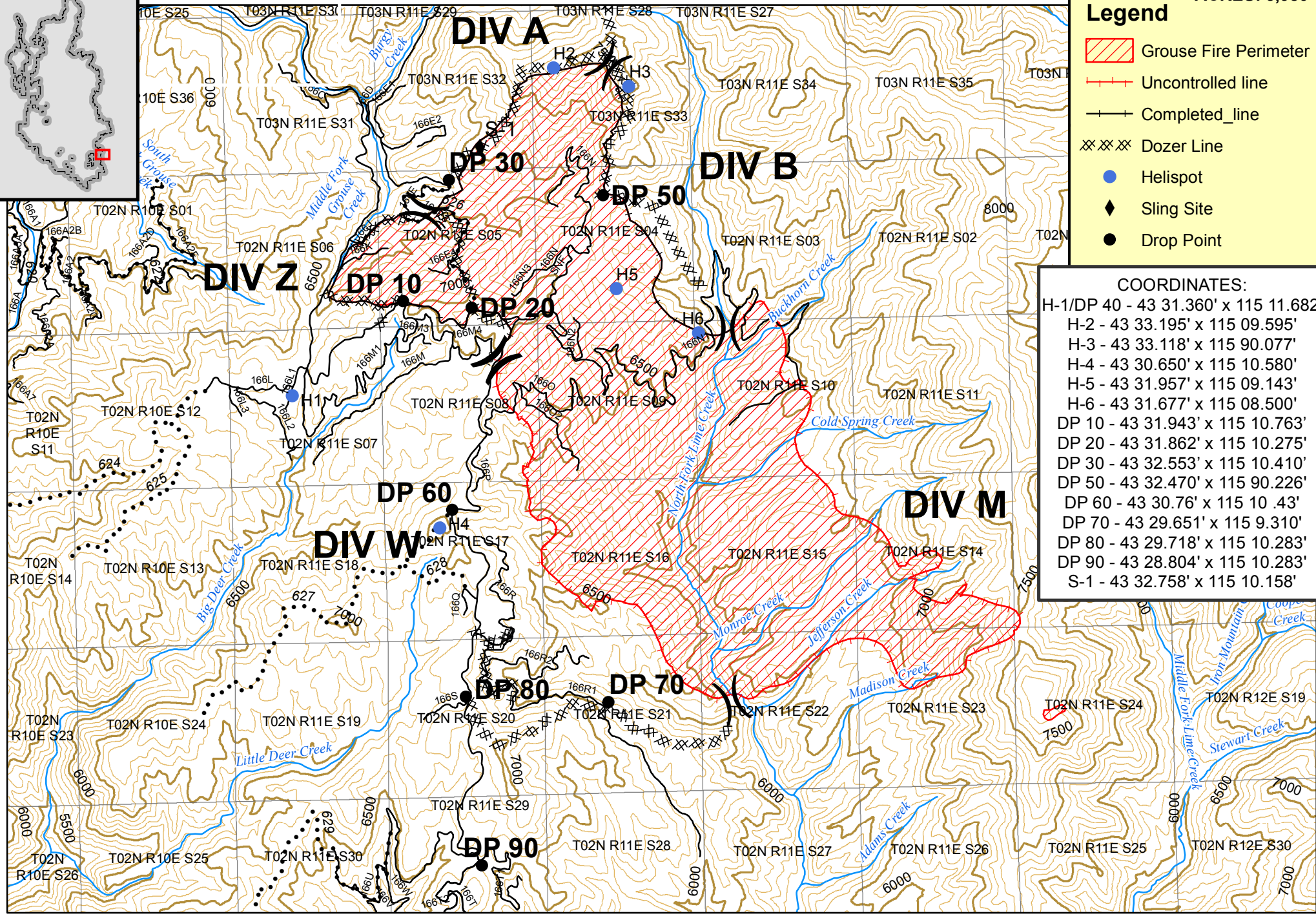
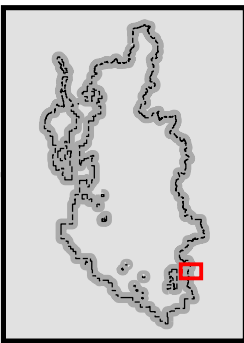
ACRES: 3,980

### Legend

-  Grouse Fire Perimeter
-  Uncontrolled line
-  Completed\_line
-  Dozer Line
-  Helispot
-  Sling Site
-  Drop Point

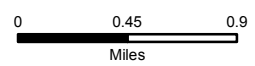
### COORDINATES:

H-1/DP 40	- 43 31.360' x 115 11.682'
H-2	- 43 33.195' x 115 09.595'
H-3	- 43 33.118' x 115 90.077'
H-4	- 43 30.650' x 115 10.580'
H-5	- 43 31.957' x 115 09.143'
H-6	- 43 31.677' x 115 08.500'
DP 10	- 43 31.943' x 115 10.763'
DP 20	- 43 31.862' x 115 10.275'
DP 30	- 43 32.553' x 115 10.410'
DP 50	- 43 32.470' x 115 90.226'
DP 60	- 43 30.76' x 115 10.43'
DP 70	- 43 29.651' x 115 9.310'
DP 80	- 43 29.718' x 115 10.283'
DP 90	- 43 28.804' x 115 10.283'
S-1	- 43 32.758' x 115 10.158'



Prepared by: Information Resources Management  
 Supervisor's Office  
 Boise National Forest  
 Boise, Idaho

Produced: 9/20/2020 By: zvanabamba  
 File: T:\FS\NFS\Boise\Program\5100\Fire\GIS\Wildfire\2020\2020\Grouse\Products\Ops\_Grouse.mxd



The U.S. Department of Agriculture, Forest Service uses the most current and complete data available. GIS data and product accuracy may vary. They may be developed from sources of differing accuracy, accurate only at certain scales, based on modeling or interpretation, incomplete while being revised or created, etc. Using GIS products for purposes other than those for which they were created, may yield inaccurate or misleading results. The Forest Service reserves the right to correct, modify, or replace GIS

UTM Zone 11N  
 NAD83