
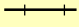
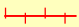
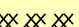





Grouse Fire Operations Map

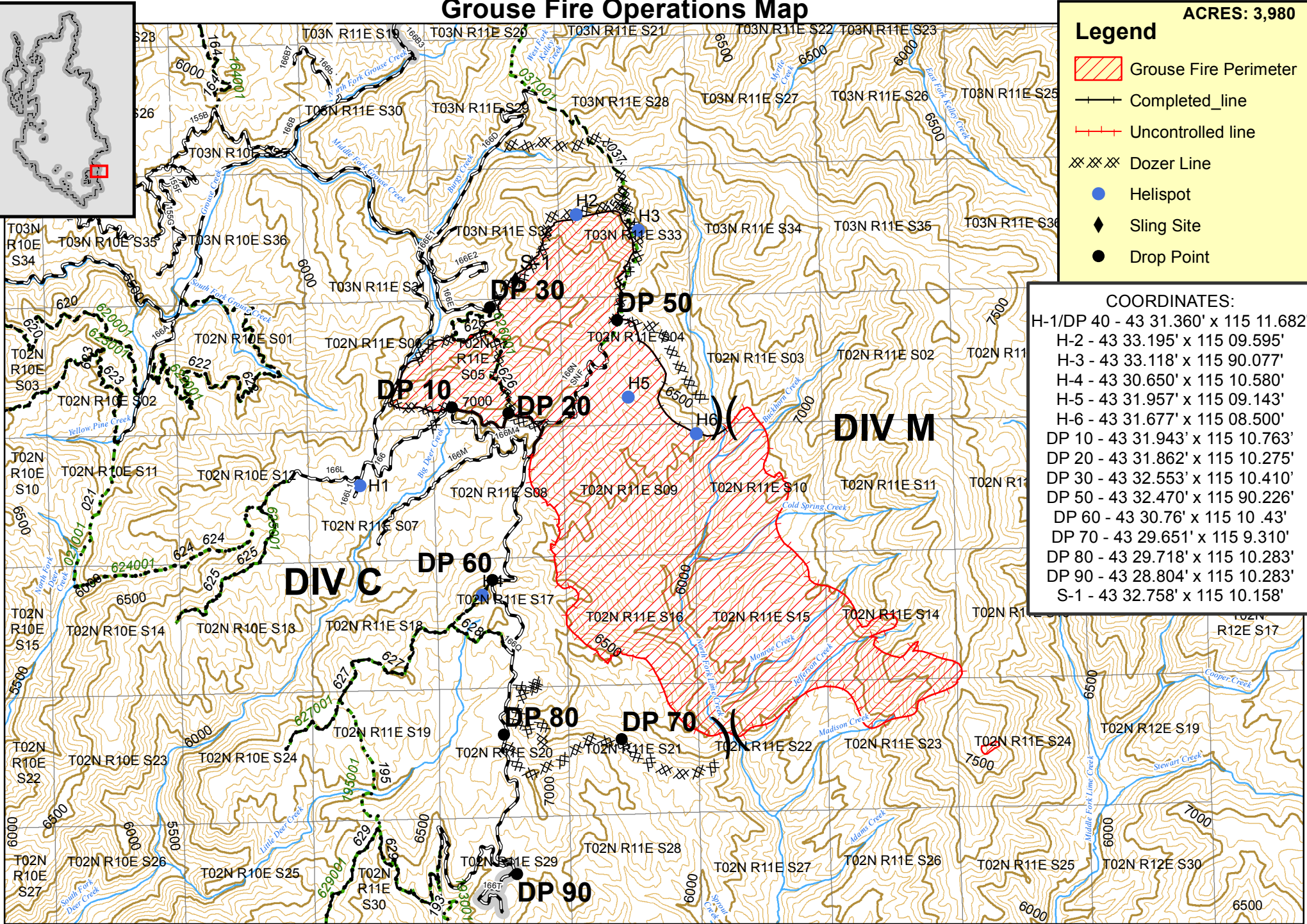
ACRES: 3,980

Legend

-  Grouse Fire Perimeter
-  Completed_line
-  Uncontrolled line
-  Dozer Line
-  Helispot
-  Sling Site
-  Drop Point

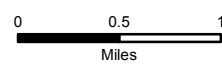
COORDINATES:

H-1/DP 40	- 43 31.360' x 115 11.682'
H-2	- 43 33.195' x 115 09.595'
H-3	- 43 33.118' x 115 90.077'
H-4	- 43 30.650' x 115 10.580'
H-5	- 43 31.957' x 115 09.143'
H-6	- 43 31.677' x 115 08.500'
DP 10	- 43 31.943' x 115 10.763'
DP 20	- 43 31.862' x 115 10.275'
DP 30	- 43 32.553' x 115 10.410'
DP 50	- 43 32.470' x 115 90.226'
DP 60	- 43 30.76' x 115 10.43'
DP 70	- 43 29.651' x 115 9.310'
DP 80	- 43 29.718' x 115 10.283'
DP 90	- 43 28.804' x 115 10.283'
S-1	- 43 32.758' x 115 10.158'



Prepared by: Information Resources Management
 Supervisor's Office
 Boise National Forest
 Boise, Idaho

Produced: 9/21/2020 By: zvanabema
 File: T:\FWS\F\Boise\Program\5100\Fire\GIS\Wildfire\2020\2020Grouse\Products\Ops_Grouse.mxd



The U.S. Department of Agriculture, Forest Service uses the most current and complete data available. GIS data and product accuracy may vary. They may be developed from sources of differing accuracy, accurate only at certain scales, based on modeling or interpretation, incomplete while being revised or created, etc. Using GIS products for purposes other than those for which they were created, may yield inaccurate or misleading results. The Forest Service reserves the right to correct, modify, or replace GIS products without notification.

UTM Zone 11N
 NAD83