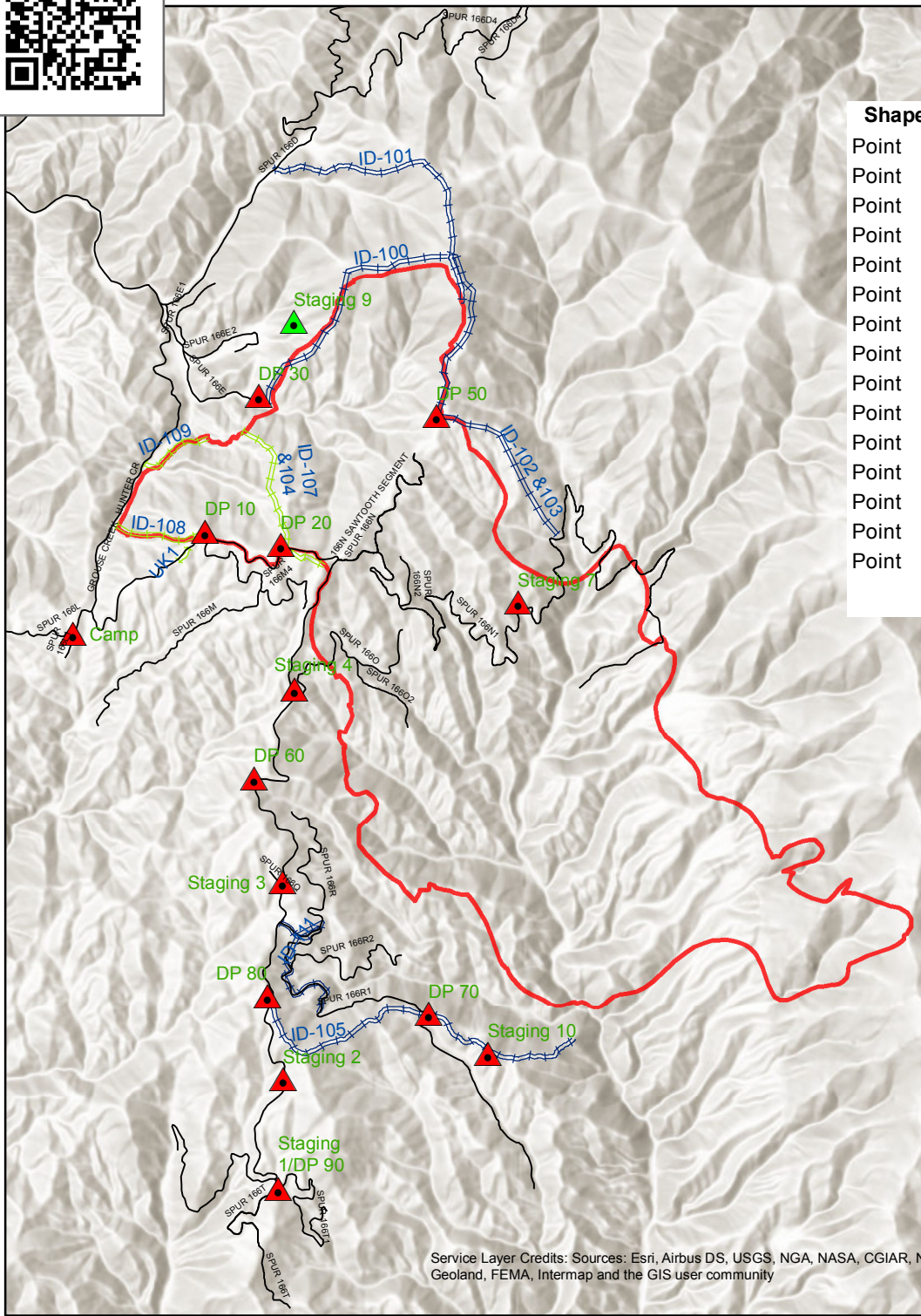




Grouse Fire Rehabilitation Areas



Rehab Points

Shape *	Name	Rehab_Desc	Rehab_type	DIV	Completed
Point	Staging 7	Seed, pull back burms	Excavator	B	N
Point	Staging 4	Full pull back, block access, seed	Excavator	W	N
Point	Staging 3	Full pull back, block access, seed	Excavator	W	N
Point	Staging 2	Full pull back, block access, seed	Excavator	W	N
Point	DP 70	Seed, pull back burms	Excavator	W	N
Point	Staging 10	Full pull back, block access, seed	Excavator	W	N
Point	Staging 1/DP 90	Full pull back, block access, seed	Excavator	W	N
Point	Camp	Removal of all materials	Crew	Camp	N
Point	Staging 9	Pull back, block access, seed	Excavator	A	Y
Point	DP 30	Removal of all materials	Crew	A	N
Point	DP 50	Removal of all materials	Crew	A	N
Point	DP 10	Removal of all materials	Crew	Z	N
Point	DP 20	Removal of all materials	Crew	Z	N
Point	DP 60	Removal of all materials	Crew	W	N
Point	DP 80	Removal of all materials	Crew	W	N

Dozer Line

Shape *	DIV	Comments	Repair_ID	Completed
Polyline	Z	small piece in Zulu	UK1	Y
Polyline	Z	Excavator	ID-108	Y
Polyline	A	Excavator	ID-100	N
Polyline	A	Excavator	ID-101	N
Polyline	B	Excavator	ID-102 & 103	N
Polyline	W	Excavator	ID-105	N
Polyline	Z	Limit trail to 60" width	ID-107 & 104	Y
Polyline	Z	Needs full recontour	ID-109	Y
Polyline	W	DZ push on road	ID-111	N

Legend

- Rehab Points**
- ▲ Not Completed
 - ▲ Completed
- Dozer Line Rehab**
- == Not Completed
 - == Completed
 - Grouse Fire Perimeter

Service Layer Credits: Sources: Esri, Airbus DS, USGS, NGA, NASA, CGIAR, N Robinson, NCEAS, NLS, OS, NMA, Geodatastyrelsen, Rijkswaterstaat, GSA, Geoland, FEMA, Intermap and the GIS user community