


120°29.5'W 120°29'W 120°28.51'W 120°28'W 120°27.5'W 120°27'W 120°26.5'W 120°26'W 120°25.5'W 120°25'W 120°24.5'W

PILOT MAP

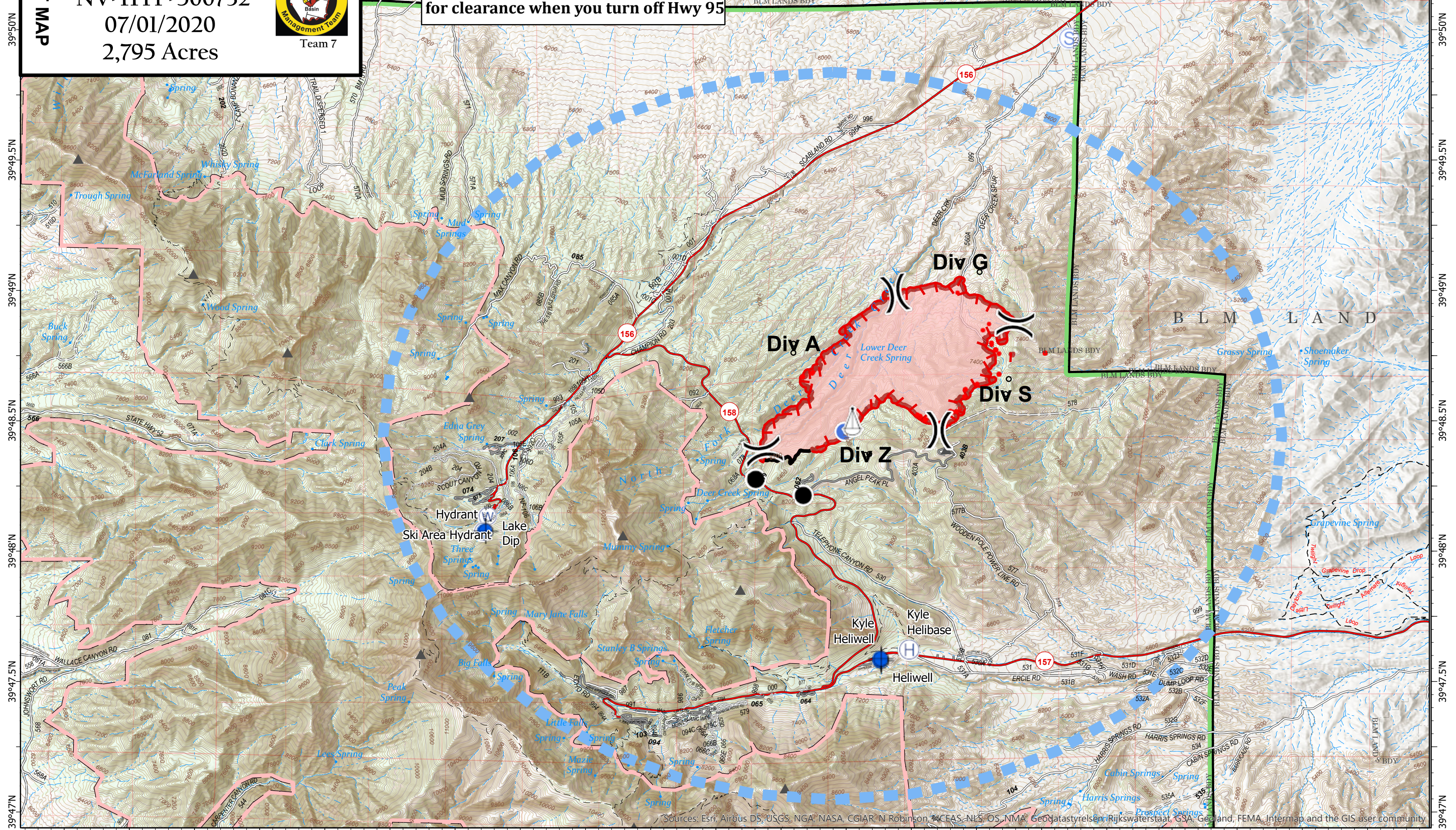
Mahogany

NV-HTF-500732
07/01/2020
2,795 Acres



Team 7

If you are travelling to Desert Rock Helibase, please call #702-295-0311 for clearance when you turn off Hwy 95



Sources: Esri, Airbus DS, USGS, NGA, NASA, CGIAR, Robinson, ACEAS, NLS, OS, NMA, Geodatastyrelsen, Rijkswaterstaat, GSA, Geoland, FEMA, Intermap and the GIS user community

Feature Category	Label	LatWGS84	LongWGS84
Dip Site	Heliwell	36° 16.233' N	115° 35.374' W
Dip Site	Ski Area Pond	36° 18.015' N	115° 40.819' W
Dip Site		36° 16.262' N	115° 35.371' W
Drop Point - SW of perimeter		36° 18.739' N	115° 37.093' W
Drop Point - S of perimeter		36° 18.517' N	115° 36.439' W
Drop Point - NE of perimeter		36° 25.949' N	115° 32.008' W
Helibase		36° 16.391' N	115° 34.980' W
Helipot		36° 19.396' N	115° 35.871' W
Sling Site		36° 19.522' N	115° 35.767' W
Staging Area		36° 24.805' N	115° 32.777' W
Water Source	Ski Area Hydrant	36° 18.226' N	115° 40.784' W
Water Source	Ski Area Pond	36° 18.016' N	115° 40.844' W