

115°35'W 115°34.5'W 115°34'W 115°33.5'W 115°33'W 115°32.5'W 115°32'W

36°23.5'N
36°23'N
36°22.5'N
36°22'N
36°21.5'N
36°21'N
36°20.5'N
36°20'N
36°19.5'N
36°19'N
36°18.5'N


36°23.5'N
36°23'N
36°22.5'N
36°22'N
36°21.5'N
36°21'N
36°20.5'N
36°20'N
36°19.5'N
36°19'N
36°18.5'N

IAP TILES








Mahogany

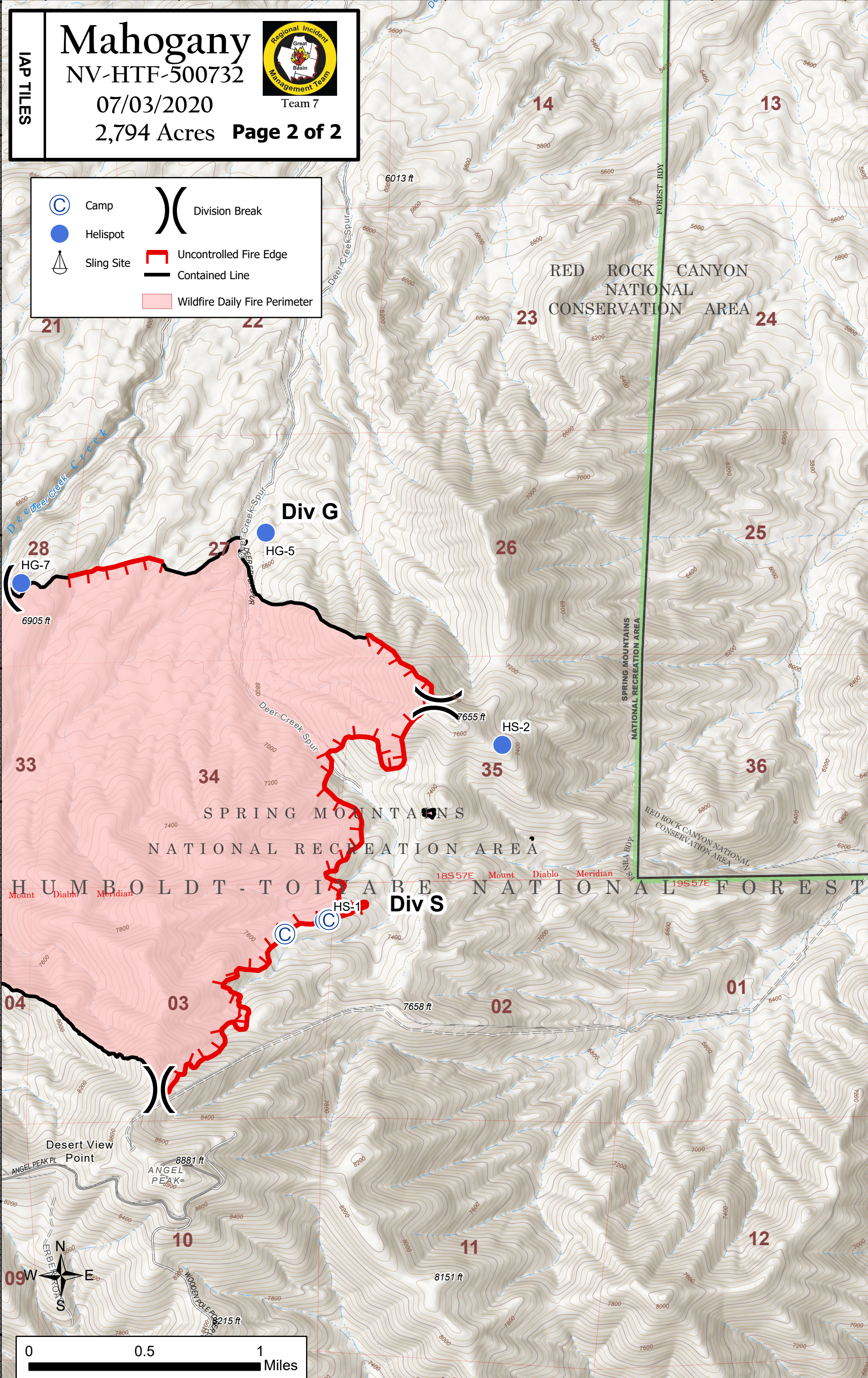
NV-HTF-500732

07/03/2020
2,794 Acres **Page 2 of 2**



Team 7

| | | | |
|---|------------|---|-------------------------------|
|  | Camp |  | Division Break |
|  | Helispot |  | Uncontrolled Fire Edge |
|  | Sling Site |  | Contained Line |
| | |  | Wildfire Daily Fire Perimeter |



Sources: Esri, Airbus DS, USGS, NGA, NASA, CGIAR, N Robinson, NCEAS, NLS, OS, NMA, Geodastyrelsen, Rijkswaterstaat, GSA, Geoland, FEMA, Intermap and the GIS user community, Source: U.S. Census

115°35'W 115°34.5'W 115°34'W 115°33.5'W 115°33'W 115°32.5'W 115°32'W