

115°35'W 115°34.5'W 115°34'W 115°33.5'W 115°33'W 115°32.5'W 115°32'W

36°23.5'N
36°23'N
36°22.5'N
36°22'N
36°21.5'N
36°21'N
36°20.5'N
36°20'N
36°19.5'N
36°19'N
36°18.5'N

36°23.5'N
36°23'N
36°22.5'N
36°22'N
36°21.5'N
36°21'N
36°20.5'N
36°20'N
36°19.5'N
36°19'N
36°18.5'N


IAP TILES

Mahogany






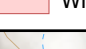
NV-HTF-500732

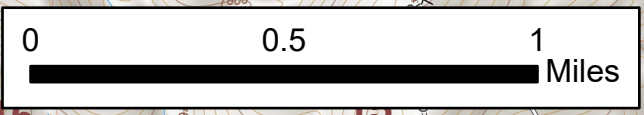
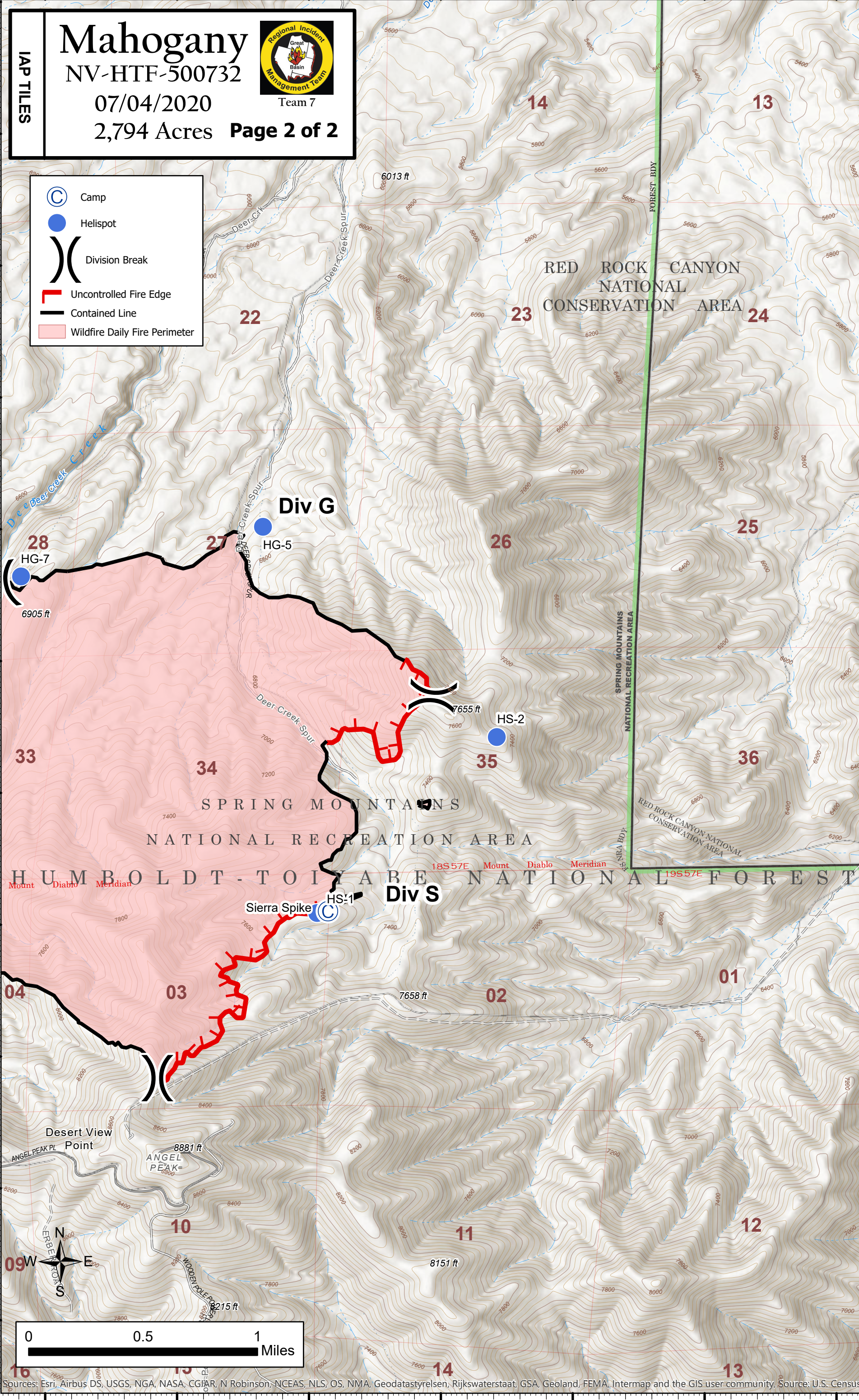
07/04/2020

2,794 Acres **Page 2 of 2**



Team 7

-  Camp
-  Helispot
-  Division Break
-  Uncontrolled Fire Edge
-  Contained Line
-  Wildfire Daily Fire Perimeter



Sources: Esri, Airbus DS, USGS, NGA, NASA, CGIAR, N Robinson, NCEAS, NLS, OS, NMA, Geodastyrelsen, Rijkswaterstaat, GSA, Geoland, FEMA, Intermap and the GIS user community, Source: U.S. Census

115°35'W 115°34.5'W 115°34'W 115°33.5'W 115°33'W 115°32.5'W 115°32'W