


PUBLIC INFORMATION

Mahogany

NV-HTF-500732

07/05/2020

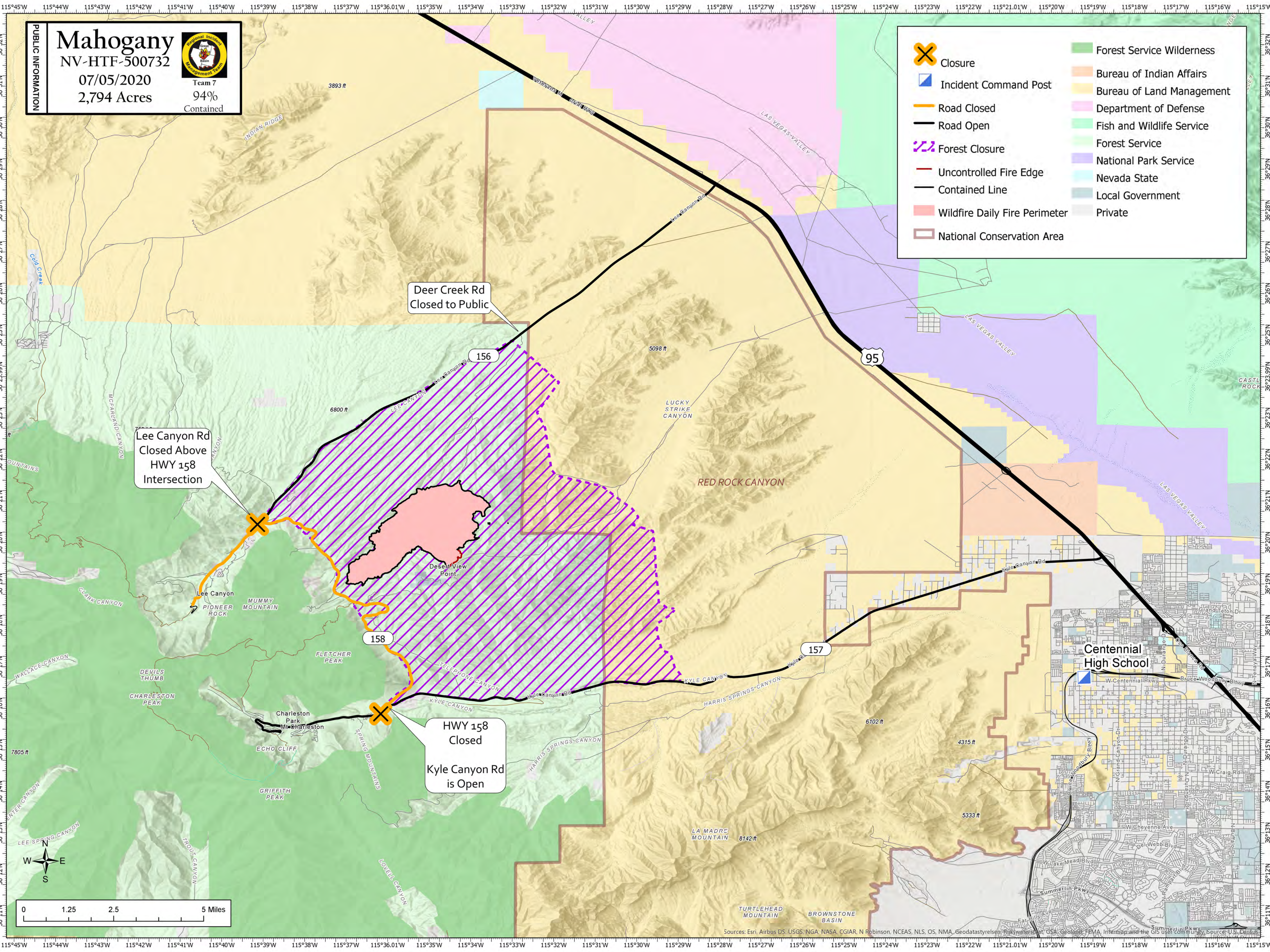
2,794 Acres



Team 7

94% Contained

	Closure		Forest Service Wilderness
	Incident Command Post		Bureau of Indian Affairs
	Road Closed		Bureau of Land Management
	Road Open		Department of Defense
	Forest Closure		Fish and Wildlife Service
	Uncontrolled Fire Edge		Forest Service
	Contained Line		National Park Service
	Wildfire Daily Fire Perimeter		Nevada State
	National Conservation Area		Local Government
			Private



Lee Canyon Rd
Closed Above
HWY 158
Intersection

Deer Creek Rd
Closed to Public

HWY 158
Closed

Kyle Canyon Rd
is Open

Sources: Esri, Airbus DS, USGS, NGA, NASA, CGIAR, N Robinson, NCEAS, NLS, OS, NMA, Geodatastyrelsen, Parksweb.org, GSA, Geologic, FEMA, Intermap and the GIS User Community, Source: U.S. Census