


120°29.5'W 120°29'W 120°28.51'W 120°28'W 120°27.5'W 120°27'W 120°26.5'W 120°26'W 120°25.5'W 120°25'W 120°24.5'W

**PILOT MAP**

# Mahogany

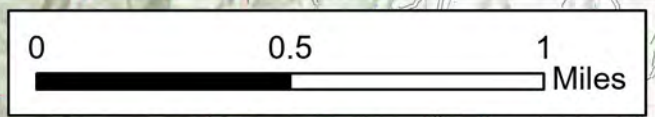
NV-HTF-500732  
07/05/2020  
2,794 Acres



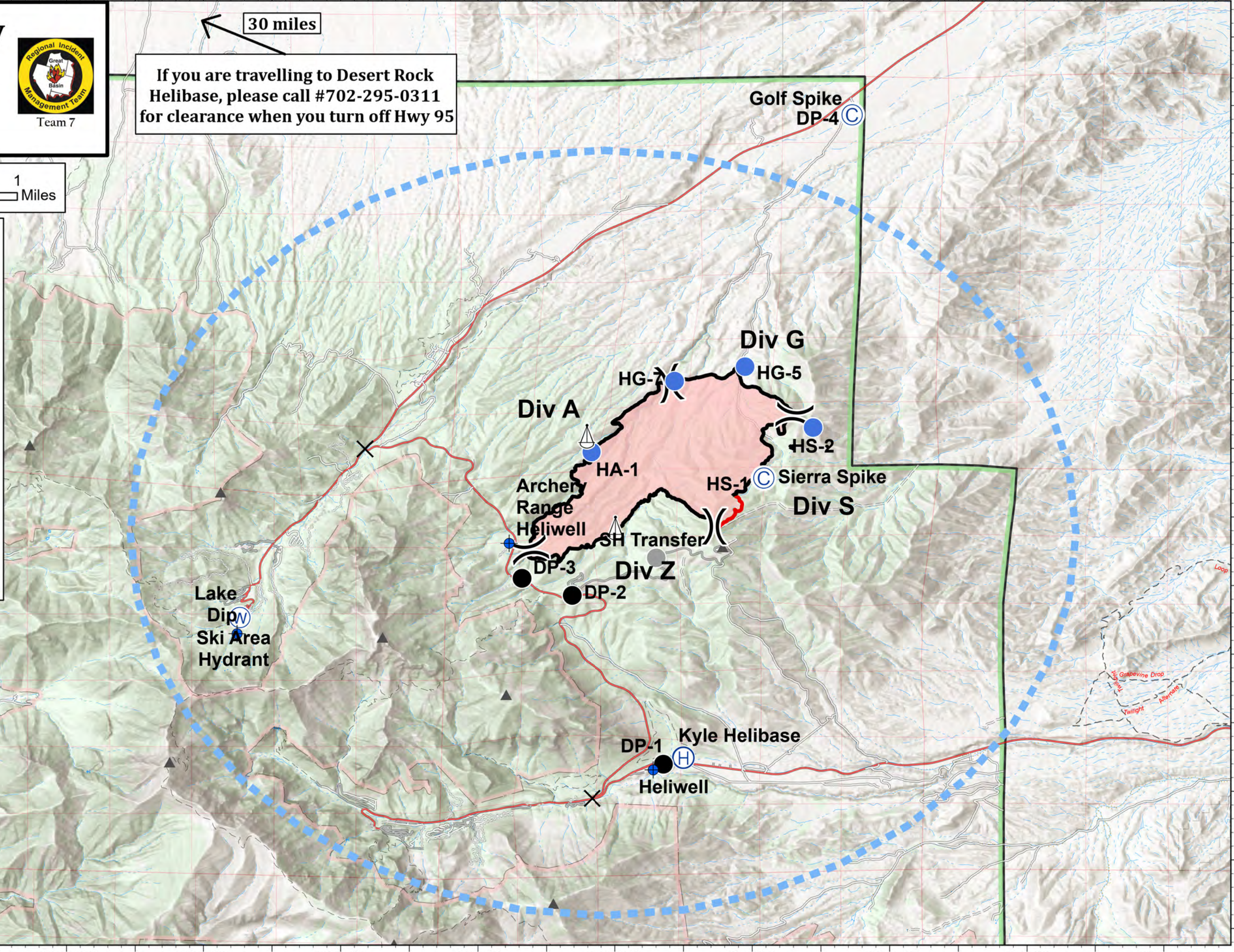
Team 7

30 miles

If you are travelling to Desert Rock Helibase, please call #702-295-0311 for clearance when you turn off Hwy 95



- Ⓒ Camp
- ✕ Closure
- Dip Site
- Drop Point
- Ⓗ Helibase
- Helispot
- ⚓ Sling Site
- ⒲ Water Source
- Other
- ) Division Break
- Contained Line
- Uncontrolled Fire Edge
- ▬ Temporary Flight Restriction



7/4/2020 2151  
WGS 1984 Datum, Lat/Long Grid

120°29.5'W 120°29'W 120°28.51'W 120°28'W 120°27.5'W 120°27'W 120°26.5'W 120°26'W 120°25.5'W 120°25'W 120°24.5'W

| Feature Category | Label                  | LatWGS84      | LongWGS84      |
|------------------|------------------------|---------------|----------------|
| Camp             | Golf Spike             | 36° 24.805' N | 115° 32.777' W |
| Camp             |                        | 36° 20.002' N | 115° 34.103' W |
| Camp             |                        | 36° 20.055' N | 115° 33.938' W |
| Dip Site         | Heliwell               | 36° 16.233' N | 115° 35.374' W |
| Dip Site         | Lake Dip               | 36° 18.015' N | 115° 40.819' W |
| Dip Site         | Archery Range Heliwell | 36° 19.196' N | 115° 37.263' W |
| Drop Point       | DP-Z2                  | 36° 18.739' N | 115° 37.093' W |
| Drop Point       | DP-Z1                  | 36° 18.517' N | 115° 36.439' W |
| Drop Point       | DP-G1                  | 36° 24.829' N | 115° 32.793' W |
| Helibase         | Kyle Helibase          | 36° 16.391' N | 115° 34.980' W |
| Helispot         | HS-1                   | 36° 20.052' N | 115° 33.957' W |
| Helispot         | HA-1                   | 36° 20.393' N | 115° 36.182' W |
| Helispot         | HS-2                   | 36° 20.713' N | 115° 33.286' W |
| Helispot         | HG-5                   | 36° 21.510' N | 115° 34.175' W |
| Helispot         | HG-7                   | 36° 21.321' N | 115° 35.094' W |
| Sling Site       |                        | 36° 20.598' N | 115° 36.248' W |
| Sling Site       |                        | 36° 20.002' N | 115° 34.103' W |
| Sling Site       |                        | 36° 19.396' N | 115° 35.871' W |
| Water Source     | Ski Area Hydrant       | 36° 18.226' N | 115° 40.784' W |