

120°29.5'W 120°29'W 120°28.51'W 120°28'W 120°27.5'W 120°27'W 120°26.5'W 120°26'W 120°25.5'W 120°25'W 120°24.5'W

PILOT MAP

Mahogany

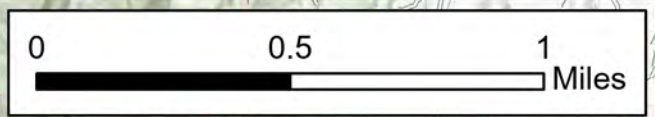
NV-HTF-500732
07/06/2020
2,758 Acres



Team 7

30 miles

If you are travelling to Desert Rock Helibase, please call #702-295-0311 for clearance when you turn off Hwy 95

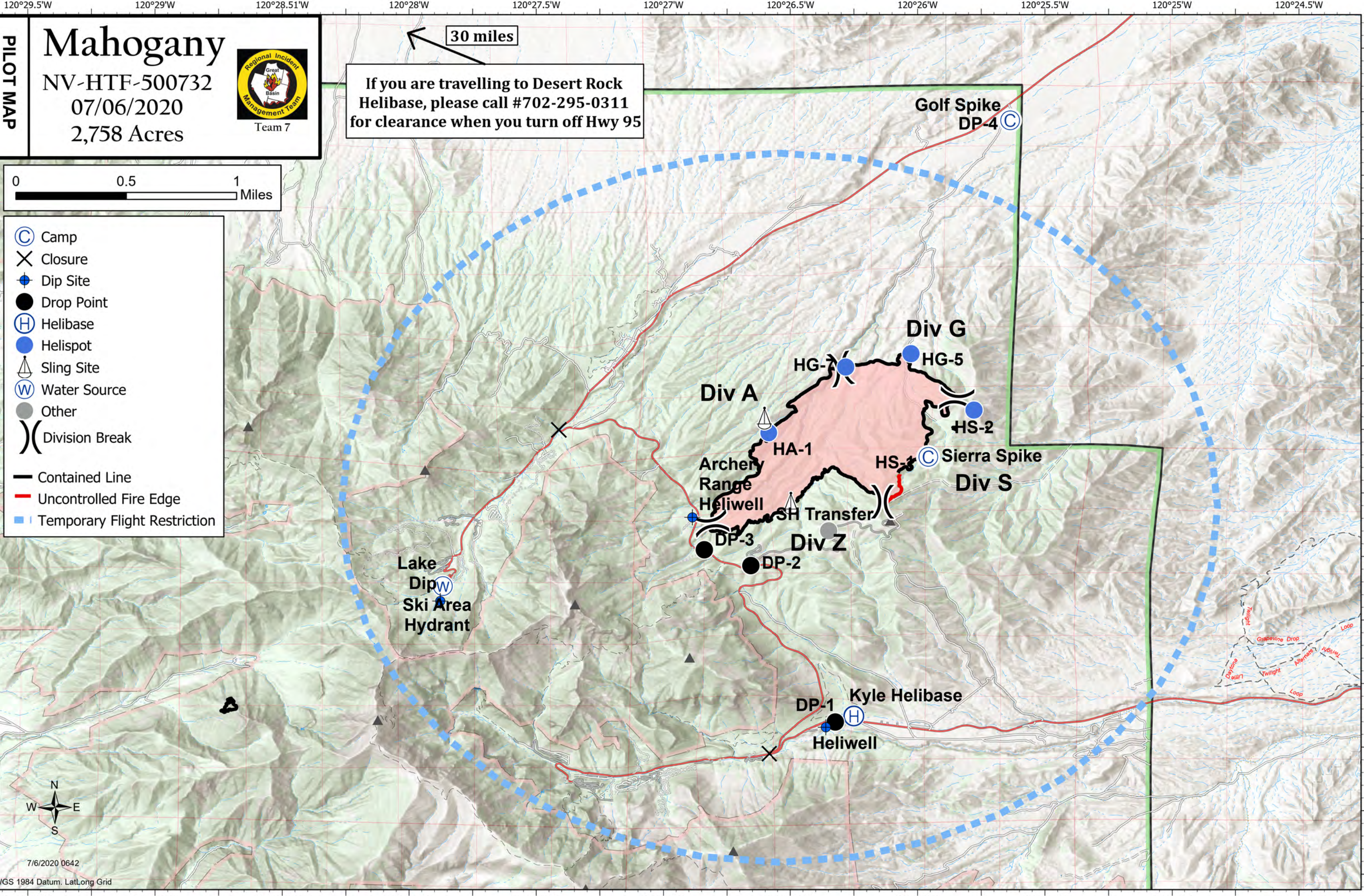


- Ⓒ Camp
- ✕ Closure
- Dip Site
- Drop Point
- Ⓗ Helibase
- Helispot
- ⚙ Sling Site
- ⒲ Water Source
- Other
-) Division Break
- Contained Line
- Uncontrolled Fire Edge
- ⋯ Temporary Flight Restriction



7/6/2020 0642
WGS 1984 Datum, Lat/Long Grid

120°29.5'W 120°29'W 120°28.51'W 120°28'W 120°27.5'W 120°27'W 120°26.5'W 120°26'W 120°25.5'W 120°25'W 120°24.5'W



39°50'N

39°49.5'N

39°49'N

39°48.5'N

39°48'N

39°47.5'N

39°47'N

39°47.5'N

39°48'N

39°48.5'N

39°49'N

39°49.5'N

39°50'N

39°47'N

39°47.5'N

39°50'N

39°49.5'N

39°49'N

39°48.5'N

39°48'N

39°47.5'N

39°47'N

39°47.5'N

39°48'N

39°48.5'N

39°49'N

39°49.5'N

39°50'N

39°47'N

39°47.5'N

Feature Category	Label	LatWGS84	LongWGS84
Camp	Golf Spike	36° 24.805' N	115° 32.777' W
Camp		36° 20.002' N	115° 34.103' W
Camp		36° 20.055' N	115° 33.938' W
Dip Site	Heliwell	36° 16.233' N	115° 35.374' W
Dip Site	Lake Dip	36° 18.015' N	115° 40.819' W
Dip Site	Archery Range Heliwell	36° 19.196' N	115° 37.263' W
Drop Point	DP-Z2	36° 18.739' N	115° 37.093' W
Drop Point	DP-Z1	36° 18.517' N	115° 36.439' W
Drop Point	DP-G1	36° 24.829' N	115° 32.793' W
Helibase	Kyle Helibase	36° 16.391' N	115° 34.980' W
Helispot	HS-1	36° 20.052' N	115° 33.957' W
Helispot	HA-1	36° 20.393' N	115° 36.182' W
Helispot	HS-2	36° 20.713' N	115° 33.286' W
Helispot	HG-5	36° 21.510' N	115° 34.175' W
Helispot	HG-7	36° 21.321' N	115° 35.094' W
Sling Site		36° 20.598' N	115° 36.248' W
Sling Site		36° 20.002' N	115° 34.103' W
Sling Site		36° 19.396' N	115° 35.871' W
Water Source	Ski Area Hydrant	36° 18.226' N	115° 40.784' W