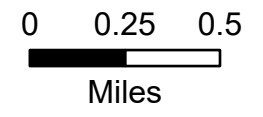
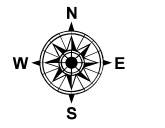


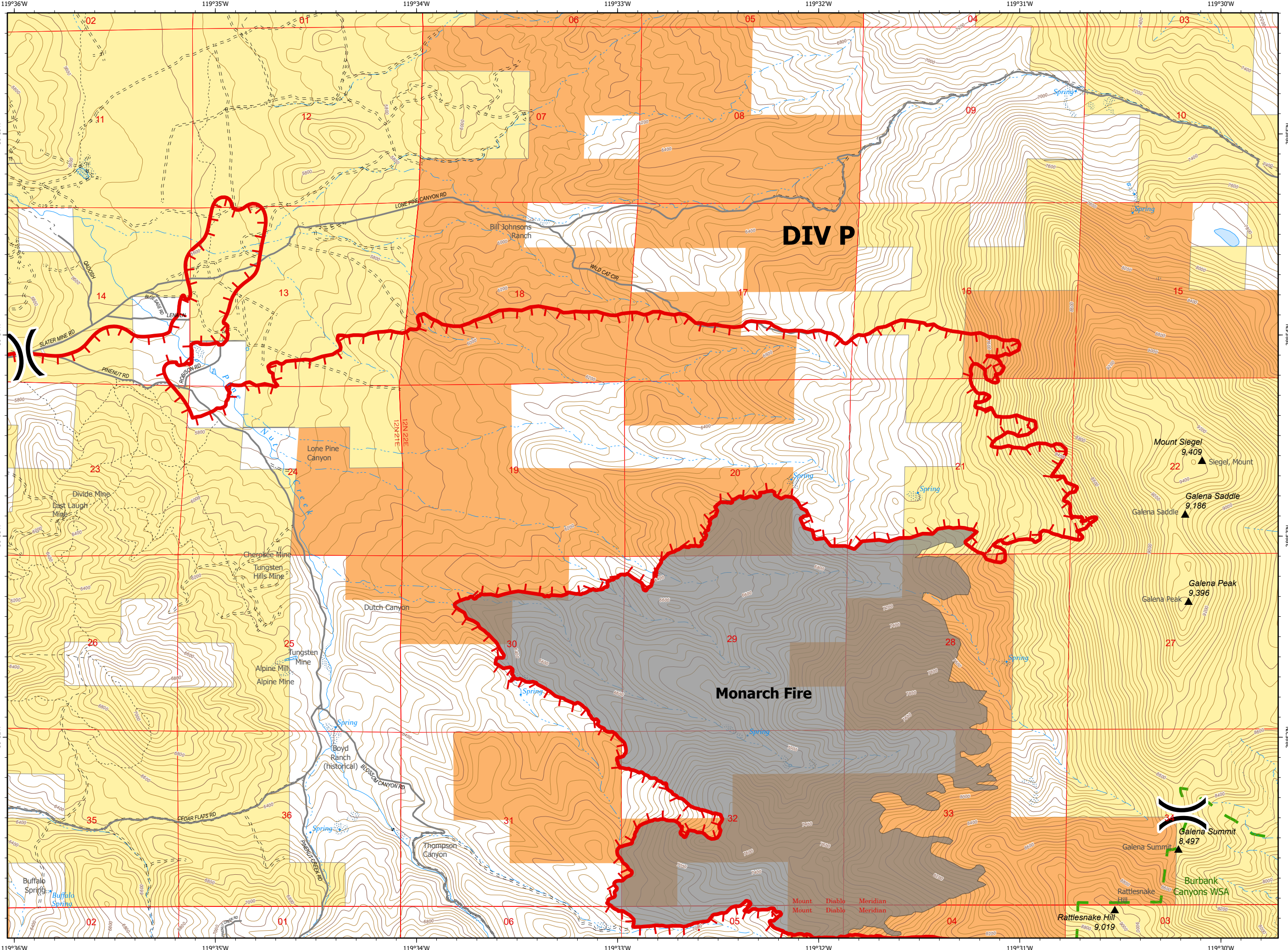
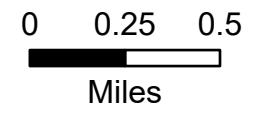
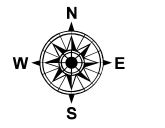
- ▲ Peaks
- BLM
- BIA
- USDA FOREST SERVICE
- BLM Wilderness Study Areas
- Lake / Pond
- Lake / Pond (Intermittent)
- Stream/River; Artificial Path
- Canal / Ditch
- Stream/River Intermittent
- Improved Road
- Other Roads
- 2wd
- 4wd
- ATV
- Motorcycle
- Monarch Fire
- Dip Site
- Drop Point
- Incident Command Post
- ⎸ Division Break
- Uncontrolled Fire Edge



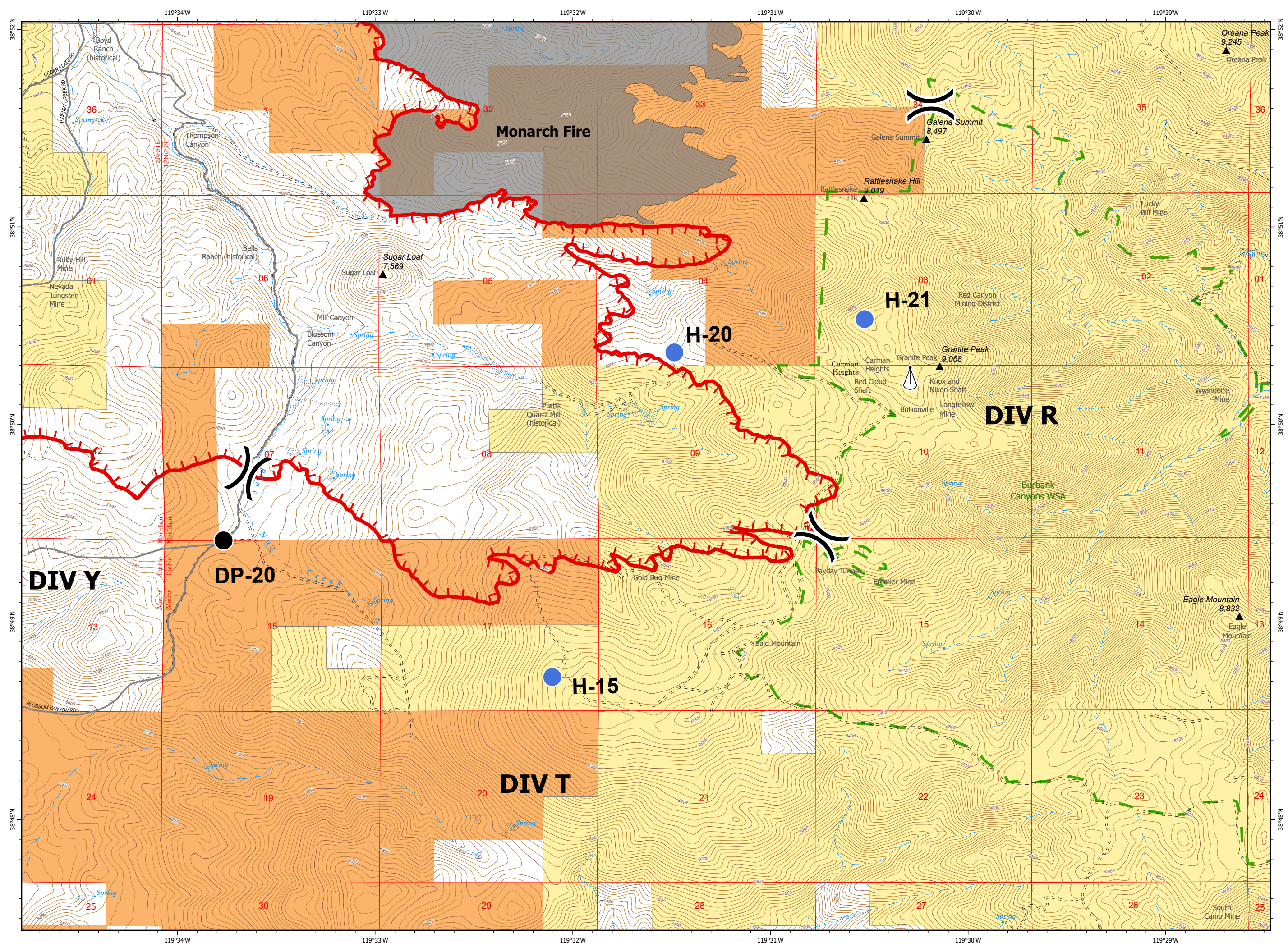
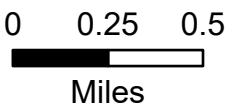
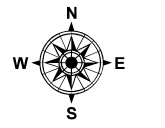
DIV P

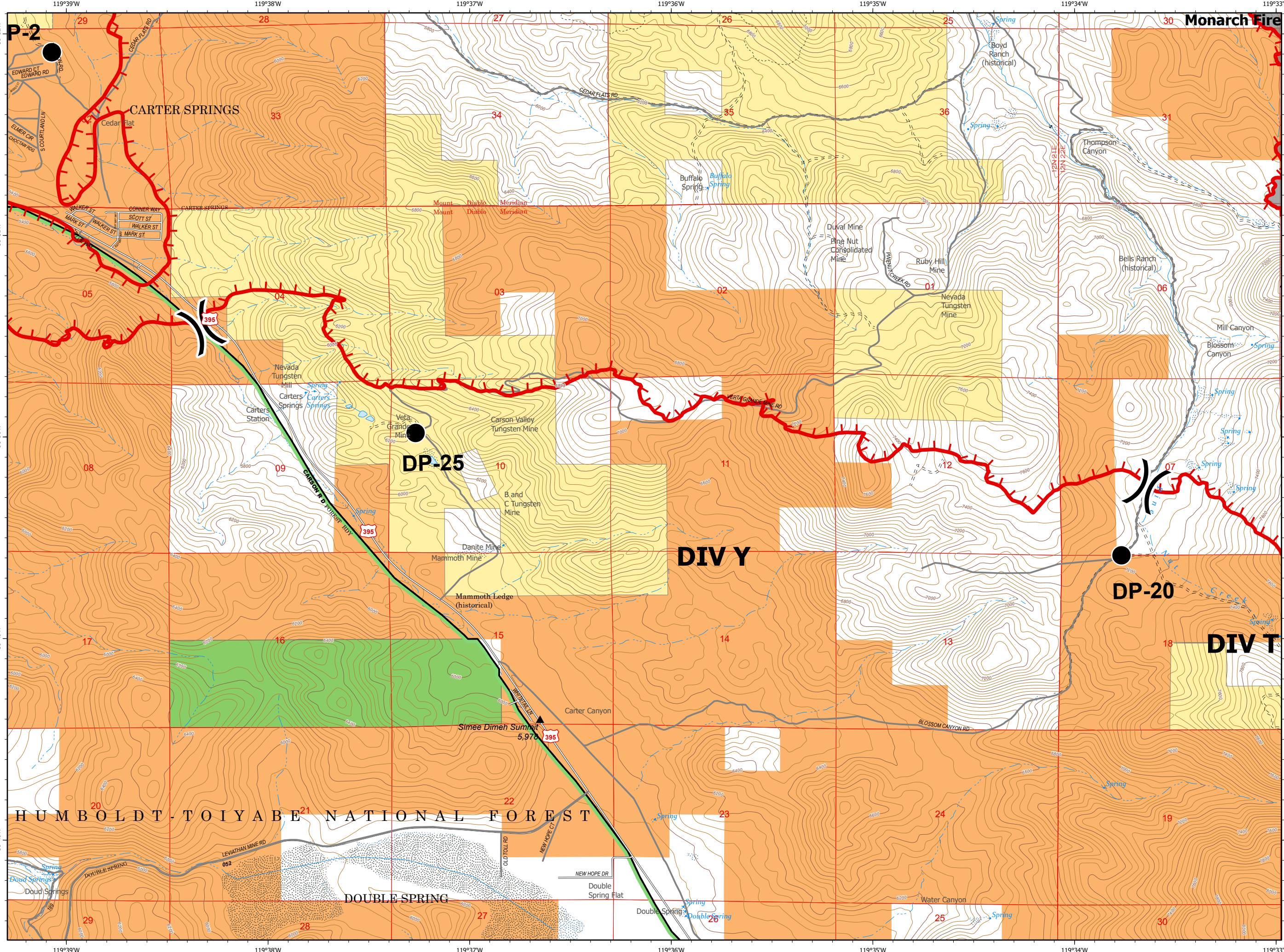
Monarch Fire

- ▲ Peaks
- BLM
- BIA
- BLM Wilderness Study Areas
- Lake / Pond
- Lake / Pond (Intermittent)
- Stream/River; Artificial Path
- Stream/River Intermittent
- Improved Road
- 2wd
- 4wd
- ATV
- Motorcycle
- Monarch Fire
- ⎓ Division Break
- Uncontrolled Fire Edge



- ▲ Peaks
- BLM
- BIA
- BLM Wilderness Study Areas
- Lake / Pond
- Lake / Pond (Intermittent)
- Stream/River; Artificial Path
- - - Stream/River Intermittent
- Improved Road
- 2wd
- 4wd
- - - ATV
- - - Motorcycle
- Monarch Fire
- Drop Point
- Helispot
- ▲ Sling Site
- ⎓ Division Break
- Uncontrolled Fire Edge





- ▲ Peaks
- BLM
- BIA
- USDA FOREST SERVICE
- BLM Wilderness Study Areas
- Lake / Pond
- Playa
- Reservoir
- Stream/River; Artificial Path
- - - Stream/River Intermittent
- Improved Road
- Other Roads
- 2wd
- 4wd
- - - ATV
- - - Motorcycle
- Monarch Fire
- Drop Point
- ⌋ Division Break
- ┌ Uncontrolled Fire Edge

