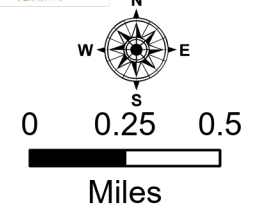
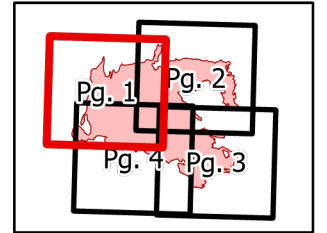
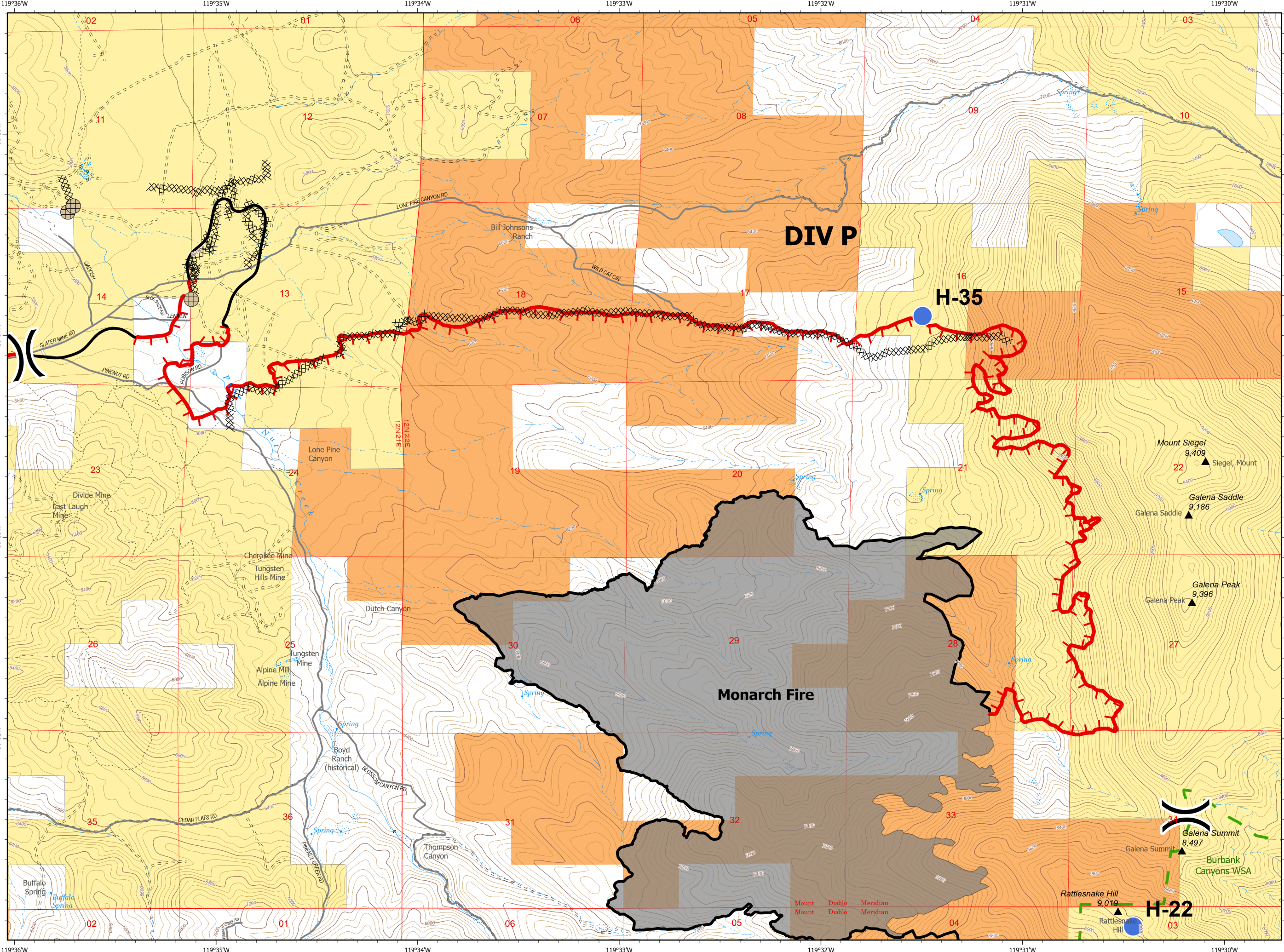
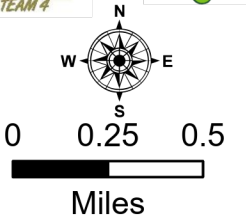
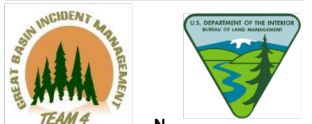
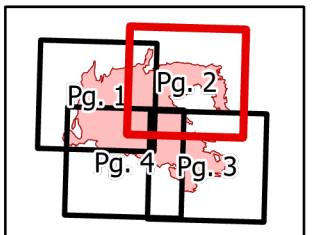


- ▲ Peaks
- BLM
- BIA
- USDA FOREST SERVICE
- BLM Wilderness Study Areas
- Lake / Pond
- Lake / Pond (Intermittent)
- Stream/River; Artificial Path
- Canal / Ditch
- Stream/River Intermittent
- Improved Road
- Other Roads
- 2wd
- 4wd
- ATV
- Motorcycle
- Monarch Fire
- Dip Site
- Drop Point
- Fence - Cut/Damaged
- Incident Command Post
- ⎓ Division Break
- Uncontrolled Fire Edge
- Contained Line
- ⊗ Completed Dozer Line
- ⊕ Completed Hand Line
- Access or Improved Road
- Repair Line

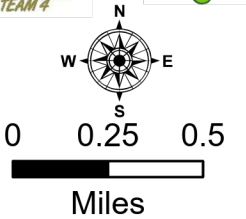
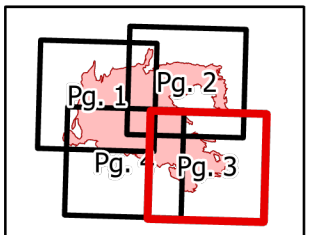


- ▲ Peaks
- BLM
- BIA
- BLM Wilderness Study Areas
- Lake / Pond
- Lake / Pond (Intermittent)
- Stream/River; Artificial Path
- Stream/River Intermittent
- Improved Road
- 2wd
- 4wd
- ATV
- Motorcycle
- Monarch Fire
- ⊕ Fence - Cut/Damaged
- Helispot
-) Division Break
- ▬ Uncontrolled Fire Edge
- ▬ Contained Line
- ⊗ Completed Dozer Line

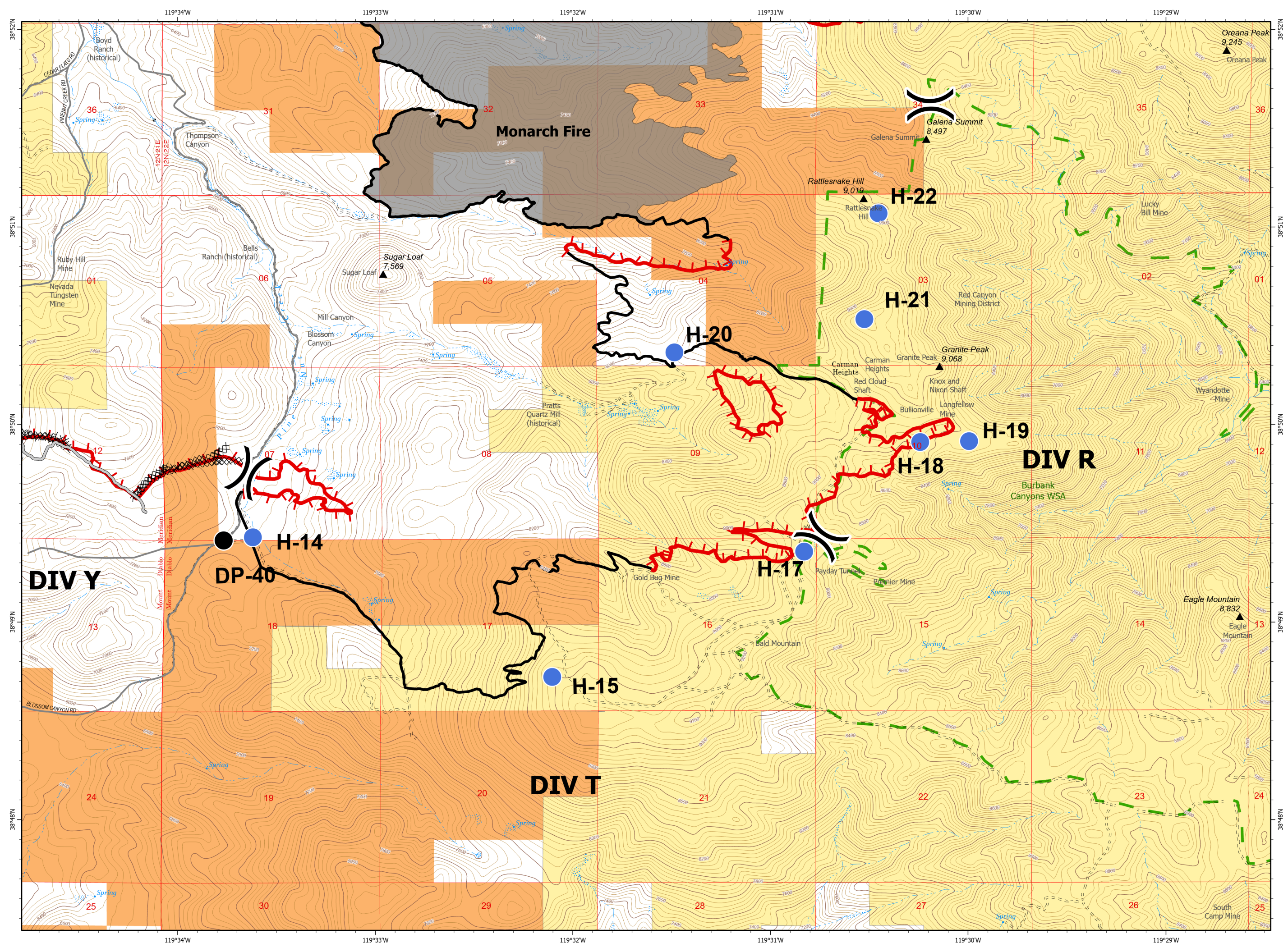


Numbers Fire
 NV-CCD-30406
 7/11/2020
 Day Shift
 18,300 Acres
 IAP

- ▲ Peaks
- BLM
- BIA
- BLM Wilderness Study Areas
- Lake / Pond
- Lake / Pond (Intermittent)
- Stream/River; Artificial Path
- Stream/River Intermittent
- Improved Road
- 2wd
- 4wd
- ATV
- Motorcycle
- Monarch Fire
- Drop Point
- Helispot
-) Division Break
- Uncontrolled Fire Edge
- Contained Line
- ⊗ Completed Dozer Line
- Access or Improved Road



Author: Matt Dickinson
 Perimeter as of 7/9/2020 @ 2130 hrs.
 Current Time: 7/10/2020 9:24 PM



- ▲ Peaks
- BLM
- BIA
- USDA FOREST SERVICE
- BLM Wilderness Study Areas
- Lake / Pond
- Playa
- Reservoir
- Stream/River; Artificial Path
- Stream/River Intermittent
- Improved Road
- Other Roads
- 2wd
- 4wd
- ATV
- Motorcycle
- Monarch Fire
- Drop Point
- Helispot
- ⎓ Division Break
- Uncontrolled Fire Edge
- Contained Line
- ⊗ Completed Dozer Line
- H Completed Hand Line
- Access or Improved Road
- Repair Line

