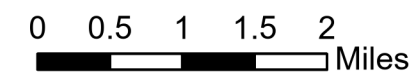
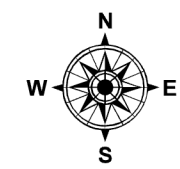
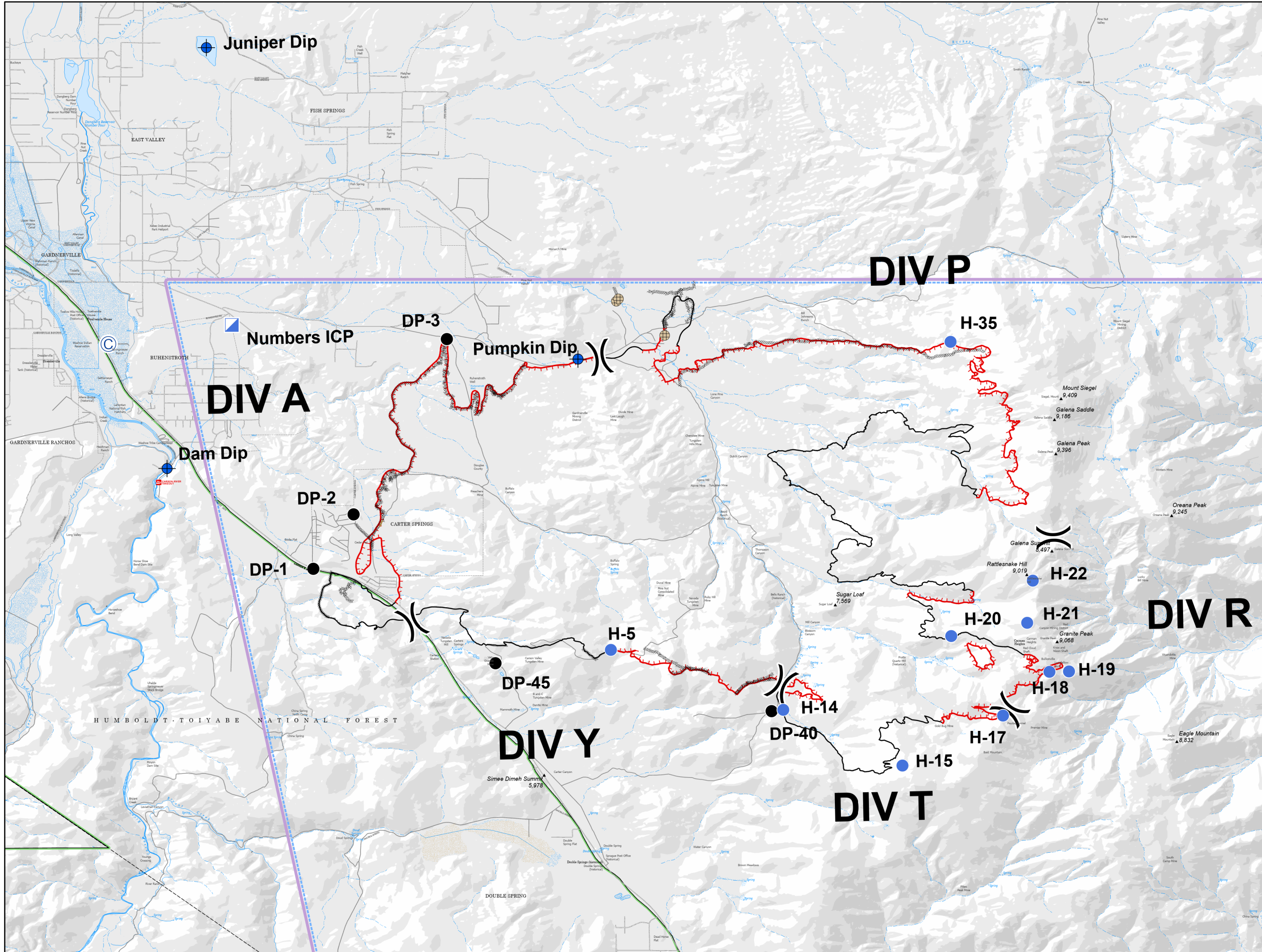


Numbers Fire
 NV-CCD-30406
 7/11/2020
 Day Shift
 18,300 Acres
 PILOTS

- ⊙ Camp
- ⊕ Dip Site
- Drop Point
- ⊕ Fence - Cut/Damaged
- Helispot
- ▣ Incident Command Post
-) (Division Break
- ▬ Uncontrolled Fire Edge
- ▬ Contained Line
- ⊗ Completed Dozer Line
- H Completed Hand Line
- Repair Line
- TFR
- 0/7483



Author: Matt Dickinson
 Perimeter as of 7/9/2020 @ 2130 hrs.
 Current Time: 7/10/2020 9:52 PM

FeatureCategory	Label	Comments	LatWGS84_DDM	LongWGS84_DDM
Incident Command Post	Numbers ICP		38° 54.40458563' N	119° 40.31517369' W
Camp	Crew Camp		38° 54.07240800' N	119° 42.18135601' W
Dip Site	Dam Dip	Type 1 and 2 Helicopters	38° 52.49068946' N	119° 41.43747198' W
Dip Site	Juniper Dip	Good for Type 1 and 2 helicopters	38° 57.83174828' N	119° 40.94085755' W
Dip Site	Pumpkin Dip	Dusty no Type 1	38° 53.88059163' N	119° 36.22332879' W
Drop Point	DP-1		38° 51.21931459' N	119° 39.58377475' W
Drop Point	DP-2		38° 51.90931466' N	119° 39.07277475' W
Drop Point	DP-3		38° 53.41931493' N	119° 37.36977465' W
Drop Point	DP-40		38° 49.41331488' N	119° 33.76777355' W
Drop Point	DP-45		38° 50.02031466' N	119° 37.26877424' W
Helispot	H-5	6900' elevation, shale and short grass, on the ridge next to two track, two way, flagged and improved, slightly dusty but ok, approved type for 2&3	38° 50.19112526' N	119° 35.80503304' W
Helispot	H-14	Good for Type 2 helicopter	38° 49.42933301' N	119° 33.62032082' W
Helispot	H 15	9000' elevation, shale and short sage, two way, top of the knob, approved type 2&3	38° 48.72233672' N	119° 32.10446466' W
Helispot	H-17	On a ridge good for Type 2. A little dusty.	38° 49.35720320' N	119° 30.83059143' W
Helispot	H-18	8800' elevation, sage and dg, no dust, surrounded by 10-20' brush, approved for type 3 only	38° 49.91147227' N	119° 30.24198735' W
Helispot	H-19	8800' elevation, short sage, two way, no dust, approved type 2&3	38° 49.91644609' N	119° 29.99524755' W
Helispot	H 20	8200' elevation, two way, short bushes, small snags in area, approved type 3&2, flagged	38° 50.36527690' N	119° 31.48677033' W
Helispot	H 21	9200' elevation, granite, no dust, two way on ridgetop, approved type 2 & 3	38° 50.53361230' N	119° 30.52425293' W
Helispot	H 22	Approved Type 2 & 3, shale, no dust, 9000' elevation, little rocky, two way on ridgetop, flagged	38° 51.06921844' N	119° 30.45235635' W
Helispot	H 35	7100' elevation, two way with short trees on approach and departure, grass meadow, base of the slope. Approved type 2&3	38° 54.09814238' N	119° 31.49507852' W