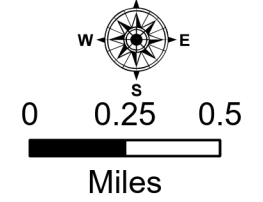
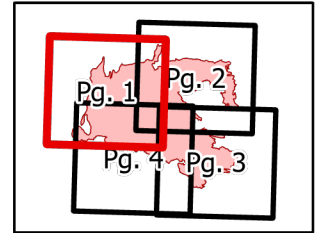
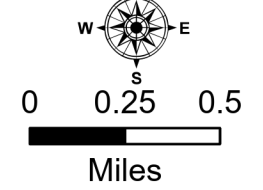
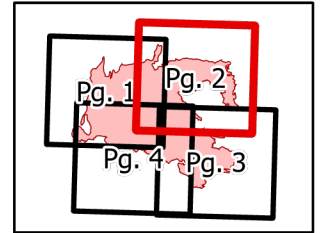
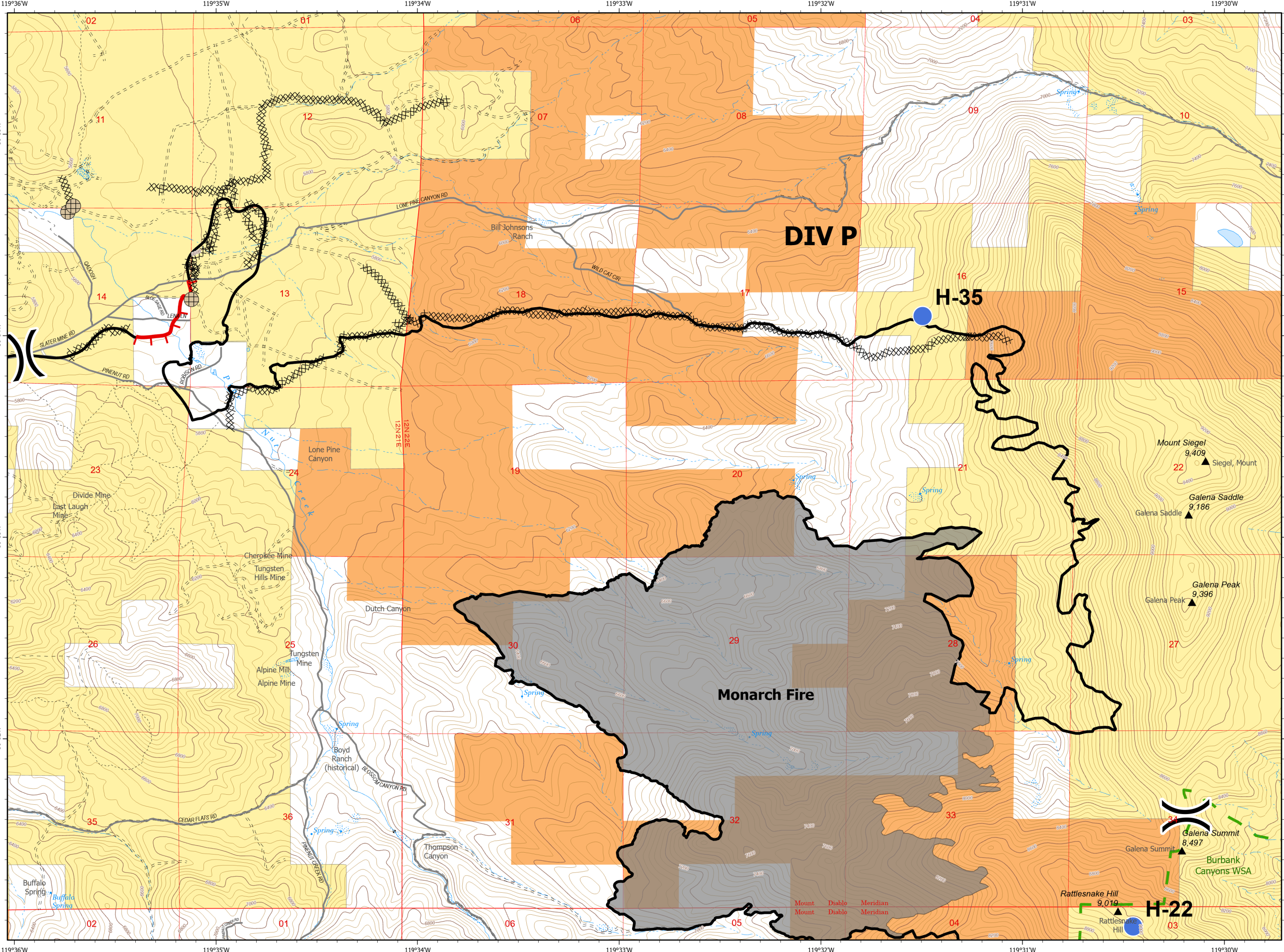


- ▲ Peaks
- BLM
- BIA
- USDA FOREST SERVICE
- BLM Wilderness Study Areas
- Lake / Pond
- Lake / Pond (Intermittent)
- Stream/River; Artificial Path
- Canal / Ditch
- Stream/River Intermittent
- Improved Road
- Other Roads
- 2wd
- 4wd
- ATV
- Motorcycle
- Monarch Fire
- Dip Site
- Drop Point
- Fence - Cut/Damaged
- Incident Command Post
- ) Division Break
- Uncontrolled Fire Edge
- Contained Line
- XX Completed Dozer Line
- H Completed Hand Line
- Repair Line



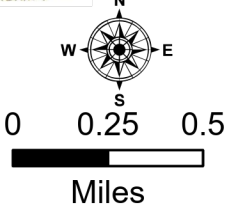
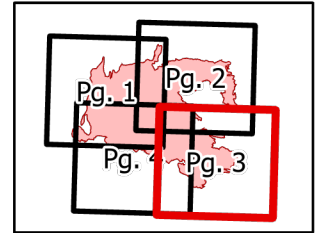
**Numbers Fire**  
 NV-CCD-30406  
 7/12/2020  
 Day Shift  
 18,342 Acres  
 IAP

- ▲ Peaks
- BLM
- BIA
- BLM Wilderness Study Areas
- Lake / Pond
- Lake / Pond (Intermittent)
- Stream/River; Artificial Path
- Stream/River Intermittent
- Improved Road
- 2wd
- 4wd
- ATV
- Motorcycle
- Monarch Fire
- ⊕ Fence - Cut/Damaged
- Helispot
- ) Division Break
- Uncontrolled Fire Edge
- Contained Line
- ⊗ Completed Dozer Line

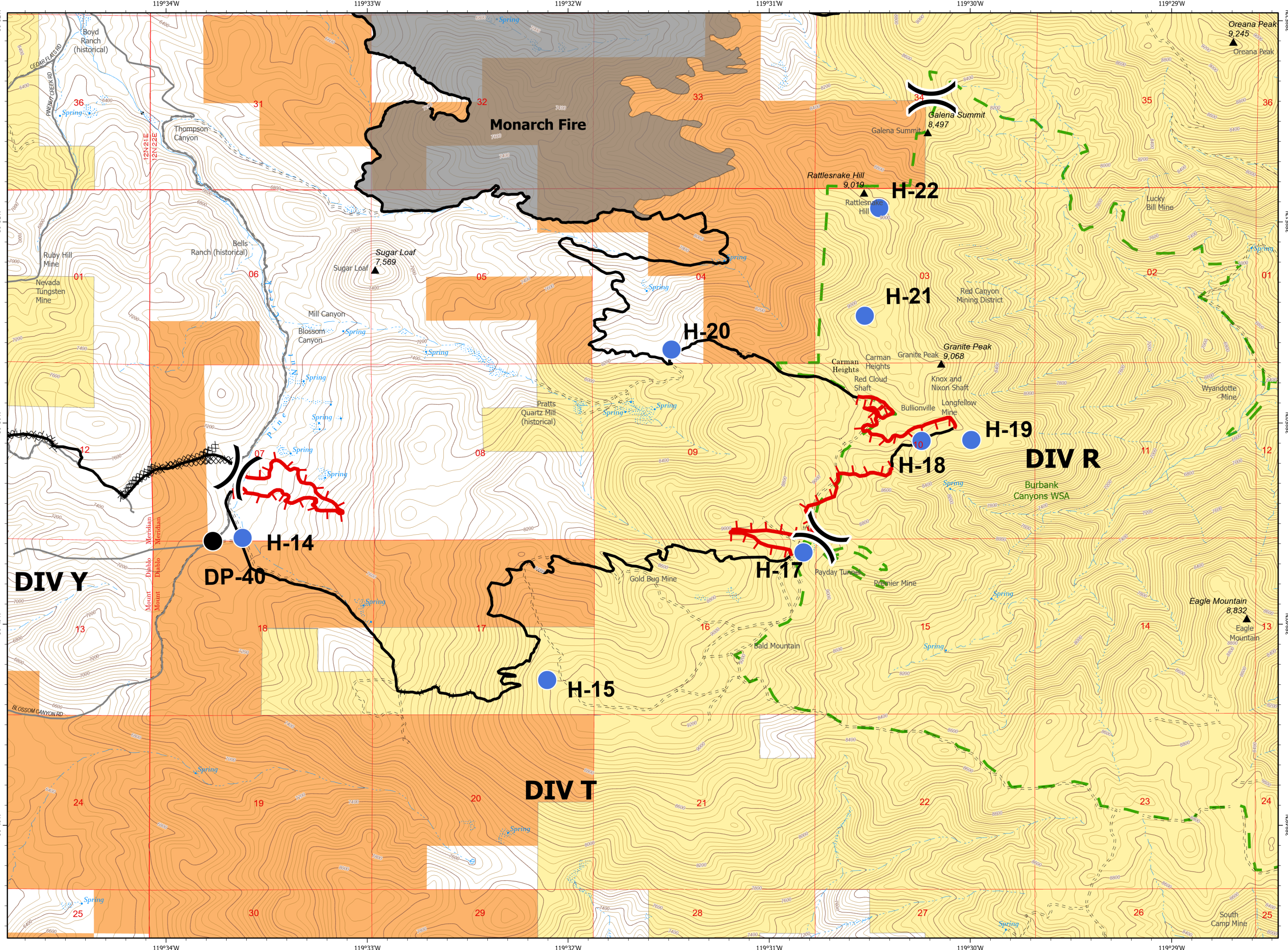


**Numbers Fire**  
 NV-CCD-30406  
 7/12/2020  
 Day Shift  
 18,342 Acres  
 IAP

- ▲ Peaks
- BLM
- BIA
- BLM Wilderness Study Areas
- Lake / Pond
- Lake / Pond (Intermittent)
- Stream/River; Artificial Path
- - - Stream/River Intermittent
- Improved Road
- 2wd
- - - 4wd
- - - ATV
- - - Motorcycle
- Monarch Fire
- Drop Point
- Helispot
- ) Division Break
- Uncontrolled Fire Edge
- Contained Line
- ⊗ Completed Dozer Line
- H Completed Hand Line



Author: Matt Dickinson  
 Perimeter as of 7/11/2020 @ 1500 hrs.  
 Current Time: 7/11/2020 10:06 PM



- ▲ Peaks
- BLM
- BIA
- USDA FOREST SERVICE
- BLM Wilderness Study Areas
- Lake / Pond
- Playa
- Reservoir
- Stream/River; Artificial Path
- Stream/River Intermittent
- Improved Road
- Other Roads
- 2wd
- 4wd
- ATV
- Motorcycle
- Monarch Fire
- Drop Point
- Helispot
- ) Division Break
- Uncontrolled Fire Edge
- Contained Line
- ⊗ Completed Dozer Line
- H Completed Hand Line
- Repair Line

