

114°50'W

114°49'W

43°30'N

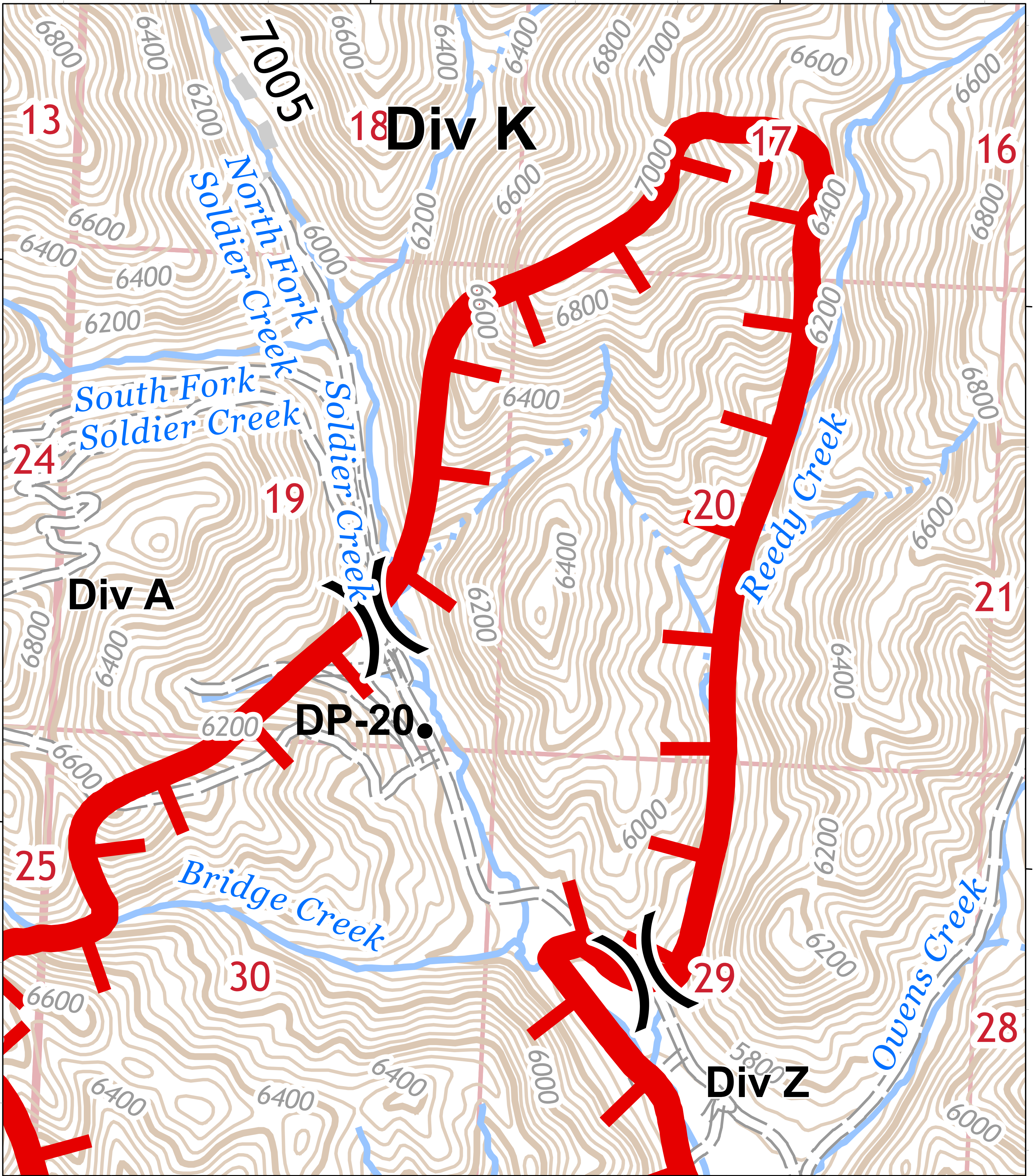
43°30'N

43°29'N

43°29'N

114°50'W

114°49'W



**Operations**

**DIV K**

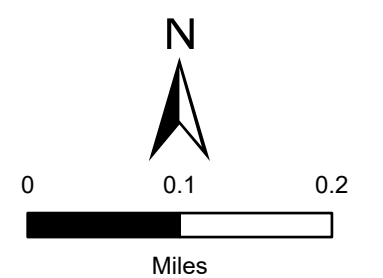
Philips Creek  
ID-STF-00225

10 Aug 2020

2,121 acres  
as of 08/08/2020, 1800 Hrs



- Drop Point
- Helispot
- ⚠ Value at Risk
- ) Division Break
- ┌─┐ Uncontrolled Fire Edge



UTM 11N, NAD83  
sdkovach  
8/9/2020, 2231 hrs  
ops\_2020\_PhilipsCreek\_IDSTF00225