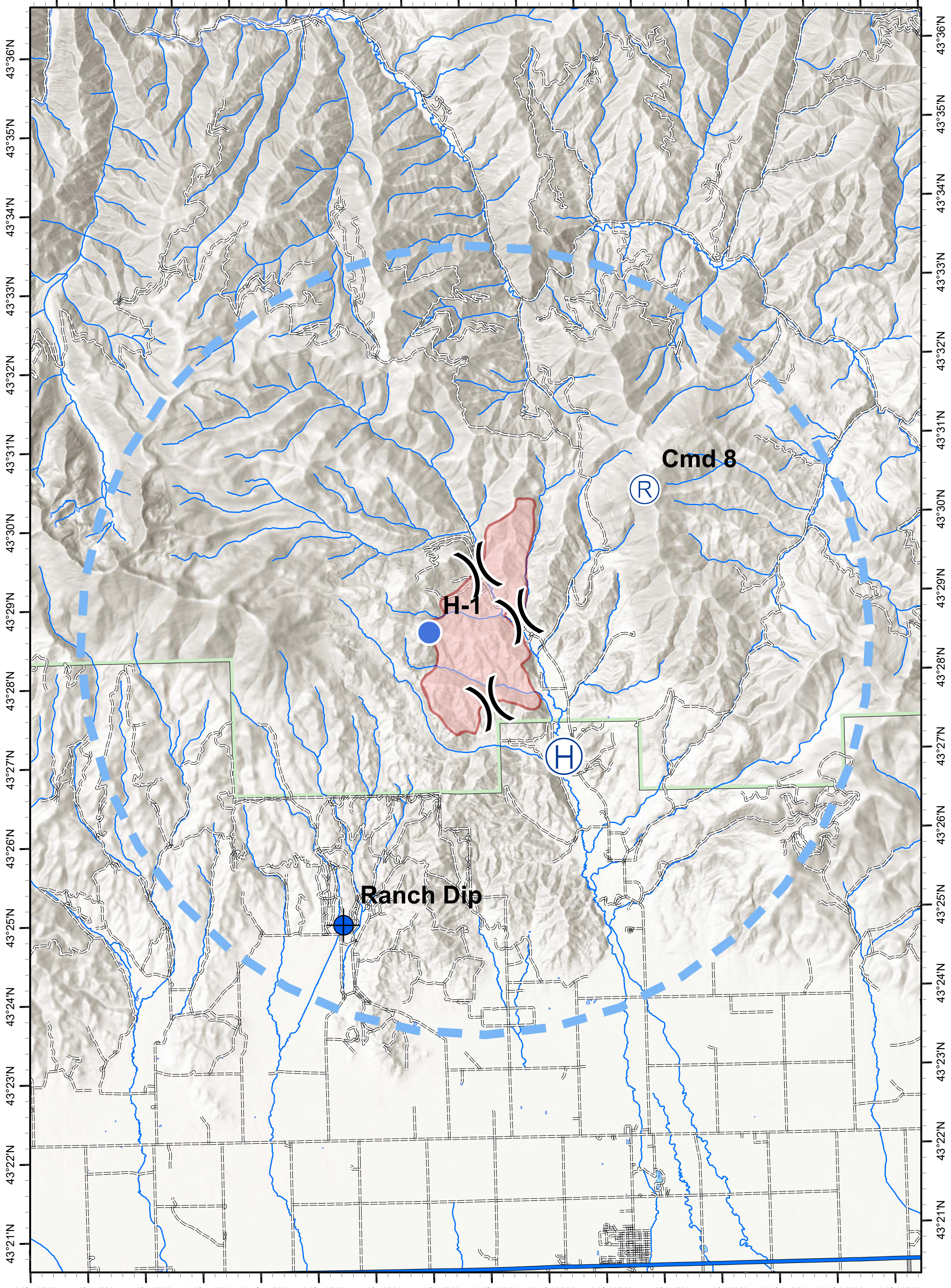


114°57'W 114°56'W 114°55'W 114°54'W 114°53'W 114°52'W 114°51'W 114°50'W 114°49'W 114°48'W 114°47'W 114°46'W 114°45'W 114°44'W 114°43'W 114°42'W

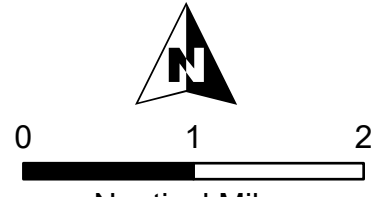


114°58'W 114°57'W 114°56'W 114°55'W 114°54'W 114°53'W 114°52'W 114°51'W 114°50'W 114°49'W 114°48'W 114°47'W 114°46'W 114°45'W 114°44'W 114°43'W

Air Operations
 Phillips Creek
 ID-STF-00225
 10 Aug 20
 2,112 acres
 as of 08/09/20, 2140 Hrs



- Dip Site
- Helibase
- Helispot
- Repeater
- Division Break
- Temporary Flight Restriction
- Wildfire Daily Fire Perimeter
- Highway
- Local connector
- Local or 4WD road
- Perennial Stream
- Lake
- Forest Service



NAD 1983 UTM Zone 11N
 sdkovach
 8/10/2020, 1843 hrs
 airops_2020_PhillipsCreek_IDSTF00225