

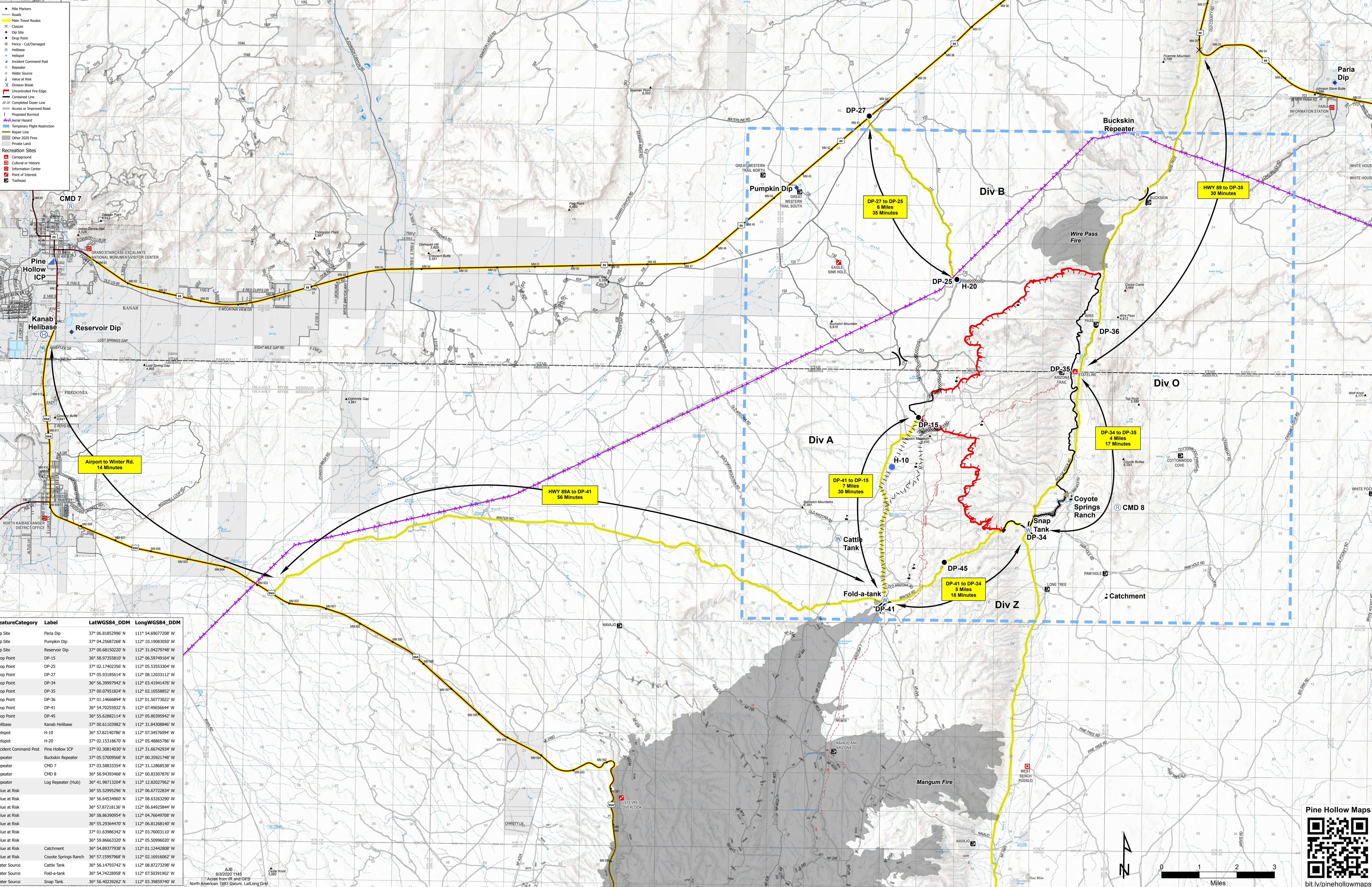


COMMUNICATIONS GROUND SUPPORT

Pine Hollow
AZ-ASD-000595
8/3 Day Shift
11,373 acres at 8/2 2245 hr

ALL MILEAGES AND TIMES ARE APPROXIMATE.

- Mile Markers
- Roads
- Main Travel Routes
- Closure
- Dip Site
- Drop Point
- Fence - Cut/Damaged
- Helibase
- Helispot
- Incident Command Post
- Repeater
- Water Source
- Value at Risk
- Division Break
- Uncontrolled Fire Edge
- Controlled Line
- Completed Burn Line
- Access or Improved Road
- Proposed Burnout
- Aerial Hazard
- Temporary Flight Restriction
- Repair Line
- Other 2020 Fires
- Private Land
- Recreation Sites
- Campground
- Cultural or Historic Information Center
- Point of Interest
- Tailhead



FeatureCategory	Label	LatWGS84_DDM	LongWGS84_DDM
Dip Site	Paria Dip	37° 06.81852996' N	111° 54.69077208' W
Dip Site	Pumpkin Dip	37° 04.25687268' N	112° 10.19083050' W
Dip Site	Reservoir Dip	37° 00.68150207' N	112° 31.04279748' W
Drop Point	DP-15	36° 58.97355810' N	112° 06.59749164' W
Drop Point	DP-25	37° 02.17402356' N	112° 05.53533094' W
Drop Point	DP-27	37° 05.93185614' N	112° 08.12033112' W
Drop Point	DP-34	36° 56.39997942' N	112° 03.41941476' W
Drop Point	DP-35	37° 00.07951824' N	112° 02.10558852' W
Drop Point	DP-36	37° 01.14666894' N	112° 01.50773022' W
Drop Point	DP-41	36° 54.70255932' N	112° 07.49656644' W
Drop Point	DP-45	36° 55.62882114' N	112° 05.80399542' W
Helibase	Kanab Helibase	37° 00.61103962' N	112° 31.84308846' W
Helispot	H-10	36° 57.82140786' N	112° 07.34576094' W
Helispot	H-20	37° 02.15318670' N	112° 05.48865786' W
Incident Command Post	Pine Hollow ICP	37° 02.30814030' N	112° 31.66742534' W
Repeater	Buckskin Repeater	37° 05.57005568' N	112° 00.35921748' W
Repeater	CMD 7	37° 01.12868538' N	112° 31.12868538' W
Repeater	CMD 8	36° 56.94393468' N	112° 00.83307876' W
Repeater	Log Repeater (Hub)	36° 41.9871204' N	112° 12.82027962' W
Value at Risk	Value at Risk	36° 55.5295290' N	112° 06.6772834' W
Value at Risk	Value at Risk	36° 56.4534960' N	112° 08.63263290' W
Value at Risk	Value at Risk	36° 57.87218136' N	112° 06.64925844' W
Value at Risk	Value at Risk	36° 58.86390954' N	112° 04.76649708' W
Value at Risk	Value at Risk	36° 55.29364470' N	112° 06.81288140' W
Value at Risk	Value at Risk	37° 01.63986320' N	112° 03.76003110' W
Value at Risk	Value at Risk	36° 59.8666320' N	112° 05.50996020' W
Value at Risk	Catchment	36° 54.89377938' N	112° 01.12442808' W
Value at Risk	Coyote Springs Ranch	36° 57.15997968' N	112° 02.16916062' W
Water Source	Cattle Tank	36° 56.14793742' N	112° 08.8773298' W
Water Source	Fold-a-tank	36° 54.74228958' N	112° 07.50391902' W
Water Source	Snap Tank	36° 56.40239262' N	112° 03.39859740' W

8/3/2020 11:45
Aces from IR and GPS
North American 1983 Datum, Lat-long Grid

