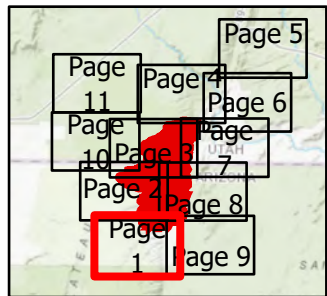
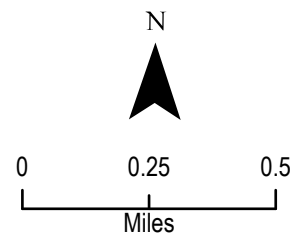


**IAP Map**  
Pine Hollow Fire  
AZ-ASD-000595  
8/3/20 Day  
Appx 11,275 acres  
at 8/1/2020 2200hrs

Page 1



- Drop Point
- ⊕ Water Source
- ▲ Value at Risk
- ) ( Division Break
- Uncontrolled Fire Edge
- Contained Line
- XX XX Completed Dozer Line
- | Proposed Burnout
- Temporary Flight Restriction
- Wildfire Daily Fire Perimeter



Pine Hollow Maps



bit.ly/pinehollowmaps

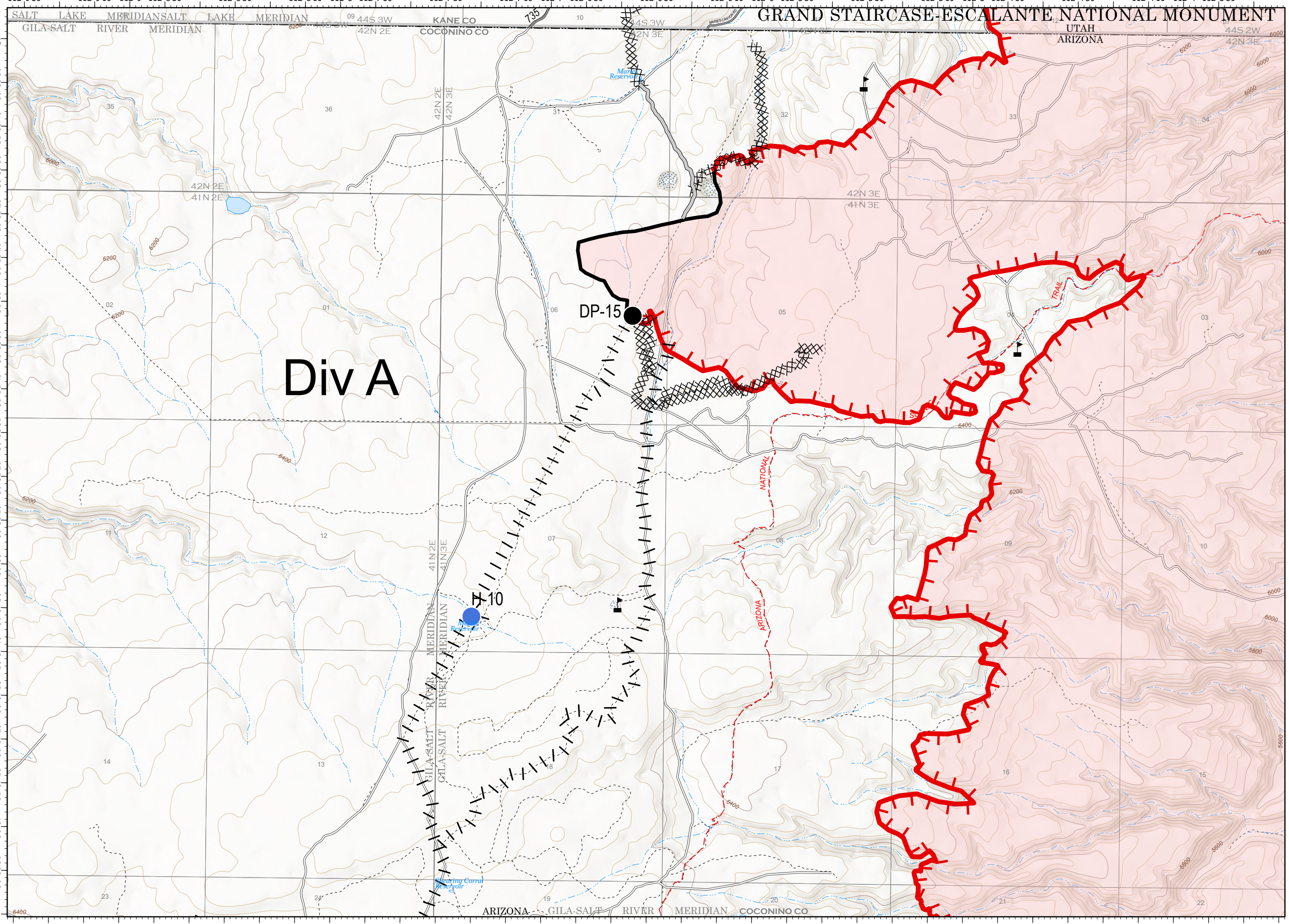
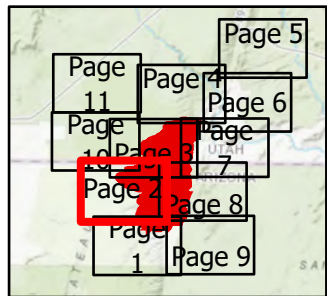
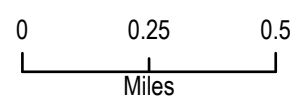
Map Prepared By: Kyson Coombs  
Current Time: 8/2/2020 20:58  
Acres from IR  
WGS84 Lat/Log grid



# GRAND STAIRCASE-ESCALANTE NATIONAL MONUMENT

**IAP Map**  
Pine Hollow Fire  
AZ-ASD-000595  
8/3/20 Day  
Appx 11,275 acres  
at 8/1/2020 2200hrs

Page 2



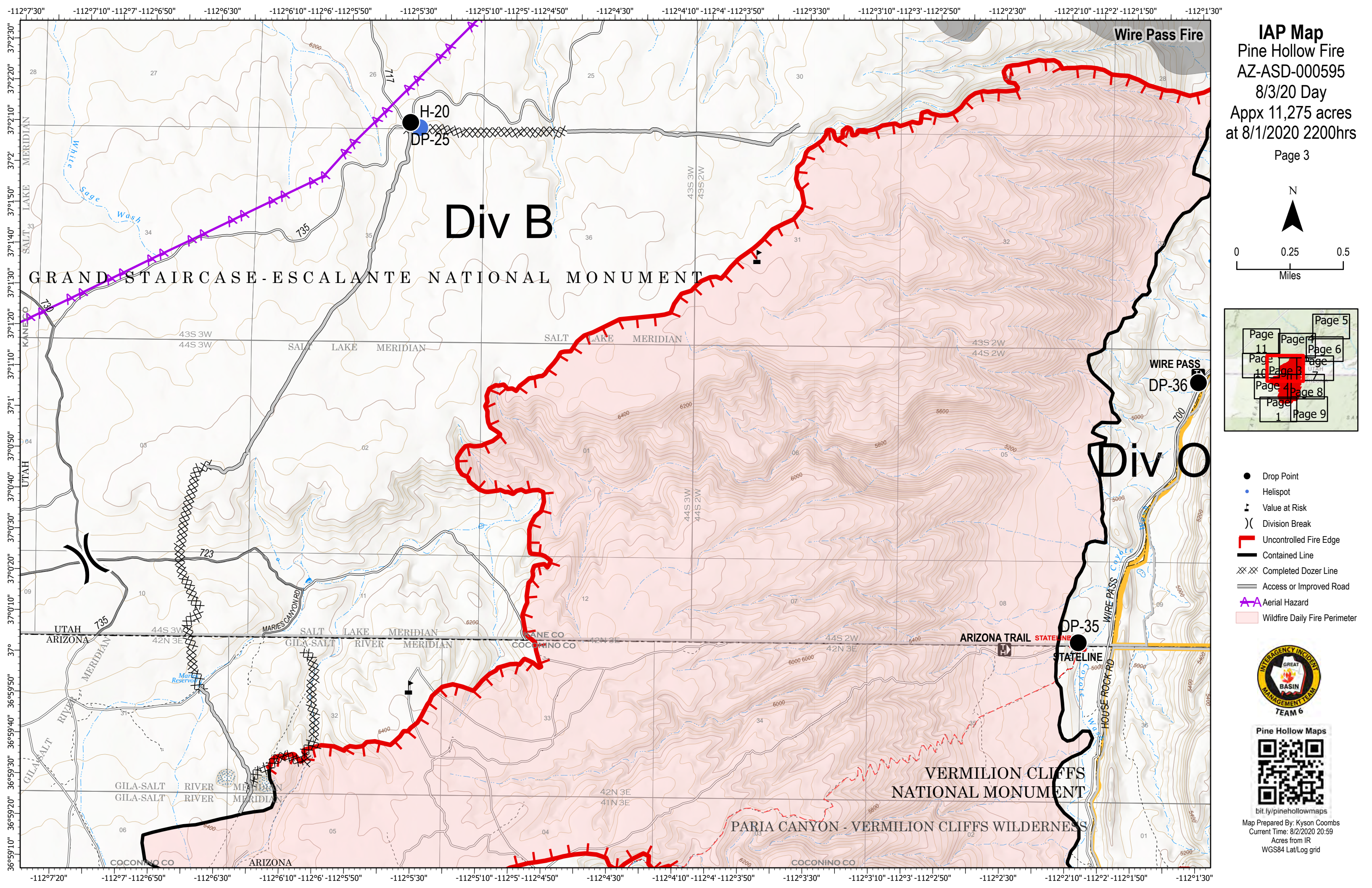
- Drop Point
- Helispot
- ▲ Value at Risk
- └ Uncontrolled Fire Edge
- ▬ Contained Line
- XX XX Completed Dozer Line
- ▬ Access or Improved Road
- | Proposed Burnout
- ▭ Wildfire Daily Fire Perimeter



bit.ly/pinehollowmaps

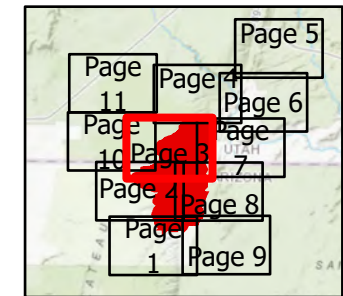
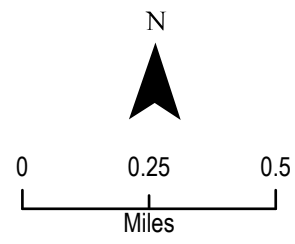
Map Prepared By: Kyson Coombs  
Current Time: 8/2/2020 20:59  
Acres from IR  
WGS84 Lat/Log grid





**IAP Map**  
 Pine Hollow Fire  
 AZ-ASD-000595  
 8/3/20 Day  
 Appx 11,275 acres  
 at 8/1/2020 2200hrs

Page 3

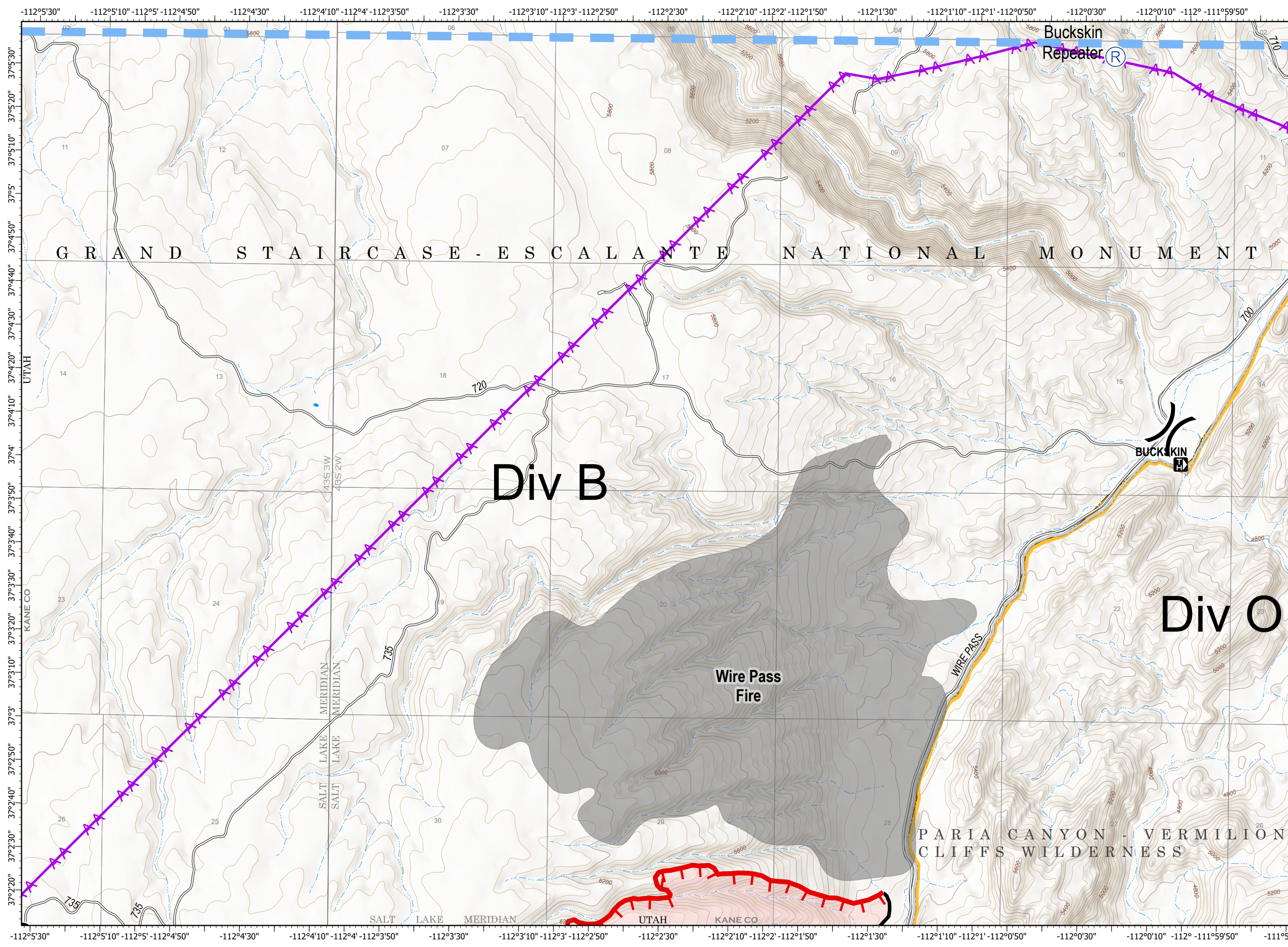


- Drop Point
- Helispot
- ⚠ Value at Risk
- ) ( Division Break
- Uncontrolled Fire Edge
- Contained Line
- XX XX Completed Dozer Line
- Access or Improved Road
- ▲ Aerial Hazard
- Wildfire Daily Fire Perimeter



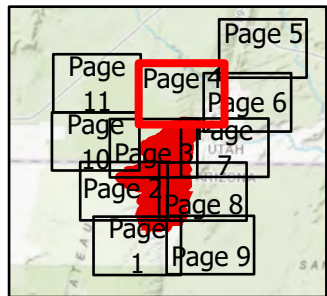
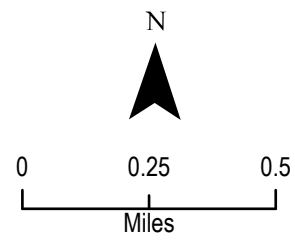
bit.ly/pinehollowmaps  
 Map Prepared By: Kyson Coombs  
 Current Time: 8/2/2020 20:59  
 Acres from IR  
 WGS84 Lat/Log grid





**IAP Map**  
 Pine Hollow Fire  
 AZ-ASD-000595  
 8/3/20 Day  
 Appx 11,275 acres  
 at 8/1/2020 2200hrs

Page 4



- Drop Point
- Helispot
- Ⓡ Repeater
- ) ( Division Break
- ▬ Uncontrolled Fire Edge
- ▬ Contained Line
- XX XX Completed Dozer Line
- ▬ Access or Improved Road
- ▲ Aerial Hazard
- ▬ Temporary Flight Restriction
- ▬ Wildfire Daily Fire Perimeter

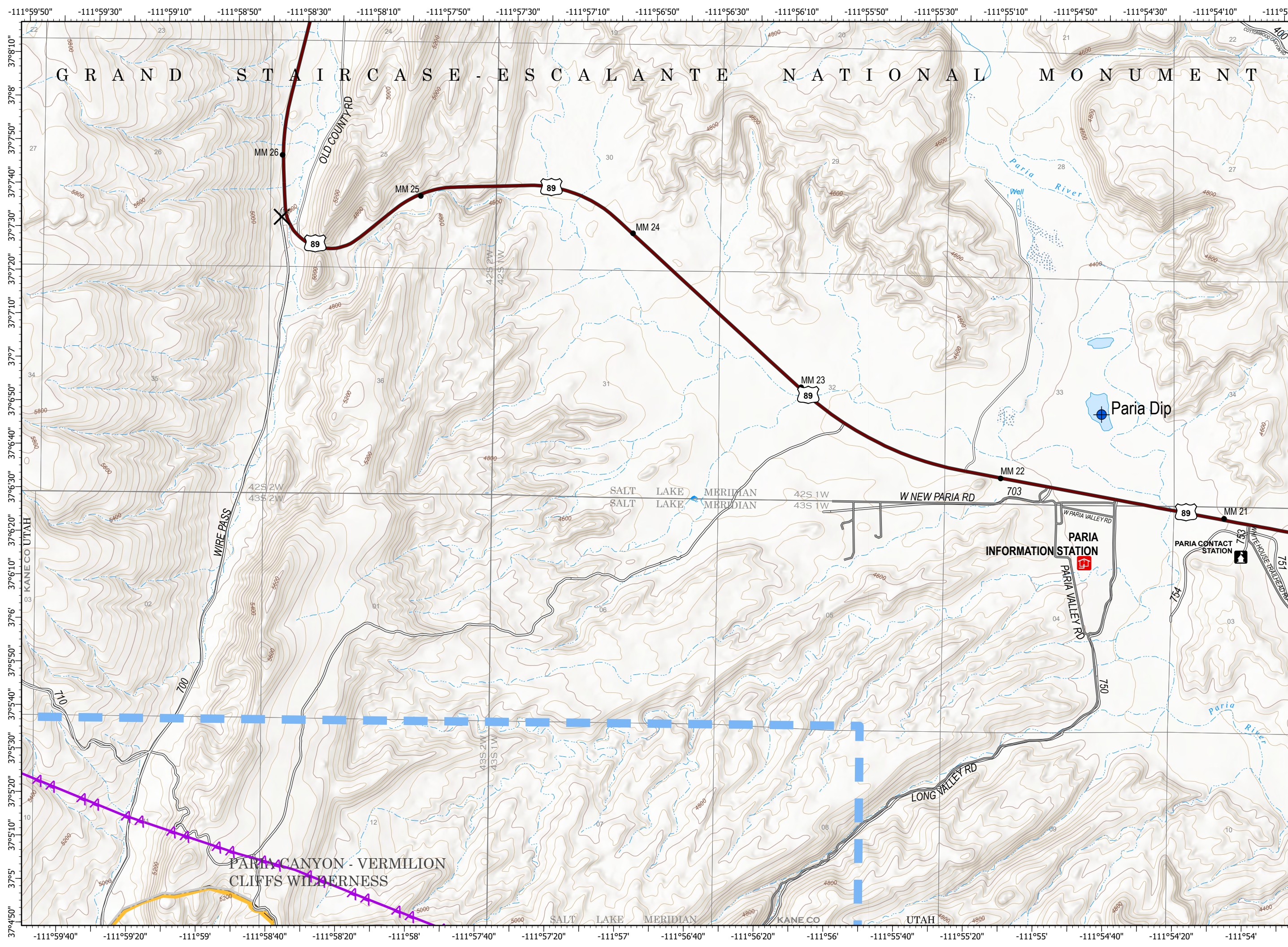


Pine Hollow Maps



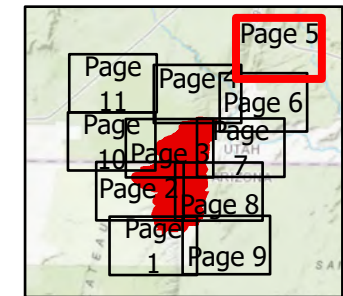
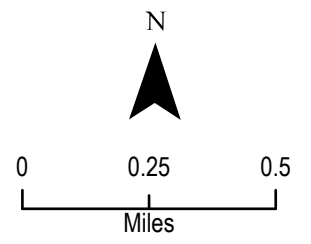
bit.ly/pinehollowmaps  
 Map Prepared By: Kyson Coombs  
 Current Time: 8/2/2020 21:00  
 Acres from IR  
 WGS84 Lat/Log grid





**IAP Map**  
 Pine Hollow Fire  
 AZ-ASD-000595  
 8/3/20 Day  
 Appx 11,275 acres  
 at 8/1/2020 2200hrs

Page 5

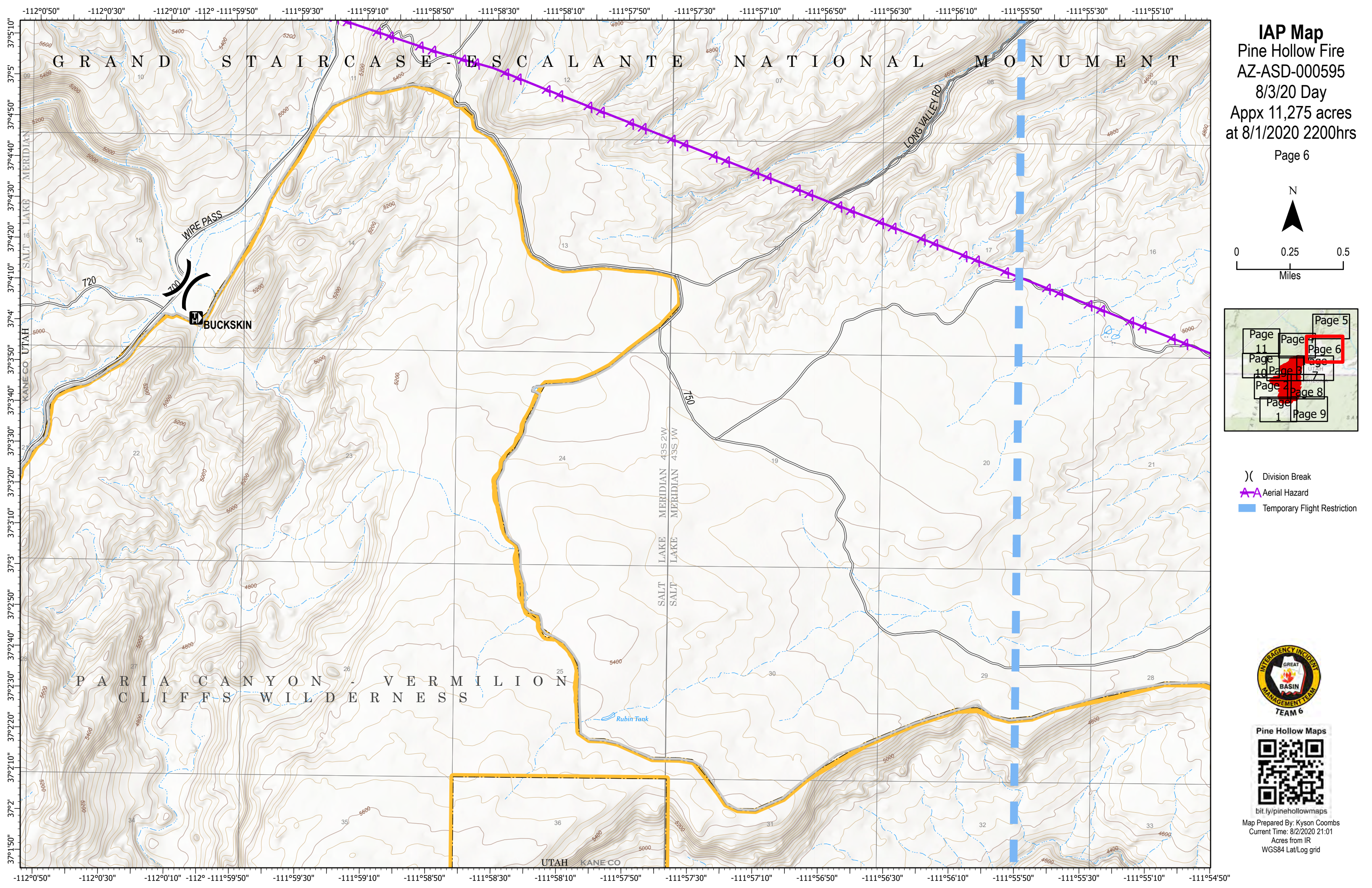


- X Closure
- ◆ Dip Site
- ▲ Aerial Hazard
- ▬ Temporary Flight Restriction



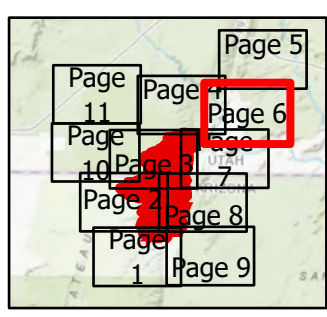
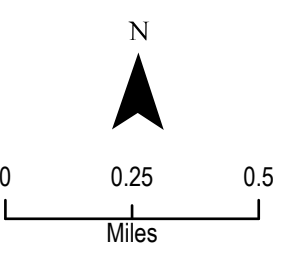
bit.ly/pinehollowmaps  
 Map Prepared By: Kyson Coombs  
 Current Time: 8/2/2020 21:00  
 Acres from IR  
 WGS84 Lat/Log grid





**IAP Map**  
Pine Hollow Fire  
AZ-ASD-000595  
8/3/20 Day  
Appx 11,275 acres  
at 8/1/2020 2200hrs

Page 6

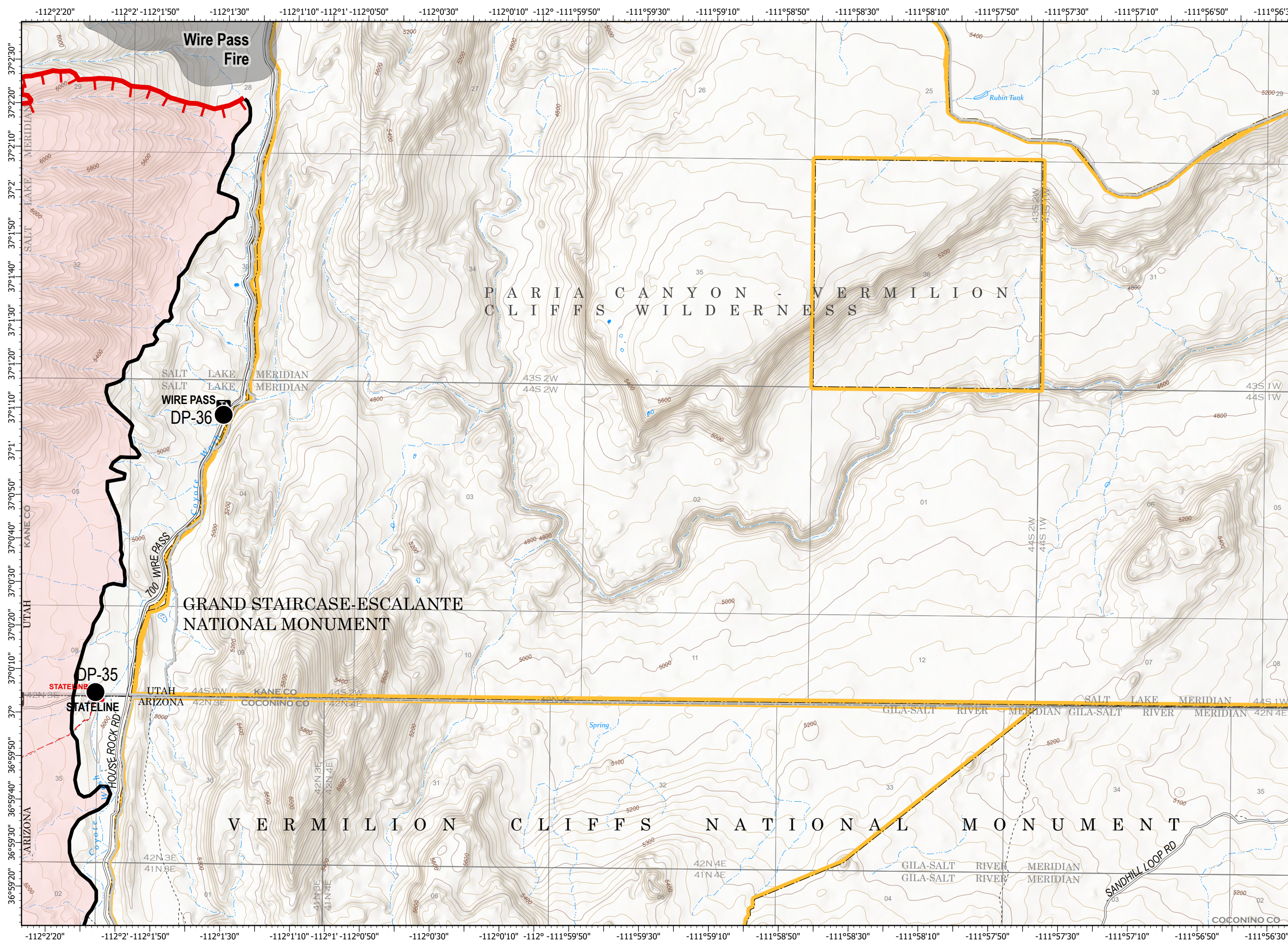


- Division Break
- Aerial Hazard
- Temporary Flight Restriction



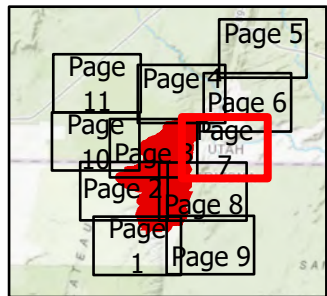
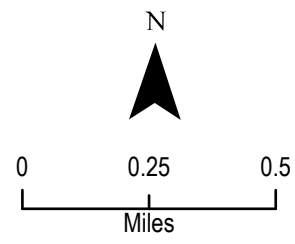
bit.ly/pinehollowmaps  
Map Prepared By: Kyson Coombs  
Current Time: 8/2/2020 21:01  
Acres from IR  
WGS84 Lat/Log grid





**IAP Map**  
 Pine Hollow Fire  
 AZ-ASD-000595  
 8/3/20 Day  
 Appx 11,275 acres  
 at 8/1/2020 2200hrs

Page 7

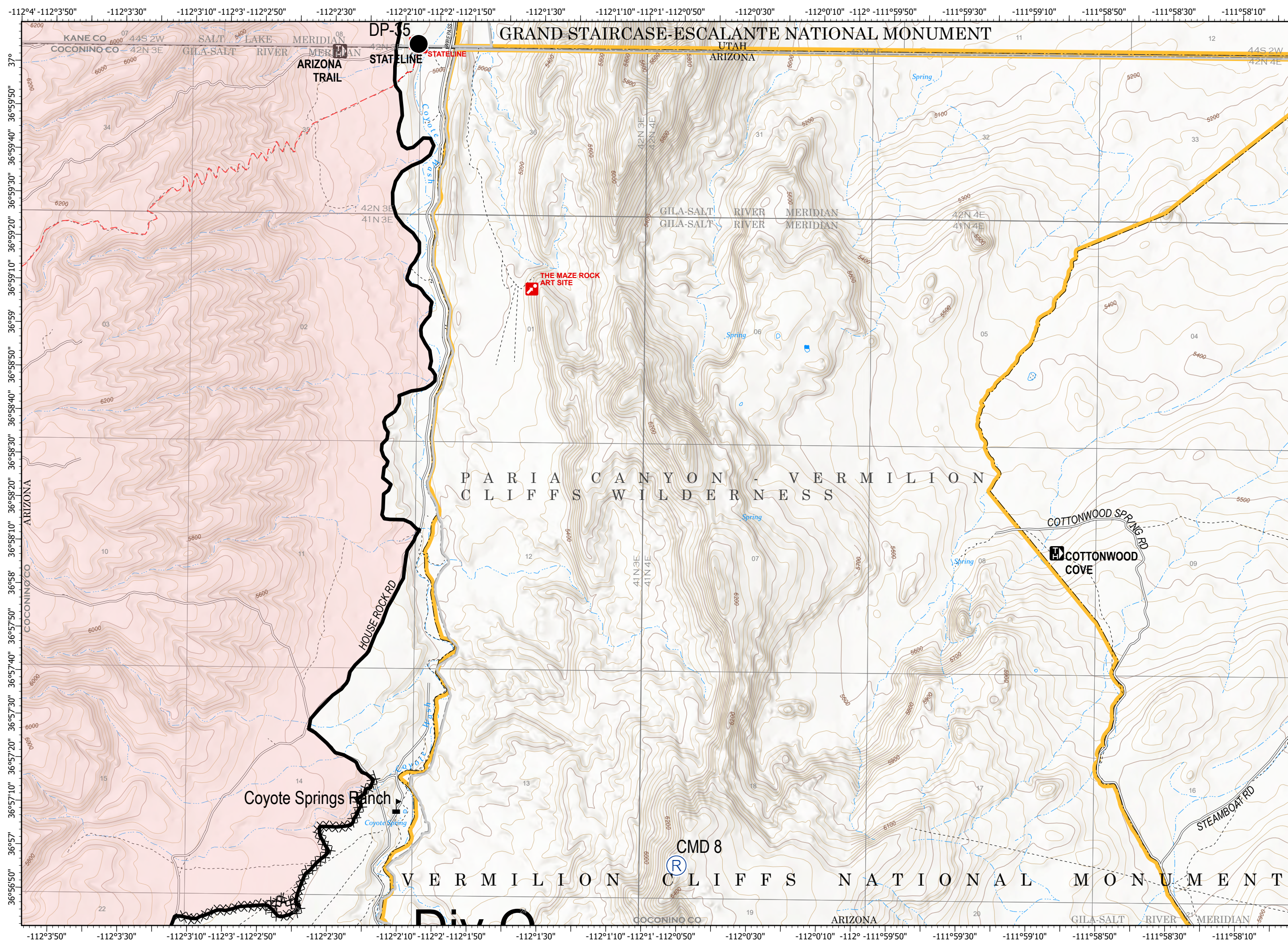


- Drop Point
- ▬ Uncontrolled Fire Edge
- ▬ Contained Line
- ▭ Wildfire Daily Fire Perimeter



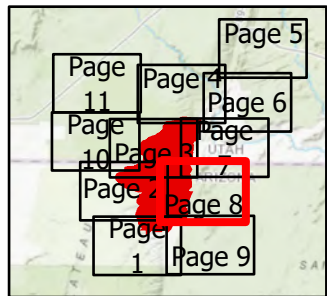
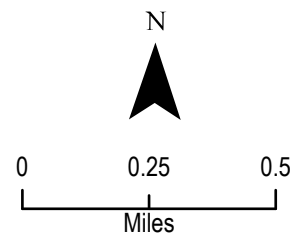
Map Prepared By: Kyson Coombs  
 Current Time: 8/2/2020 21:02  
 Acres from IR  
 WGS84 Lat/Log grid





**IAP Map**  
 Pine Hollow Fire  
 AZ-ASD-000595  
 8/3/20 Day  
 Appx 11,275 acres  
 at 8/1/2020 2200hrs

Page 8

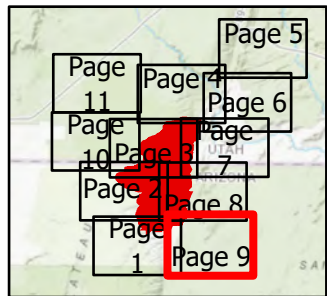
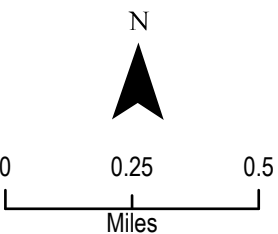


- Drop Point
- Ⓡ Repeater
- ⚠ Value at Risk
- Contained Line
- XX XX Completed Dozer Line
- Wildfire Daily Fire Perimeter



Map Prepared By: Kyson Coombs  
 Current Time: 8/2/2020 21:02  
 Acres from IR  
 WGS84 Lat/Log grid

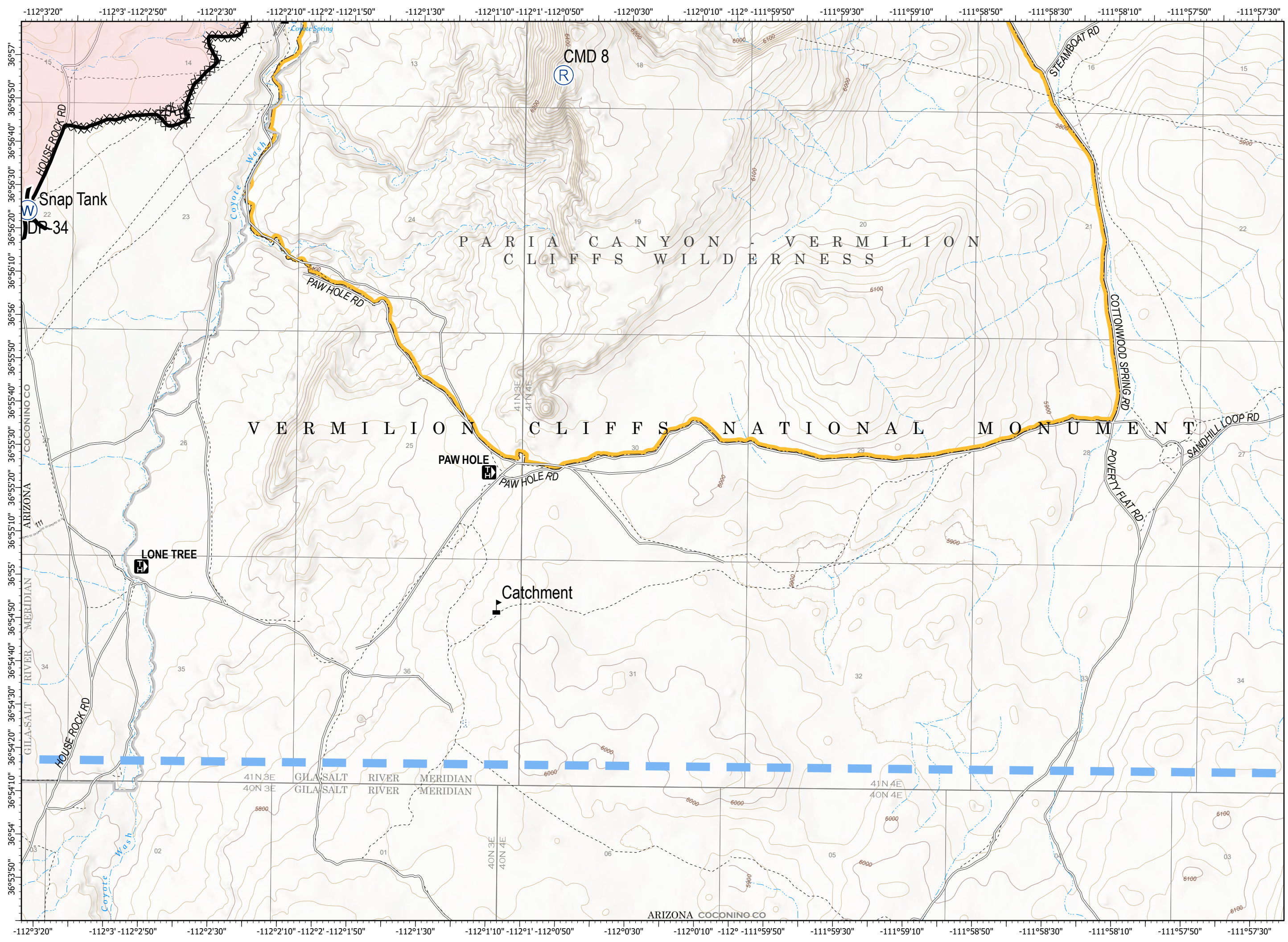




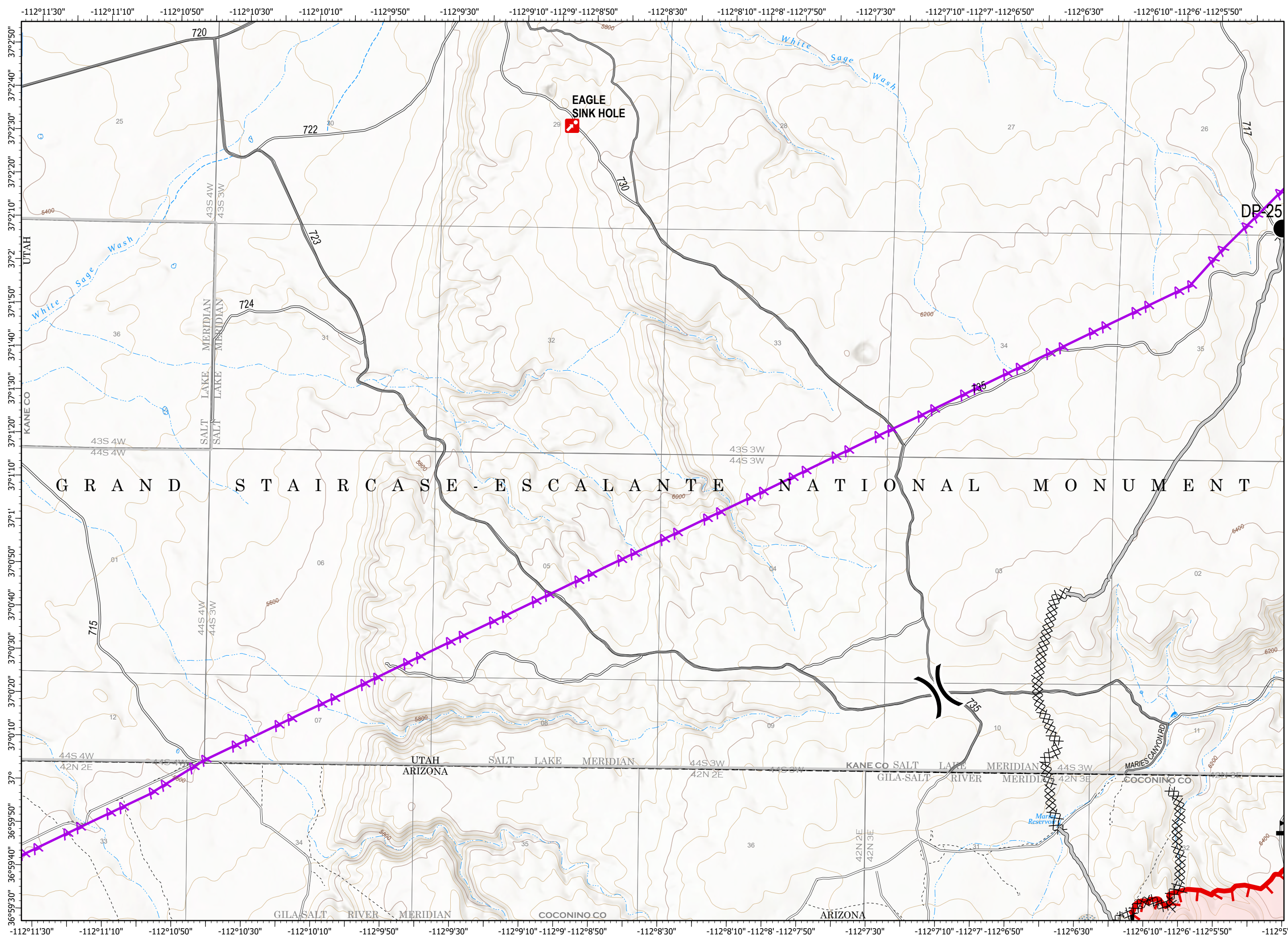
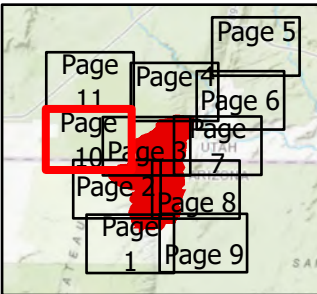
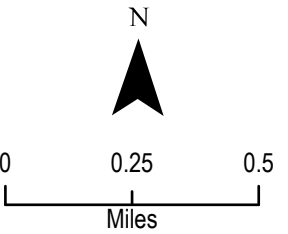
- Drop Point
- Ⓡ Repeater
- Ⓜ Water Source
- ⚠ Value at Risk
- ) ( Division Break
- Contained Line
- XX XX Completed Dozer Line
- ▬ Temporary Flight Restriction
- ▭ Wildfire Daily Fire Perimeter



bit.ly/pinehollowmaps  
 Map Prepared By: Kyson Coombs  
 Current Time: 8/2/2020 21:03  
 Acres from IR  
 WGS84 Lat/Log grid



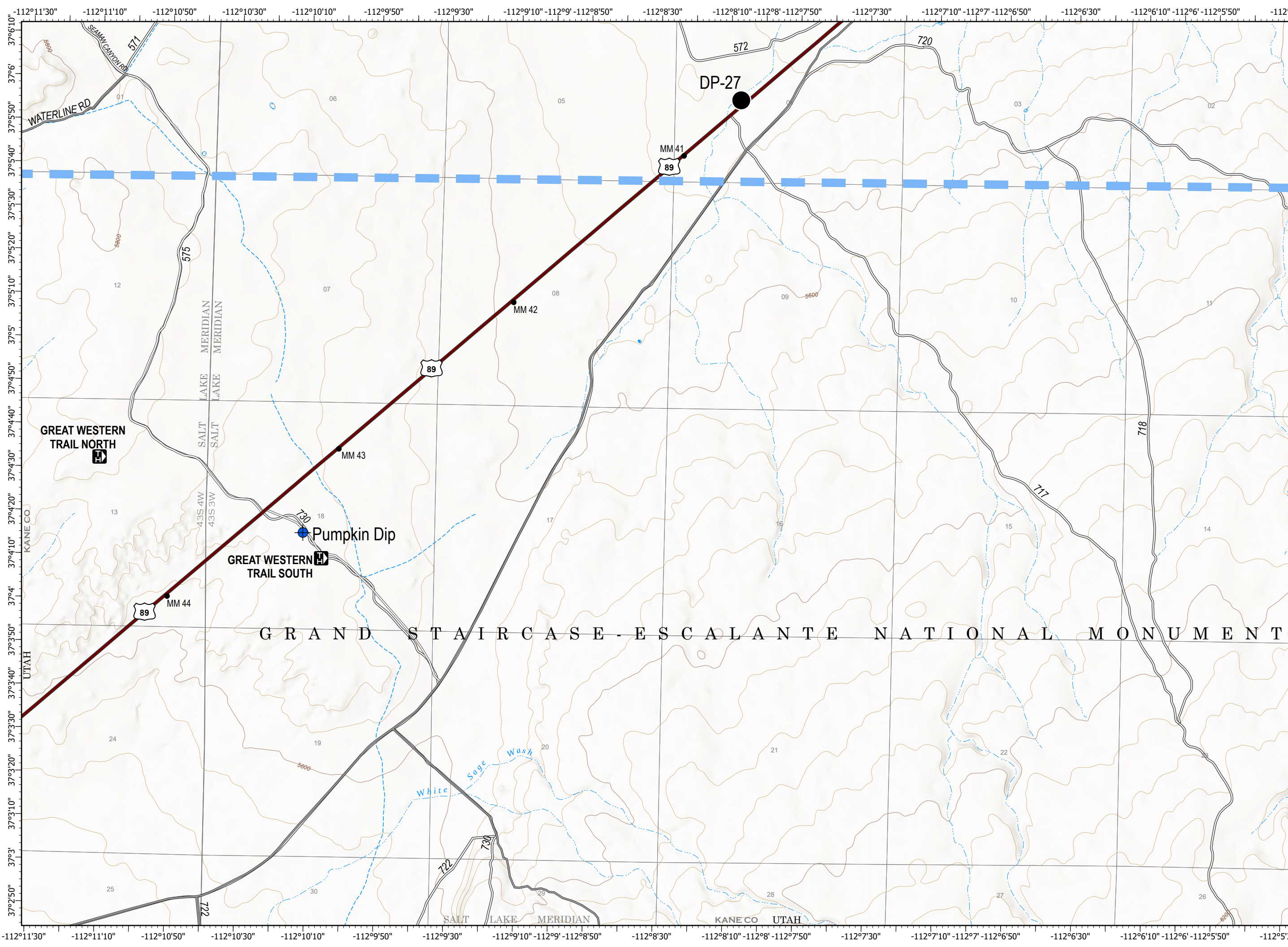




- Drop Point
- Helispot
- ▲ Value at Risk
- ) ( Division Break
- ▬ Uncontrolled Fire Edge
- ▬ Contained Line
- XX XX Completed Dozer Line
- ▬ Access or Improved Road
- ▲ Aerial Hazard
- ▬ Temporary Flight Restriction
- ▬ Wildfire Daily Fire Perimeter

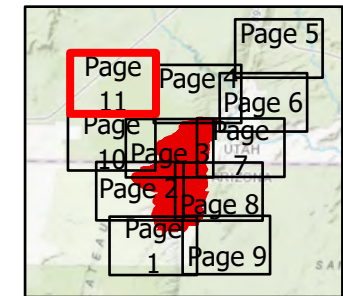
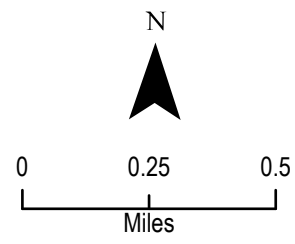






**IAP Map**  
 Pine Hollow Fire  
 AZ-ASD-000595  
 8/3/20 Day  
 Appx 11,275 acres  
 at 8/1/2020 2200hrs

Page 11



- ◆ Dip Site
- Drop Point
- Temporary Flight Restriction



Map Prepared By: Kyson Coombs  
 Current Time: 8/2/2020 21:04  
 Acres from IR  
 WGS84 Lat/Log grid