

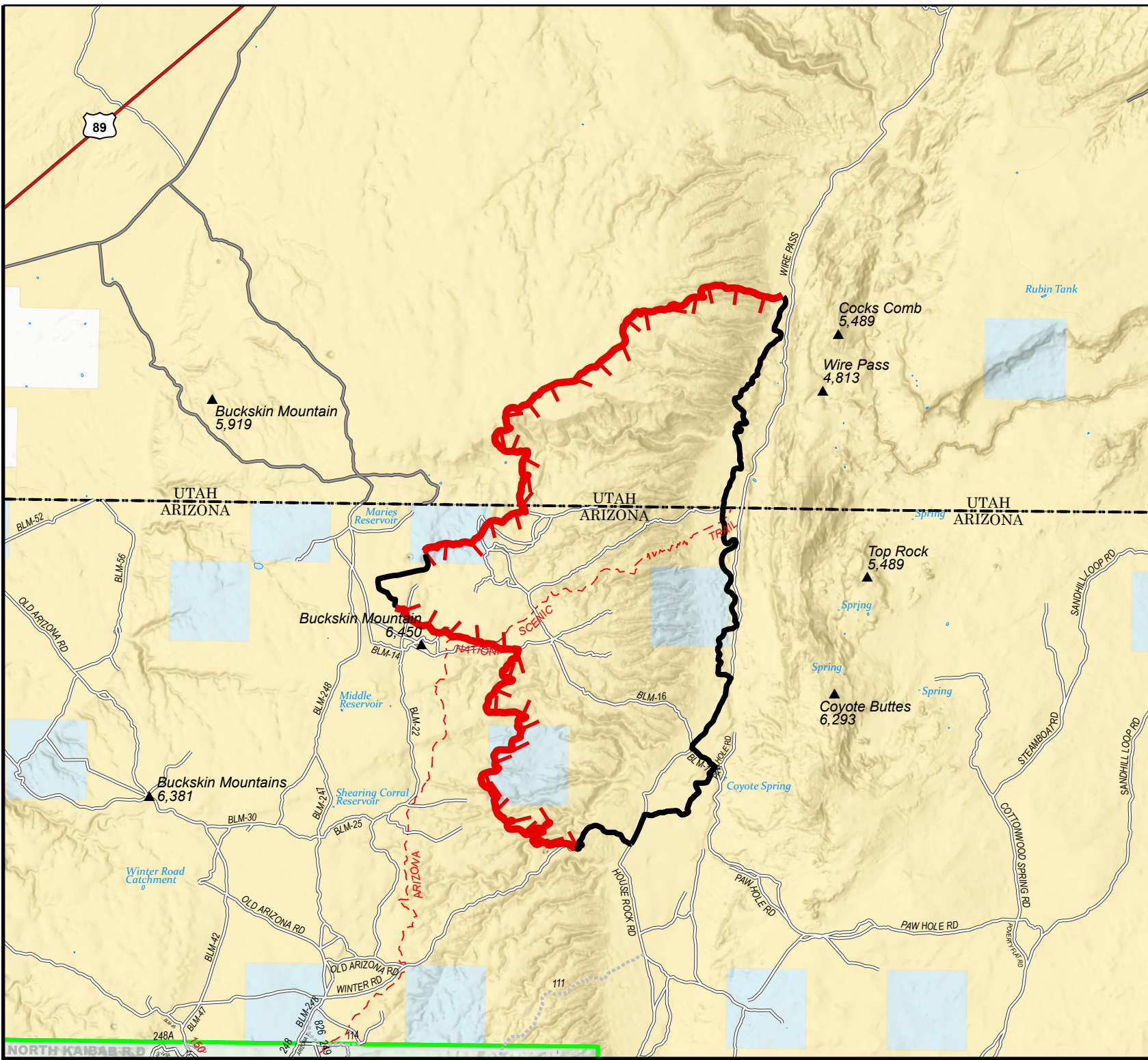
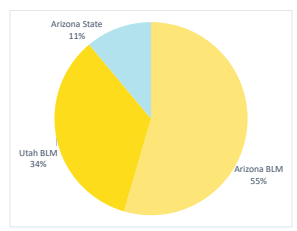
Pine Hollow Fire

Ownership Map

AZ-ASD-000595
August 3, 2020
appx. 11,373 acres

- Land Management Agency**
- Bureau of Land Management
 - Private
 - State
 - US Forest Service

Owner	Acres	Percent
Arizona BLM	6,235	55%
Utah BLM	3,879	34%
Arizona State	1,259	11%
Totals	11,373	100%



Great Basin Team 6 GIS
author: kscorling
date: 20200803 1250 hr
file: OWNERSHIP_2020_PineHollow_AZASD000595_Event_Acres_2_5.mxd

Projection: NAD83 UTM Zone 12 N
Lat-Long Grid Ticks: 5' minute interval

0 0.5 1 2 3
Miles