

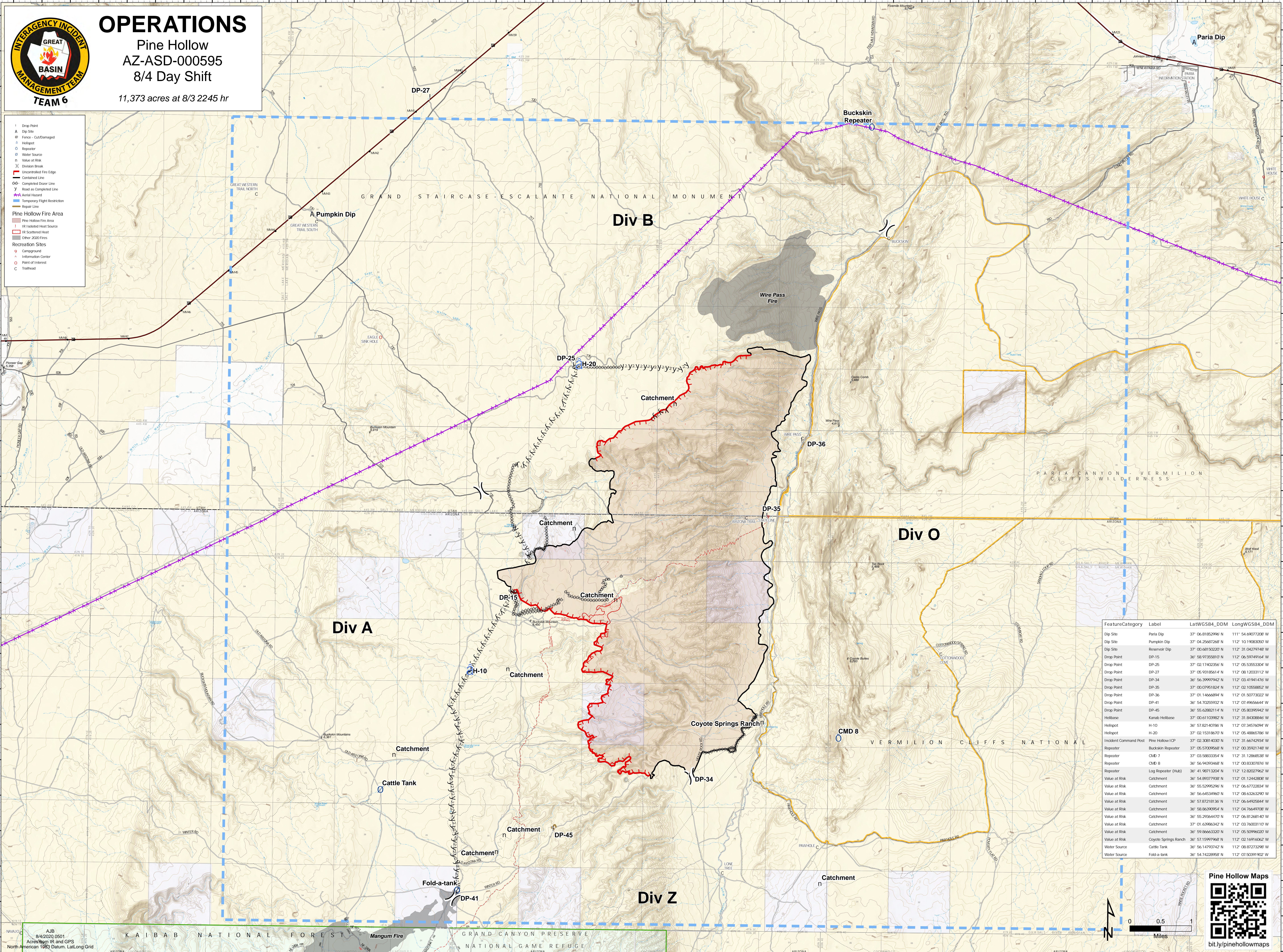


OPERATIONS

Pine Hollow
AZ-ASD-000595
8/4 Day Shift

11,373 acres at 8/3 2245 hr

- Drop Point
 - Dip Site
 - Fence - Cut/Damaged
 - Heligot
 - Repeater
 - Water Source
 - Value at Risk
 - Division Break
 - Uncontrolled Fire Edge
 - Controlled Line
 - Completed Border Line
 - Road as Completed Line
 - Aerial Hazard
 - Temporary Flight Restriction
 - Repair Line
- Pine Hollow Fire Area**
- Pine Hollow Fire Area
 - IR Isolated Heat Source
 - IR Scattered Heat
 - Other 2000 Fires
- Recreation Sites**
- Campground
 - Information Center
 - Point of Interest
 - Trailhead



FeatureCategory	Label	LatWGS84_DDM	LongWGS84_DDM
Dip Site	Paria Dip	37° 06' 81.85296" N	111° 54' 69.077208" W
Dip Site	Pumpkin Dip	37° 04' 25.687268" N	112° 10' 19.033050" W
Dip Site	Reservoir Dip	37° 00' 68.150220" N	112° 31' 04.279748" W
Drop Point	DP-15	36° 58' 97.355810" N	112° 06' 59.974916" W
Drop Point	DP-25	37° 02' 17.402356" N	112° 05' 55.63304" W
Drop Point	DP-27	37° 05' 93.185614" N	112° 08' 12.033112" W
Drop Point	DP-34	36° 56' 39.997942" N	112° 03' 41.941476" W
Drop Point	DP-35	37° 00' 07.951824" N	112° 02' 10.58852" W
Drop Point	DP-36	37° 01' 14.666894" N	112° 01' 50.773022" W
Drop Point	DP-41	36° 54' 70.255932" N	112° 07' 49.65644" W
Drop Point	DP-45	36° 55' 62.82114" N	112° 05' 30.95942" W
Helibase	Kimbab Helibase	37° 00' 61.02982" N	112° 31' 34.30846" W
Heligot	H-10	36° 57' 52.14078" N	112° 07' 34.576094" W
Heligot	H-20	37° 02' 15.310670" N	112° 05' 48.65781" W
Incident Command Post	Pine Hollow ICP	37° 02' 30.814030" N	112° 31' 66.742934" W
Repeater	Buckskin Repeater	37° 05' 57.009568" N	112° 00' 35.921748" W
Repeater	CMD 7	37° 03' 58.833354" N	112° 31' 12.865338" W
Repeater	CMD 8	36° 56' 94.393468" N	112° 00' 83.307876" W
Repeater	Log Repeater (Hub)	36° 41' 9.8713208" N	112° 12' 12.8027962" W
Value at Risk	Catchment	36° 54' 89.37938" N	112° 01' 12.442808" W
Value at Risk	Catchment	36° 55' 52.995296" N	112° 01' 06.722834" W
Value at Risk	Catchment	36° 56' 45.34960" N	112° 08' 63.6263290" W
Value at Risk	Catchment	36° 57' 87.218136" N	112° 06' 49.25844" W
Value at Risk	Catchment	36° 58' 86.390954" N	112° 04' 76.49708" W
Value at Risk	Catchment	36° 55' 29.364470" N	112° 06' 81.268140" W
Value at Risk	Catchment	37° 01' 6.986342" N	112° 03' 76.003110" W
Value at Risk	Catchment	36° 59' 86.6320" N	112° 05' 50.96200" W
Value at Risk	Coyote Springs Ranch	36° 57' 15.997968" N	112° 02' 16.916062" W
Water Source	Cattle Tank	36° 54' 14.793742" N	112° 08' 87.273298" W
Water Source	Fold-a-tank	36° 54' 74.28958" N	112° 07' 50.991902" W

AJB 8/4/2020 0501
Acres from IR and GPS
North American 1983 Datum, Lat/Long Grid

Pine Hollow Maps

0 0.5 1 Miles

bit.ly/pinehollowmaps