

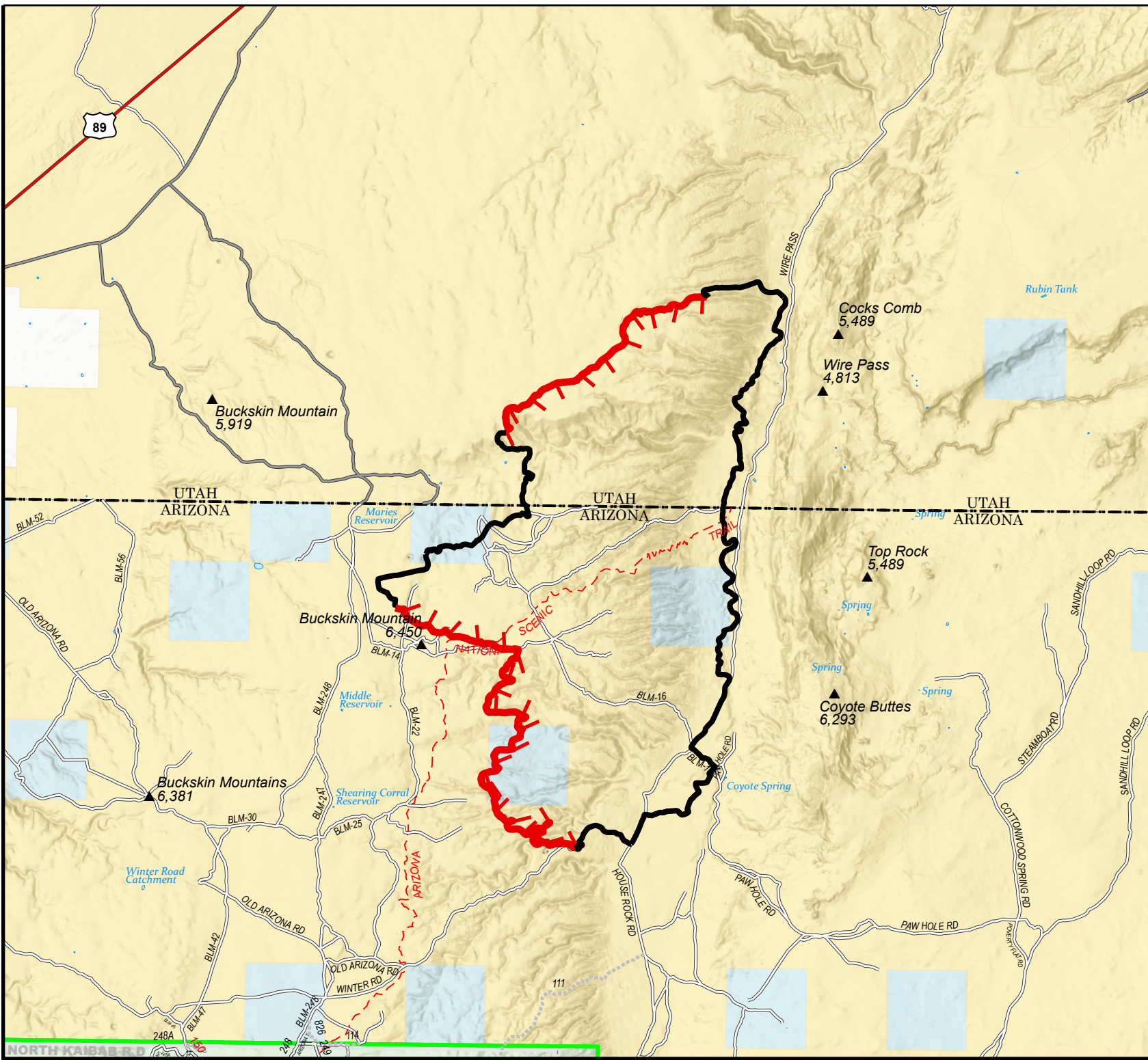
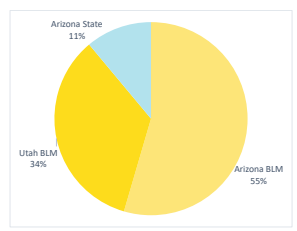
# Pine Hollow Fire

## Ownership Map

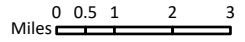
AZ-ASD-000595  
August 4, 2020  
appx. 11,405 acres

- Land Management Agency**
- Bureau of Land Management
  - Private
  - State
  - US Forest Service

Owner	Acres	Percent
Arizona BLM	6,230	55%
Utah BLM	3,918	34%
Arizona State	1,257	11%
<b>Totals</b>	<b>11,405</b>	<b>100%</b>



Projection: NAD83 UTM Zone 12 N  
Lat-Long Grid Ticks: 5' minute interval



Great Basin Team 6 GIS  
author: shane  
date: 20200804 1557 hr  
file: OWNERSHIP\_2020\_PineHollow\_AZASD000595\_Event\_Acres\_2\_5.mxd