

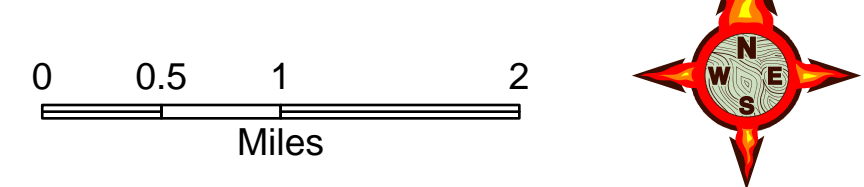
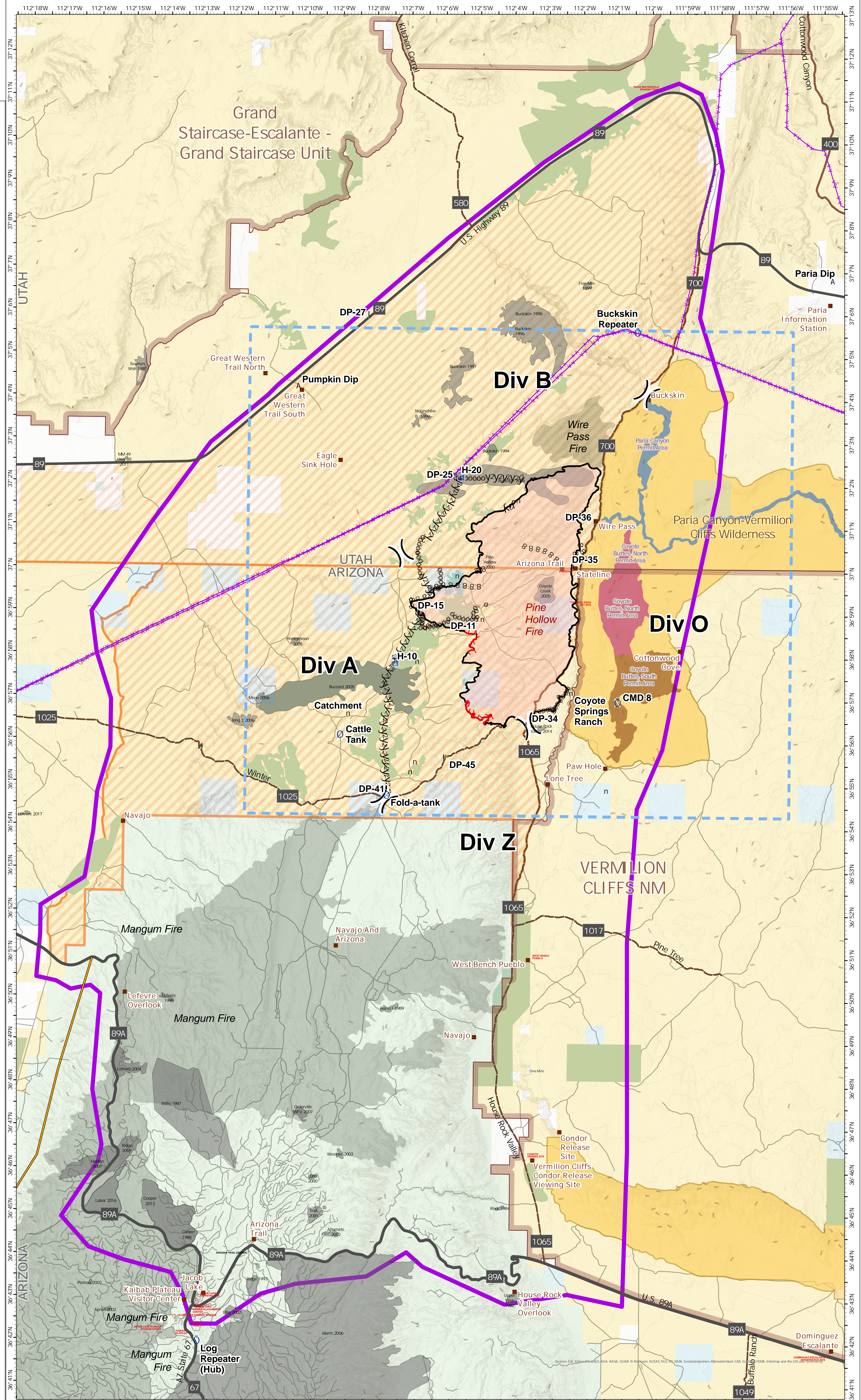
# Planning Map

Pine Hollow Fire  
AZ-ASD-000595

August 4, 2020

11,373 acres at 8/3 2245 hrz

- A Dip Site
- Drop Point
- Helispot
- Repeater
- Water Source
- Value at Risk
- Division Break
- Uncontrolled Fire Edge
- Contained Line
- Completed Doser Line
- Road as Completed Line
- Aerial Hazard
- Aerial Retardant Drop
- Temporary Flight Restriction
- Repair Line
- Management Action Point
- Wildfire Daily Fire Perimeter
- Planning Area
- BLM\_ASDO\_designated\_wilderness\_Mangum\_selection
- BLM\_ASDO\_powerlines\_Mangum\_selection
- BLM\_ASDO\_recreation\_infrastructure\_Mangum\_selecti
- UT\_completed\_veg\_treatments
- BLM\_ASDO\_completed\_vegetation\_treatments\_Mangu
- AZ BLM
- AZ PVT
- AZ ST
- AZ USFS
- UT BLM
- UT PVT
- UT ST
- Coyote Buttes, North
- Coyote Buttes, South
- Paria Canyon
- VCONM\_GSENM\_BLM\_national\_monuments
- Event Polygon
- GNIS\_USGS\_Mountain\_Features
- GNIS\_Populated\_Places\_Some
- N. 0. 1. N. 0. 3. N. 0. 5. N. 0. 6. N. 1. 4. 1. N. 1. 4. 6. N. 1. 5. 1. N. 4. 3. 1. N. 1. 3. 6. N. 1. 2. 1. N. 1. 3. 1. N. 1. 1. 2
- State\_Boundary
- Normal Index
- BLM\_ASFO\_closure\_area\_PineHollow\_AZASD000595\_2
- BLM\_KFO\_closure\_area\_PineHollow\_AZASD000595\_20
- Label\_Point
- InteragencyFirePerimeterHistory
- Principle Paved Highways
- Scenic Backways
- Scenic Byways
- Unpaved Roads



1:51,000 - kgalz - 8/4/2020 1731  
North American 1983 Datum, Lat,Long Grid