

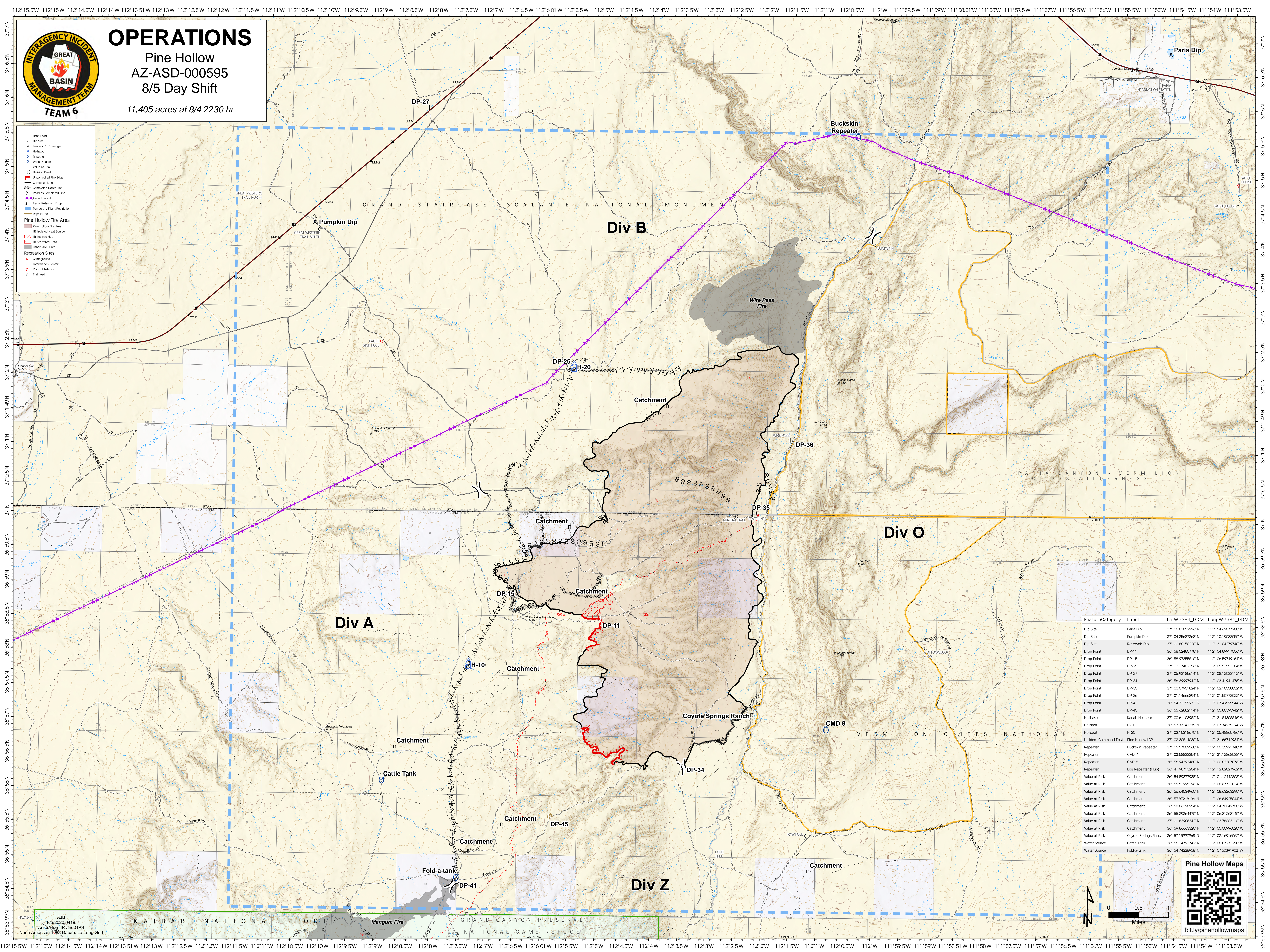


OPERATIONS

Pine Hollow
AZ-ASD-000595
8/5 Day Shift

11,405 acres at 8/4 2230 hr

- Drop Point
- Dip Site
- Fence - Out Damaged
- Helipod
- Repeater
- Water Source
- Value at Risk
- Division Break
- Uncontrolled Fire Edge
- Controlled Line
- Completed Outer Line
- Road as Completed Line
- Aerial Repeater
- Aerial Repeater Drop
- Temporary Flight Restriction
- Search Line
- Pine Hollow Fire Area
- IR Isolated Heat Source
- IR Intense Heat
- IR Scattered Heat
- Other 2000 Fires
- Recreation Sites
- Campground
- Information Center
- Point of Interest
- Trailhead



FeatureCategory	Label	LatWGS84_DDM	LongWGS84_DDM
Dip Site	Paria Dip	37° 06' 81.85296" N	111° 54' 69.077208" W
Dip Site	Pumpkin Dip	37° 04' 25.687268" N	112° 10' 19.033050" W
Dip Site	Reservoir Dip	37° 00' 68.150220" N	112° 31' 04.279748" W
Drop Point	DP-11	36° 58' 52.489778" N	112° 04' 89.917556" W
Drop Point	DP-15	36° 58' 97.35810" N	112° 06' 59.49164" W
Drop Point	DP-25	37° 02' 17.402356" N	112° 05' 53.53304" W
Drop Point	DP-27	37° 05' 93.185614" N	112° 08' 12.033112" W
Drop Point	DP-34	36° 56' 39.997942" N	112° 03' 41.941476" W
Drop Point	DP-35	37° 00' 07.951824" N	112° 02' 10.558852" W
Drop Point	DP-36	37° 01' 14.666994" N	112° 01' 50.773022" W
Drop Point	DP-41	36° 54' 70.259922" N	112° 07' 49.66644" W
Drop Point	DP-45	36° 55' 62.882114" N	112° 05' 00.95942" W
Helibase	Kimbab Helibase	37° 00' 61.102982" N	112° 07' 34.308846" W
Helipod	H-10	36° 57' 52.140786" N	112° 07' 35.71094" W
Helipod	H-20	37° 02' 15.318670" N	112° 05' 48.865786" W
Incident Command Post	Pine Hollow ICP	37° 02' 30.814030" N	112° 31' 66.742934" W
Repeater	Buckskin Repeater	37° 05' 57.009568" N	112° 00' 35.921748" W
Repeater	CMD 7	37° 03' 58.833354" N	112° 31' 12.86538" W
Repeater	CMD 8	36° 56' 94.933468" N	112° 00' 83.307876" W
Repeater	Log Repeater (Hub)	36° 41' 98.713204" N	112° 12' 82.002762" W
Value at Risk	Catchment	36° 54' 89.377938" N	112° 01' 12.442838" W
Value at Risk	Catchment	36° 55' 52.995296" N	112° 06' 67.22834" W
Value at Risk	Catchment	36° 56' 64.534960" N	112° 08' 63.632907" W
Value at Risk	Catchment	36° 57' 87.218136" N	112° 06' 64.92844" W
Value at Risk	Catchment	36° 58' 86.390954" N	112° 04' 76.49708" W
Value at Risk	Catchment	36° 55' 29.364470" N	112° 06' 81.268140" W
Value at Risk	Catchment	37° 01' 63.988342" N	112° 03' 76.03110" W
Value at Risk	Catchment	36° 59' 86.63202" N	112° 05' 50.996202" W
Value at Risk	Coyote Springs Ranch	36° 57' 15.997968" N	112° 02' 16.91602" W
Water Source	Cattle Tank	36° 56' 14.793742" N	112° 08' 87.273288" W
Water Source	Fold-a-tank	36° 54' 74.28958" N	112° 07' 50.391902" W

