

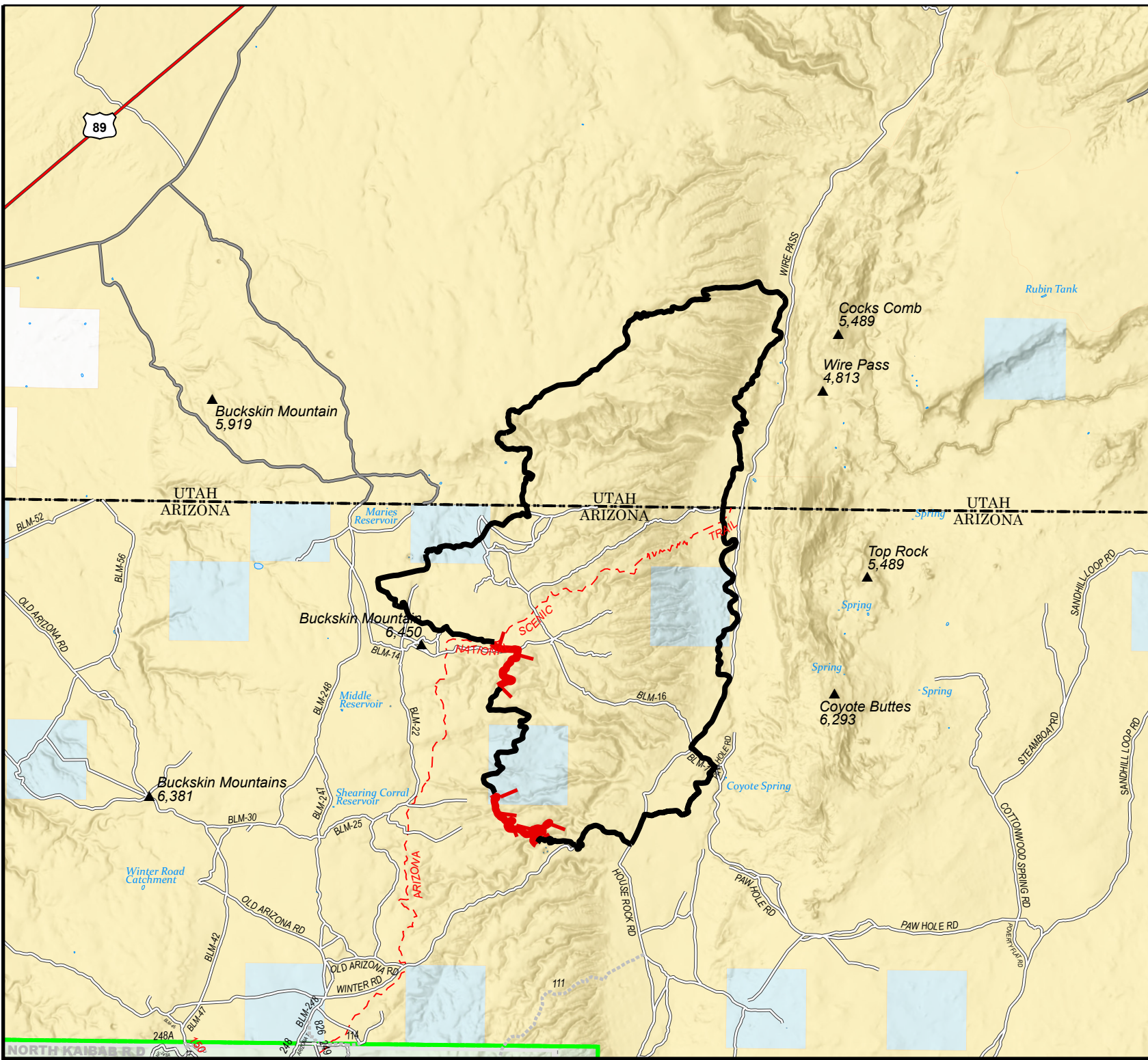
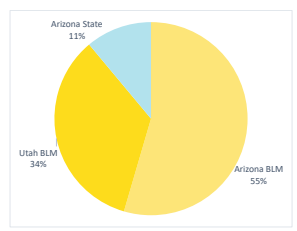
Pine Hollow Fire

Ownership Map

AZ-ASD-000595
August 5, 2020
appx. 11,405 acres

- Land Management Agency**
- Bureau of Land Management
 - Private
 - State
 - US Forest Service

Owner	Acres	Percent
Arizona BLM	6,230	55%
Utah BLM	3,918	34%
Arizona State	1,257	11%
Totals	11,405	100%



Great Basin Team 6 GIS
author: dsharkey
date: 20200805 0837 hr
file: OWNERSHIP_2020_PineHollow_AZASD000595_Event_Acres_2_5.mxd

Projection: NAD83 UTM Zone 12 N
Lat-Long Grid Ticks: 5' minute interval

Miles 0 1 2 3 4