

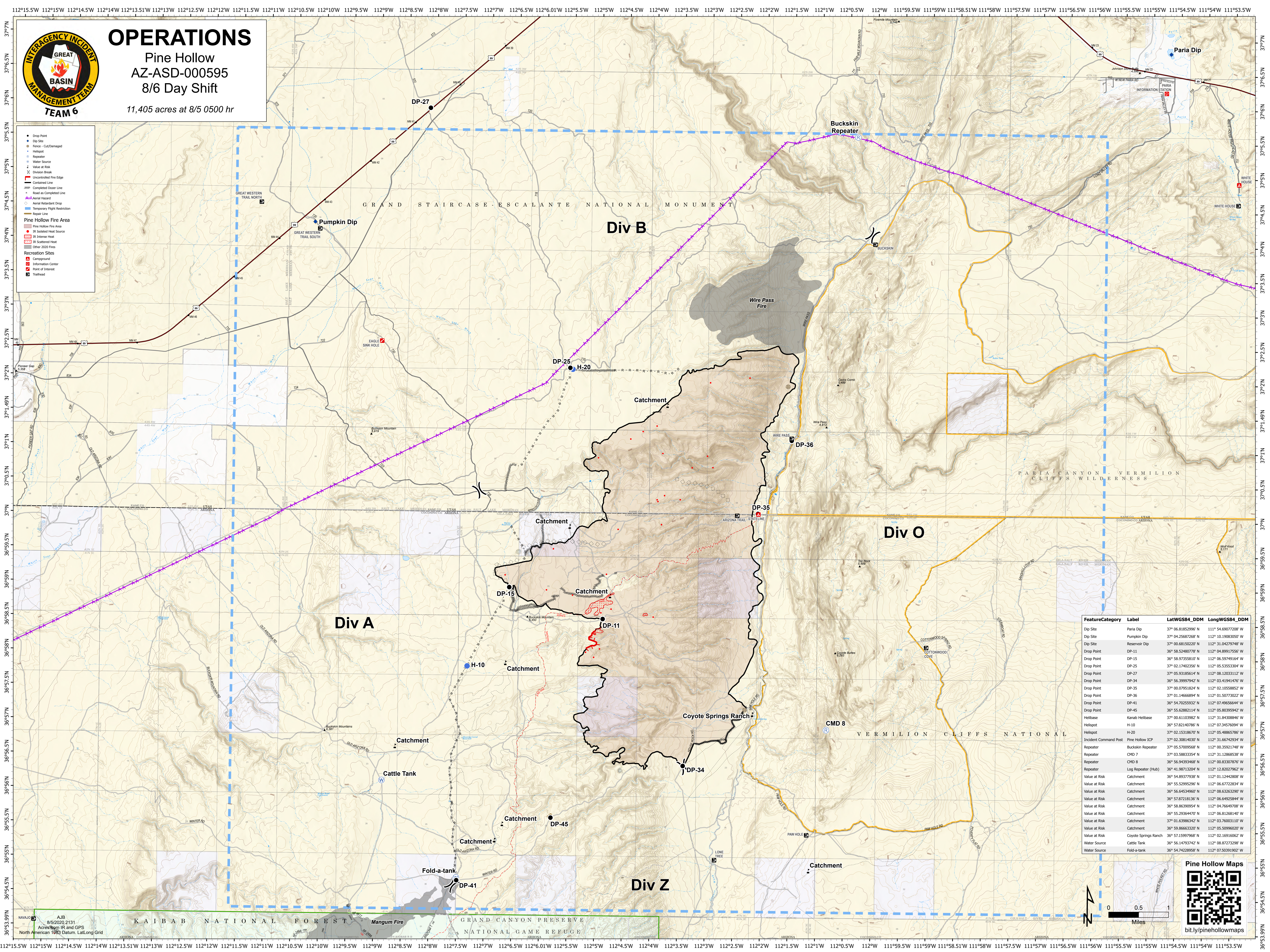


OPERATIONS

Pine Hollow
AZ-ASD-000595
8/6 Day Shift

11,405 acres at 8/5 0500 hr

- Drop Point
 - Dip Site
 - Fence - Cut/Damaged
 - Helispot
 - Reservoir
 - Water Source
 - Value at Risk
 - Division Break
 - Uncontested Fire Edge
 - Contained Line
 - Completed Dozer Line
 - Road as Completed Line
 - Aerial Repeater
 - Aerial Retardant Drop
 - Temporary Flight Restriction
 - Scout Line
- Pine Hollow Fire Area**
- IR Isolated Heat Source
 - IR Intense Heat
 - IR Scattered Heat
 - Other 2020 Fires
- Recreation Sites**
- Campground
 - Information Center
 - Point of Interest
 - Trailhead



Feature/Category	Label	LatWGS84_DDM	LongWGS84_DDM
Dip Site	Paria Dip	37° 06.8185296' N	111° 54.6907208' W
Dip Site	Pumpkin Dip	37° 04.25687268' N	112° 10.19083050' W
Dip Site	Reservoir Dip	37° 00.68150020' N	112° 31.04279748' W
Drop Point	DP-11	36° 58.52480778' N	112° 04.89917556' W
Drop Point	DP-15	36° 58.97355810' N	112° 06.59749164' W
Drop Point	DP-25	37° 02.17402356' N	112° 05.5353304' W
Drop Point	DP-27	37° 05.93185614' N	112° 08.12033112' W
Drop Point	DP-34	36° 56.39997942' N	112° 03.41941476' W
Drop Point	DP-35	37° 00.07951824' N	112° 02.10558852' W
Drop Point	DP-36	37° 01.14666894' N	112° 01.50773022' W
Drop Point	DP-41	36° 54.70255932' N	112° 07.49656644' W
Drop Point	DP-45	36° 55.62882114' N	112° 05.80395942' W
Helibase	Kanab Helibase	37° 00.61103962' N	112° 31.84308964' W
Helispot	H-10	36° 57.82140761' N	112° 07.34576094' W
Helispot	H-20	37° 02.15318670' N	112° 05.48865786' W
Incident Command Post	Pine Hollow ICP	37° 02.30814030' N	112° 31.66742934' W
Repeater	Buckskin Repeater	37° 05.57009508' N	112° 00.35921748' W
Repeater	CMD 7	37° 03.58833354' N	112° 31.12868538' W
Repeater	CMD 8	36° 56.94393468' N	112° 00.83307876' W
Repeater	Log Repeater (Hub)	36° 41.98713204' N	112° 12.82027962' W
Value at Risk	Catchment	36° 54.89377938' N	112° 01.12442808' W
Value at Risk	Catchment	36° 55.5295296' N	112° 06.67722834' W
Value at Risk	Catchment	36° 56.64534960' N	112° 08.63263200' W
Value at Risk	Catchment	36° 57.87218136' N	112° 06.64925844' W
Value at Risk	Catchment	36° 58.86390954' N	112° 04.76649708' W
Value at Risk	Catchment	36° 55.29364470' N	112° 06.81268140' W
Value at Risk	Catchment	37° 01.63986342' N	112° 03.76003110' W
Value at Risk	Catchment	36° 59.86663320' N	112° 05.50996020' W
Value at Risk	Coyote Springs Ranch	36° 57.15997968' N	112° 02.16916062' W
Water Source	Cattle Tank	36° 56.14793742' N	112° 08.87273298' W
Water Source	Fold-a-tank	36° 54.74228958' N	112° 07.50391902' W

