
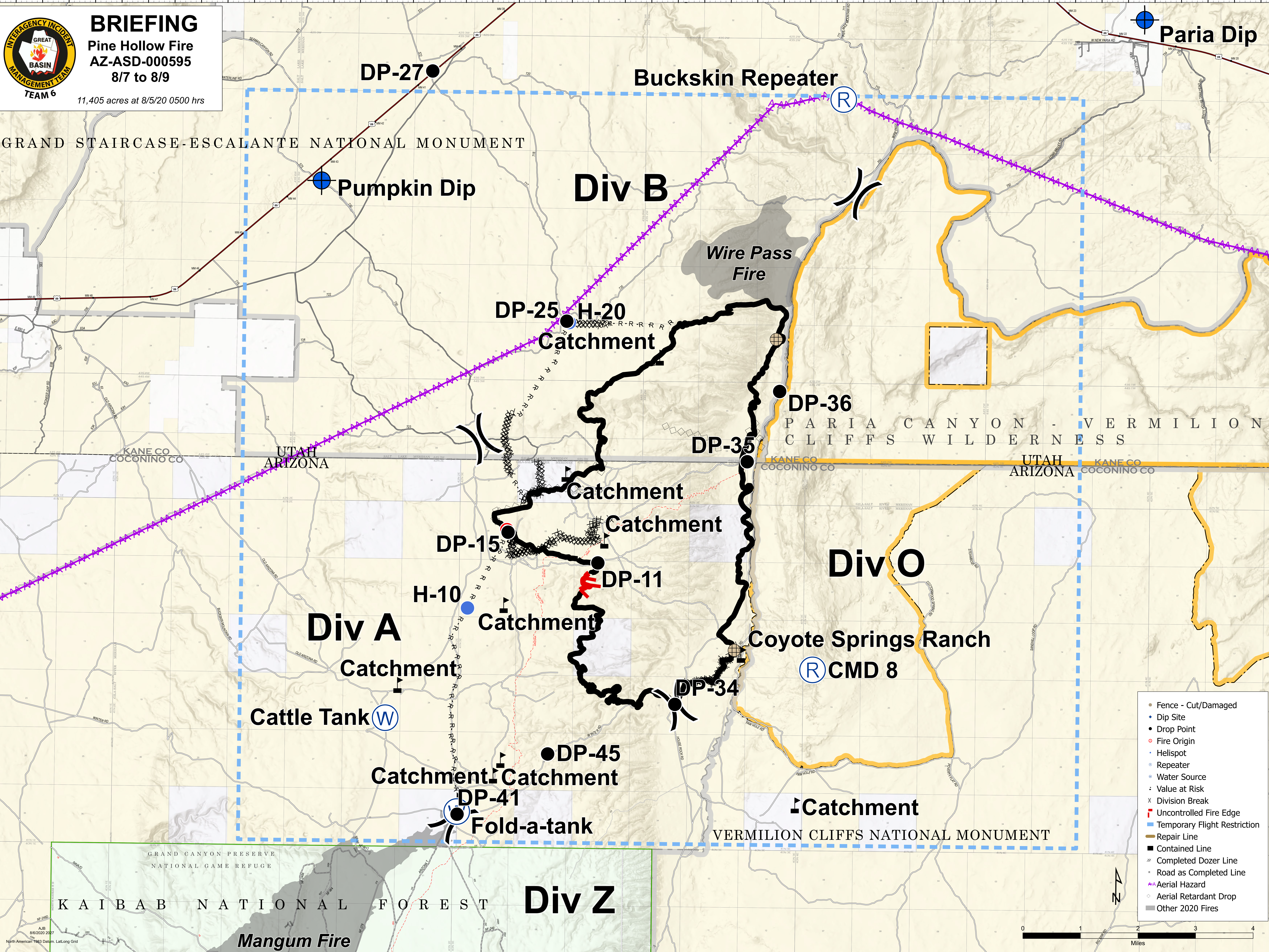
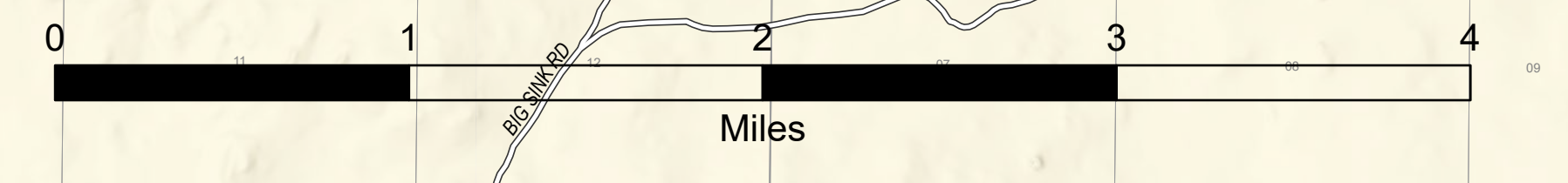


**BRIEFING**  
**Pine Hollow Fire**  
**AZ-ASD-000595**  
**8/7 to 8/9**  
 11,405 acres at 8/5/20 0500 hrs

- Fence - Cut/Damaged
- Dip Site
- Drop Point
- Fire Origin
- Helispot
- Repeater
- Water Source
- Value at Risk
- × Division Break
- ▬ Temporary Flight Restriction
- ▬ Repair Line
- ▬ Contained Line
- ▬ Completed Dozer Line
- ▬ Road as Completed Line
- ▬ Aerial Hazard
- Aerial Retardant Drop
- ▬ Other 2020 Fires



112°16'W 112°15.5'W 112°15'W 112°14.5'W 112°14'W 112°13.5'W 112°13'W 112°12.5'W 112°12'W 112°11.5'W 112°11'W 112°10.5'W 112°10'W 112°9.5'W 112°9'W 112°8.5'W 112°8'W 112°7.5'W 112°7'W 112°6.5'W 112°6.01'W 112°5.5'W 112°5'W 112°4.5'W 112°4'W 112°3.5'W 112°3'W 112°2.5'W 112°2'W 112°1.5'W 112°1'W 112°0.5'W 112°W 111°59.5'W 111°59'W 111°58.5'W 111°58'W 111°57.5'W 111°57'W 111°56.5'W 111°56'W 111°55.5'W 111°55'W 111°54.5'W 111°54'W 111°53.5'W 111°53'W 111°52.5'W