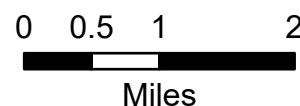


OPERATIONS

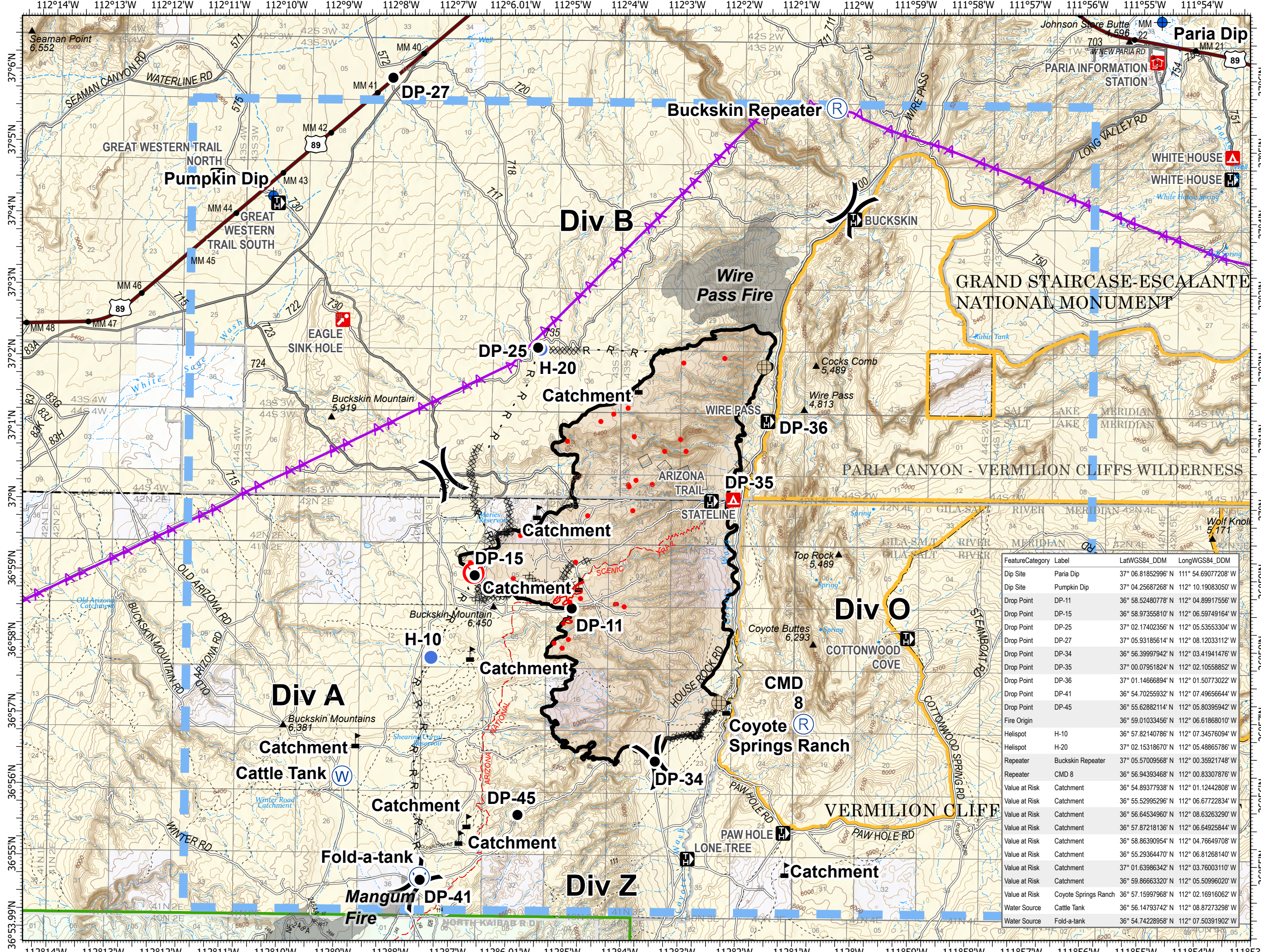
Pine Hollow Fire
AZ-ASD-000595
8/7 to 8/9

11,405 acres at 8/5 1600 hr

- Pine Hollow Fire Area
- Drop Point
- Dip Site
- Fence - Cut/Damaged
- Fire Origin
- Helispot
- Repeater
- Water Source
- Value at Risk
- Division Break
- Contained Line
- Completed Dozer Line
- Road as Completed Line
- Aerial Hazard
- Aerial Retardant Drop
- Temporary Flight Restriction
- Repair Line
- IR Isolated Heat Source
- IR Intense Heat
- IR Scattered Heat
- Other 2020 Fires
- Campground
- Information Center
- Point of Interest
- Trailhead



AJB
8/6/2020 2234
North American 1983 Datum. LatLong Grid



FeatureCategory	Label	LatWGS84_DDM	LongWGS84_DDM
Dip Site	Paria Dip	37° 06.81852996' N	111° 54.6907208' W
Dip Site	Pumpkin Dip	37° 04.25687268' N	112° 10.19083050' W
Drop Point	DP-11	36° 58.52480778' N	112° 04.89917556' W
Drop Point	DP-15	36° 58.97355810' N	112° 06.59749164' W
Drop Point	DP-25	37° 02.17402356' N	112° 05.53553304' W
Drop Point	DP-27	37° 05.93185614' N	112° 08.12033112' W
Drop Point	DP-34	36° 56.39997942' N	112° 03.41941476' W
Drop Point	DP-35	37° 00.07951824' N	112° 02.10558852' W
Drop Point	DP-36	37° 01.14666894' N	112° 01.50773022' W
Drop Point	DP-41	36° 54.70255932' N	112° 07.49656644' W
Drop Point	DP-45	36° 55.62882114' N	112° 05.80395942' W
Fire Origin		36° 59.01033456' N	112° 06.61868010' W
Helispot	H-10	36° 57.82140786' N	112° 07.34576094' W
Helispot	H-20	37° 02.15318670' N	112° 05.48865786' W
Repeater	Buckskin Repeater	37° 05.57009568' N	112° 00.35921748' W
Repeater	CMD 8	36° 56.94393468' N	112° 00.83307876' W
Value at Risk	Catchment	36° 54.89377938' N	112° 01.12442808' W
Value at Risk	Catchment	36° 55.52995296' N	112° 06.67722834' W
Value at Risk	Catchment	36° 56.64534960' N	112° 08.63263290' W
Value at Risk	Catchment	36° 57.87218136' N	112° 06.64925844' W
Value at Risk	Catchment	36° 58.86390954' N	112° 04.76649708' W
Value at Risk	Catchment	36° 55.29364470' N	112° 06.81268140' W
Value at Risk	Catchment	37° 01.63986342' N	112° 03.76003110' W
Value at Risk	Catchment	36° 59.86663320' N	112° 05.50996020' W
Value at Risk	Coyote Springs Ranch	36° 57.15997968' N	112° 02.16916062' W
Water Source	Cattle Tank	36° 56.14793742' N	112° 08.87273298' W
Water Source	Fold-a-tank	36° 54.74228958' N	112° 07.50391902' W