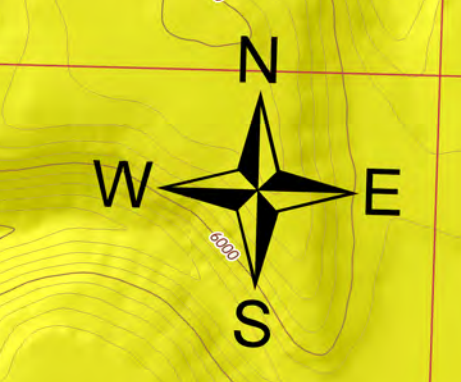


Operations

Poodle
NV-WID-020215
8/17/2020 Day
13,606 Acres at 8/15/2020 2050



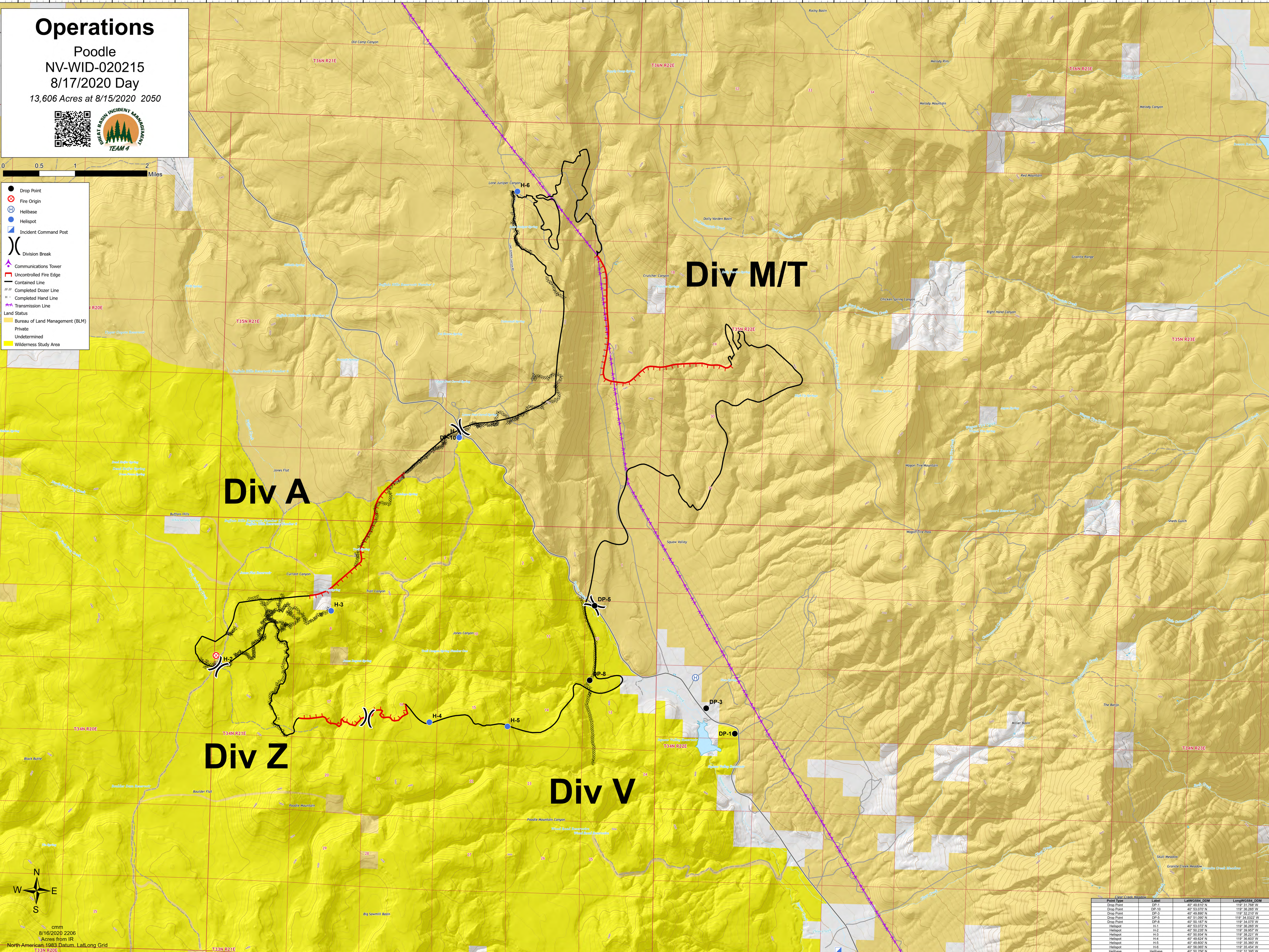
- Drop Point
- ⊗ Fire Origin
- ⊕ Helibase
- Helispot
- ⊕ Incident Command Post
- ⌋ Division Break
- ⊕ Communications Tower
- ▬ Uncontrolled Fire Edge
- ▬ Contained Line
- ▬ Completed Dozer Line
- ▬ Completed Hand Line
- ▬ Transmission Line
- Land Status
 - Bureau of Land Management (BLM)
 - Private
 - Undetermined
 - Wilderness Study Area



cmn
8/16/2020 2206
Acre from IR
North American 1983 Datum, Lat/Long Grid
T33N R20E

119°43'W 119°43'W 119°42.5'W 119°42'W 119°41.5'W 119°41'W 119°40.5'W 119°40'W 119°39.5'W 119°39'W 119°38.5'W 119°38'W 119°37.5'W 119°37'W 119°36.5'W 119°36.01'W 119°35.5'W 119°35'W 119°34.5'W 119°34'W 119°33.5'W 119°33'W 119°32.5'W 119°32'W 119°31.5'W 119°31'W 119°30.5'W 119°30'W 119°29.5'W 119°29'W 119°28.51'W 119°28'W 119°27.5'W 119°27'W 119°26.5'W 119°26'W 119°25.5'W 119°25'W 119°24.5'W 119°24'W 119°23.5'W

40°58'N 40°57.5'N 40°57'N 40°56.5'N 40°56'N 40°55.5'N 40°55'N 40°54.5'N 40°54'N 40°53.99'N 40°53.5'N 40°53'N 40°52.5'N 40°52'N 40°51.5'N 40°51'N 40°50.5'N 40°50'N 40°49.5'N 40°49'N 40°48.5'N 40°48'N 40°47.5'N 40°47'N 40°46.5'N 40°46'N 40°45.5'N 40°45'N 40°44.5'N 40°44'N 40°43.5'N 40°43'N 40°42.5'N 40°42'N 40°41.5'N 40°41'N 40°40.5'N 40°40'N 40°39.5'N 40°39'N 40°38.5'N 40°38'N 40°37.5'N 40°37'N 40°36.5'N 40°36'N 40°35.5'N 40°35'N 40°34.5'N 40°34'N 40°33.5'N 40°33'N 40°32.5'N 40°32'N 40°31.5'N 40°31'N 40°30.5'N 40°30'N 40°29.5'N 40°29'N 40°28.51'N 40°28'N 40°27.5'N 40°27'N 40°26.5'N 40°26'N 40°25.5'N 40°25'N 40°24.5'N 40°24'N 40°23.5'N



Point Type	Label	LatWGS84_DGM	LongWGS84_DGM
Drop Point	DP-1	40° 49.610' N	119° 31.768' W
Drop Point	DP-10	40° 53.070' N	119° 36.260' W
Drop Point	DP-3	40° 49.880' N	119° 34.210' W
Drop Point	DP-5	40° 51.090' N	119° 34.030' W
Drop Point	DP-8	40° 50.180' N	119° 34.070' W
Helispot	H-1	40° 50.070' N	119° 36.260' W
Helispot	H-2	40° 50.230' N	119° 36.850' W
Helispot	H-3	40° 50.934' N	119° 38.221' W
Helispot	H-4	40° 49.824' N	119° 36.800' W
Helispot	H-5	40° 49.600' N	119° 36.360' W
Helispot	H-6	40° 50.060' N	119° 35.454' W
Helibase	H-2	40° 50.250' N	119° 36.250' W