

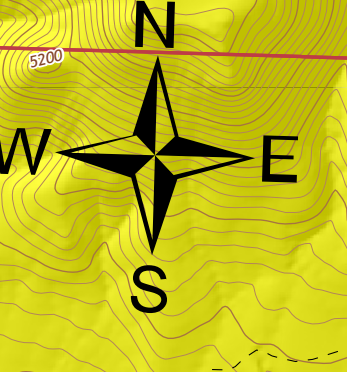
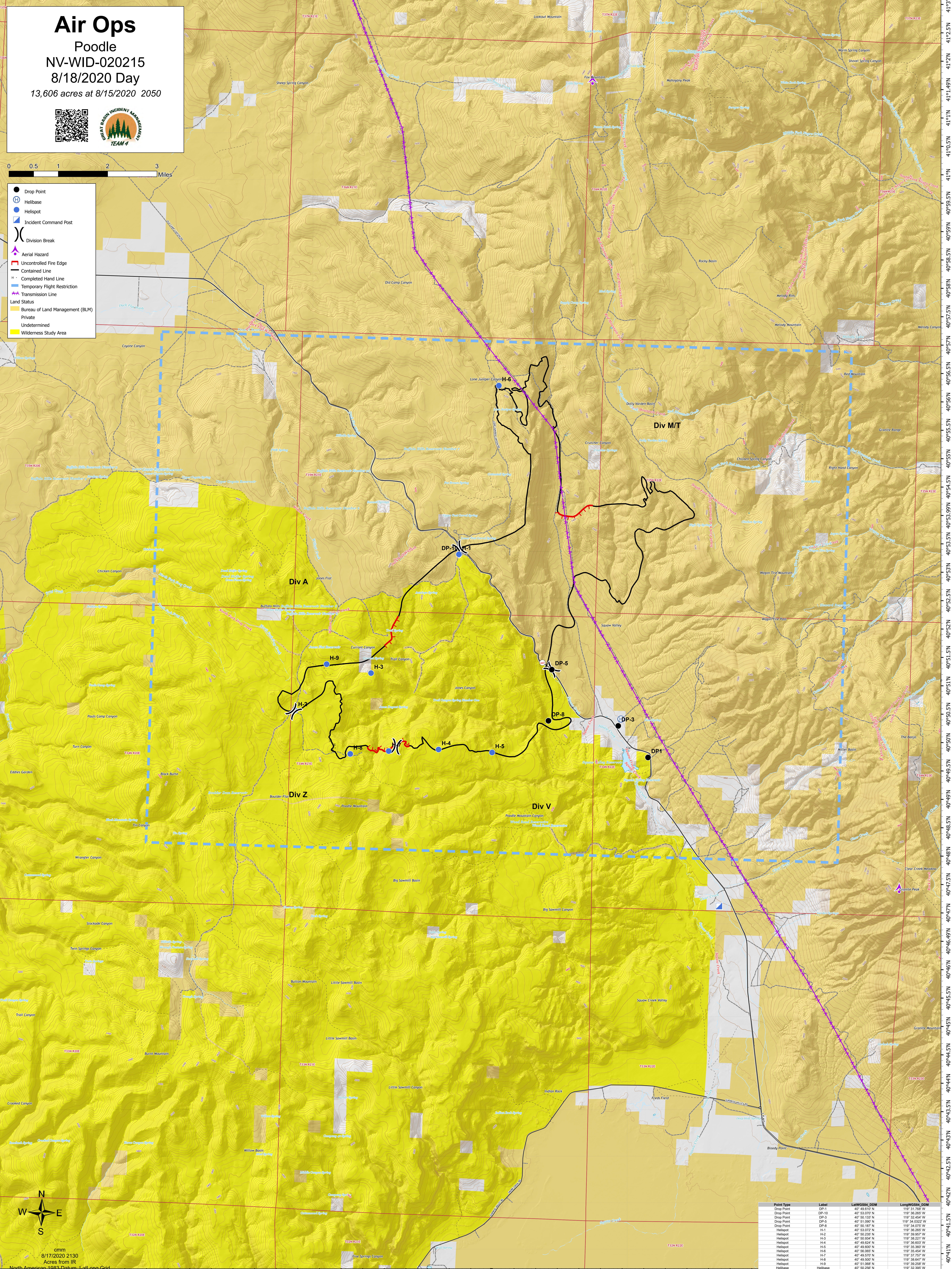
# Air Ops

Poodle  
NV-WID-020215  
8/18/2020 Day

13,606 acres at 8/15/2020 2050



- Drop Point
- ⊕ Helibase
- Helispot
- ⬠ Incident Command Post
- ⌘ Division Break
- ⚠ Aerial Hazard
- ⬜ Uncontrolled Fire Edge
- ⬜ Contained Line
- ⬜ Completed Hand Line
- ⬜ Temporary Flight Restriction
- ⬜ Transmission Line
- Land Status
  - Bureau of Land Management (BLM)
  - Private
  - Undetermined
  - Wilderness Study Area



cmm  
8/17/2020 2130  
Acres from IR

Point Type	Label	LatWGS84_DOM	LongWGS84_DOM
Drop Point	DP-1	40° 49.610' N	119° 31.718' W
Drop Point	DP-10	40° 53.070' N	119° 36.265' W
Drop Point	DP-9	40° 50.133' N	119° 32.454' W
Drop Point	DP-5	40° 51.080' N	119° 34.032' W
Drop Point	DP-8	40° 50.187' N	119° 34.075' W
Helispot	H-1	40° 53.072' N	119° 36.265' W
Helispot	H-2	40° 50.235' N	119° 39.857' W
Helispot	H-3	40° 50.554' N	119° 38.221' W
Helispot	H-4	40° 49.624' N	119° 36.603' W
Helispot	H-5	40° 49.600' N	119° 35.360' W
Helispot	H-6	40° 56.085' N	119° 35.454' W
Helispot	H-7	40° 49.570' N	119° 37.757' W
Helispot	H-8	40° 49.500' N	119° 38.847' W
Helispot	H-9	40° 51.088' N	119° 39.258' W
Helibase	Helibase	40° 50.290' N	119° 32.395' W

119°46'W 119°45'W 119°44'W 119°43'W 119°42'W 119°41'W 119°40'W 119°39'W 119°38'W 119°37'W 119°36.01'W 119°35'W 119°34'W 119°33'W 119°32'W 119°31'W 119°30'W 119°29'W 119°28'W 119°27'W 119°26'W 119°25'W

40°40.5'N 40°41'N 40°41.5'N 40°42'N 40°42.5'N 40°43'N 40°43.5'N 40°44'N 40°44.5'N 40°45'N 40°45.5'N 40°46'N 40°46.5'N 40°47'N 40°47.5'N 40°48'N 40°48.5'N 40°49'N 40°49.5'N 40°50'N 40°50.5'N 40°51'N 40°51.5'N 40°52'N 40°52.5'N 40°53'N 40°53.5'N 40°54'N 40°54.5'N 40°55'N 40°55.5'N 40°56'N 40°56.5'N 40°57'N 40°57.5'N 40°58'N 40°58.5'N 40°59'N 40°59.5'N 41°0'N 41°0.5'N 41°1'N 41°1.5'N 41°2'N 41°2.5'N