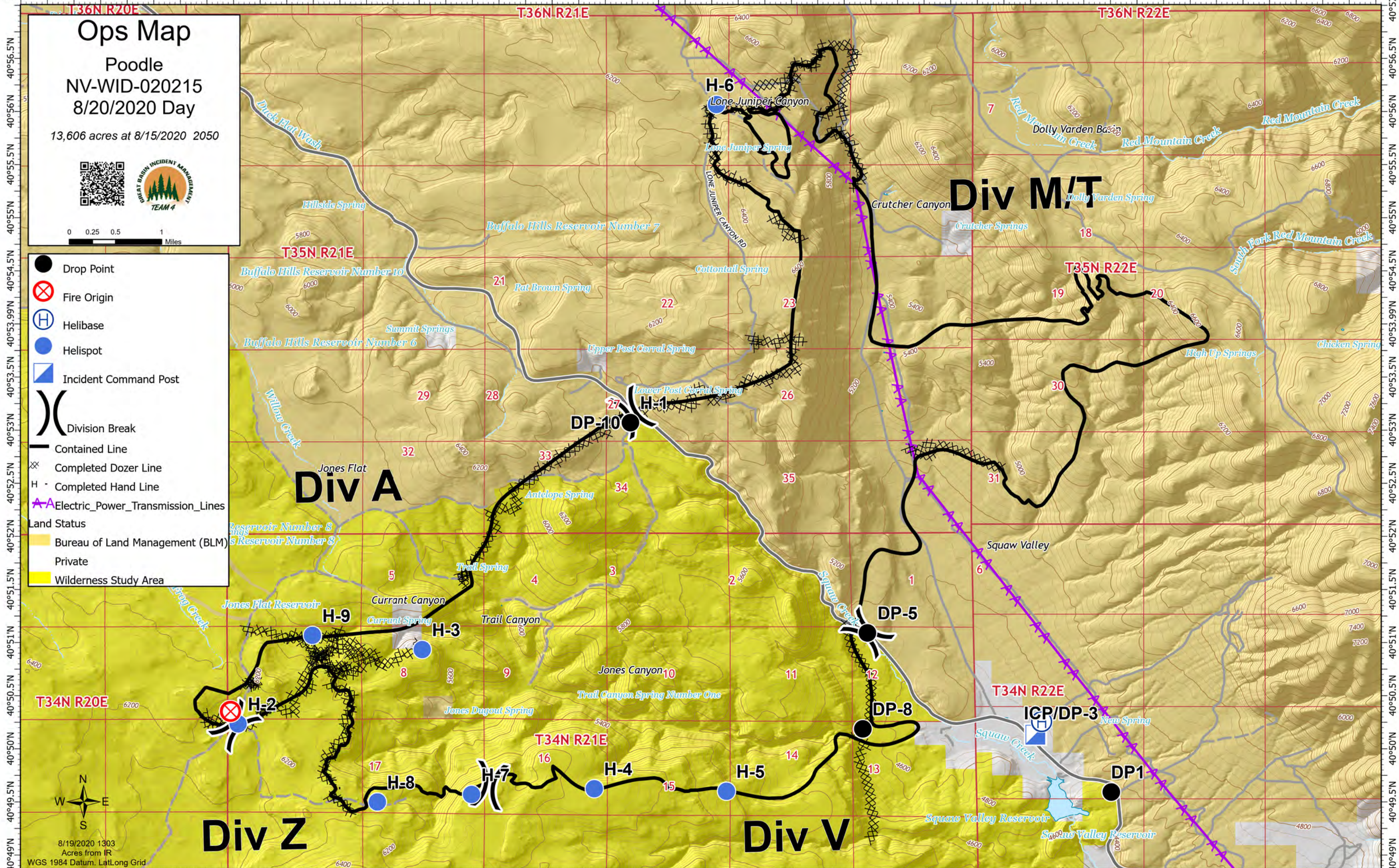




119°42'W 119°41.5'W 119°41'W 119°40.5'W 119°40'W 119°39.5'W 119°39'W 119°38.5'W 119°38'W 119°37.5'W 119°37'W 119°36.5'W 119°36.01'W 119°35.5'W 119°35'W 119°34.5'W 119°34'W 119°33.5'W 119°33'W 119°32.5'W 119°32'W 119°31.5'W 119°31'W 119°30.5'W 119°30'W 119°29.5'W



Ops Map
 Poodle
 NV-WID-020215
 8/20/2020 Day
 13,606 acres at 8/15/2020 2050

0 0.25 0.5 1 Miles

- Drop Point
- ⊗ Fire Origin
- Ⓜ Helibase
- Helispot
- ▢ Incident Command Post
- ⎓ Division Break
- Contained Line
- ⊗ Completed Dozer Line
- H Completed Hand Line
- ⚡ Electric_Power_Transmission_Lines
- Land Status
- Bureau of Land Management (BLM)
- Private
- Wilderness Study Area



8/19/2020 1303
 Acres from IR
 WGS 1984 Datum, LatLong Grid

119°42'W 119°41.5'W 119°41'W 119°40.5'W 119°40'W 119°39.5'W 119°39'W 119°38.5'W 119°38'W 119°37.5'W 119°37'W 119°36.5'W 119°36.01'W 119°35.5'W 119°35'W 119°34.5'W 119°34'W 119°33.5'W 119°33'W 119°32.5'W 119°32'W 119°31.5'W 119°31'W 119°30.5'W 119°30'W 119°29.5'W