

115°31'0"W 115°30'0"W 115°29'0"W 115°28'0"W 115°27'0"W 115°26'0"W 115°25'0"W 115°24'0"W 115°23'0"W 115°22'0"W 115°21'0"W 115°20'0"W 115°19'0"W 115°18'0"W 115°17'0"W 115°16'0"W 115°15'0"W 115°14'0"W

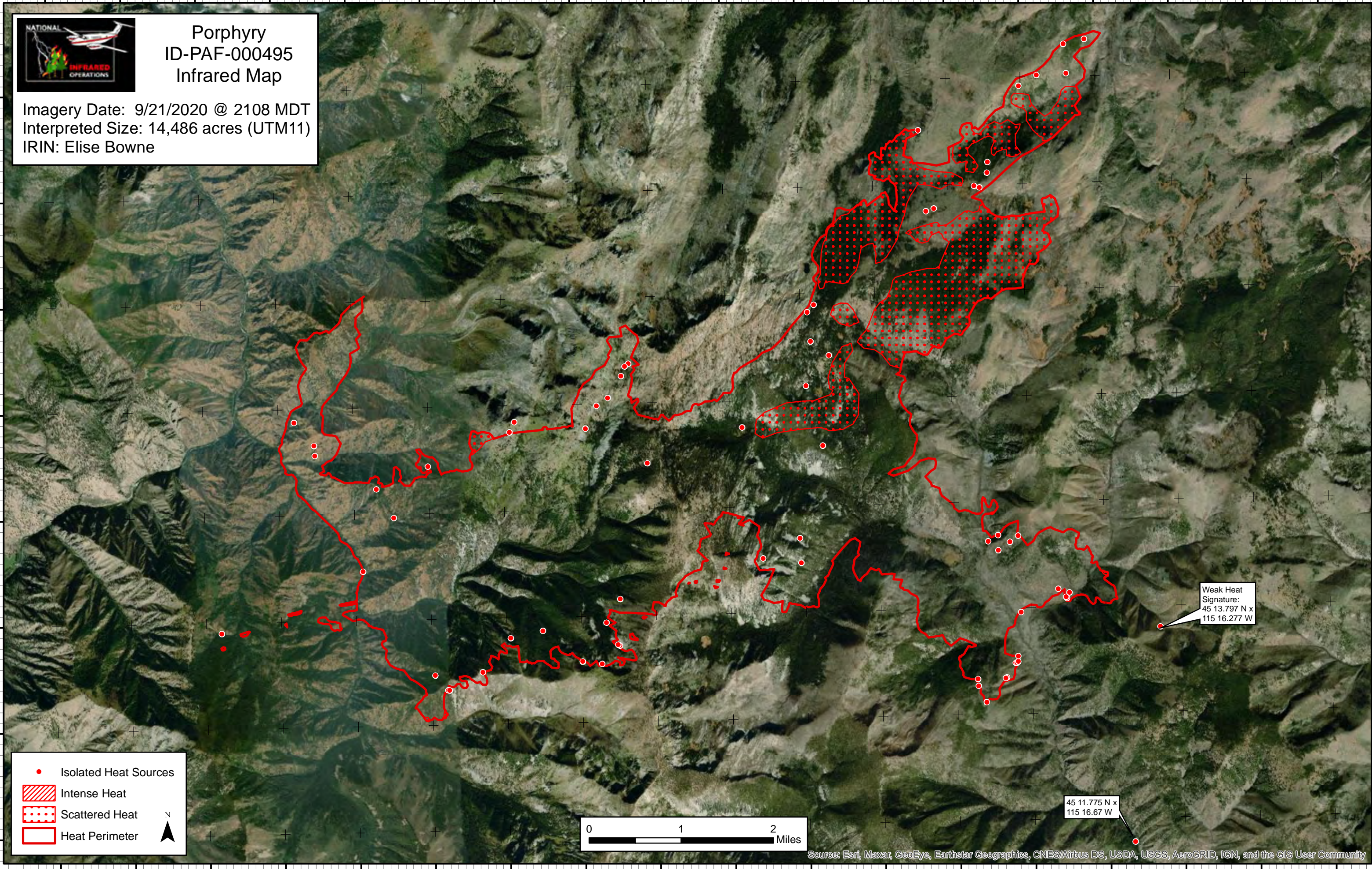


Porphyry ID-PAF-000495 Infrared Map

Imagery Date: 9/21/2020 @ 2108 MDT
Interpreted Size: 14,486 acres (UTM11)
IRIN: Elise Bowne

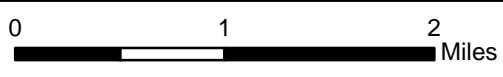
45°19'0"N
45°18'0"N
45°17'0"N
45°16'0"N
45°15'0"N
45°14'0"N
45°13'0"N
45°12'0"N
45°11'0"N
45°10'0"N
45°9'0"N
45°8'0"N
45°7'0"N
45°6'0"N
45°5'0"N
45°4'0"N
45°3'0"N
45°2'0"N
45°1'0"N

45°19'0"N
45°18'0"N
45°17'0"N
45°16'0"N
45°15'0"N
45°14'0"N
45°13'0"N
45°12'0"N
45°11'0"N
45°10'0"N
45°9'0"N
45°8'0"N
45°7'0"N
45°6'0"N
45°5'0"N
45°4'0"N
45°3'0"N
45°2'0"N
45°1'0"N



- Isolated Heat Sources
- Intense Heat
- Scattered Heat
- Heat Perimeter

N
▲



Weak Heat
Signature:
45 13.797 N x
115 16.277 W

45 11.775 N x
115 16.67 W

115°31'0"W 115°30'0"W 115°29'0"W 115°28'0"W 115°27'0"W 115°26'0"W 115°25'0"W 115°24'0"W 115°23'0"W 115°22'0"W 115°21'0"W 115°20'0"W 115°19'0"W 115°18'0"W 115°17'0"W 115°16'0"W 115°15'0"W 115°14'0"W