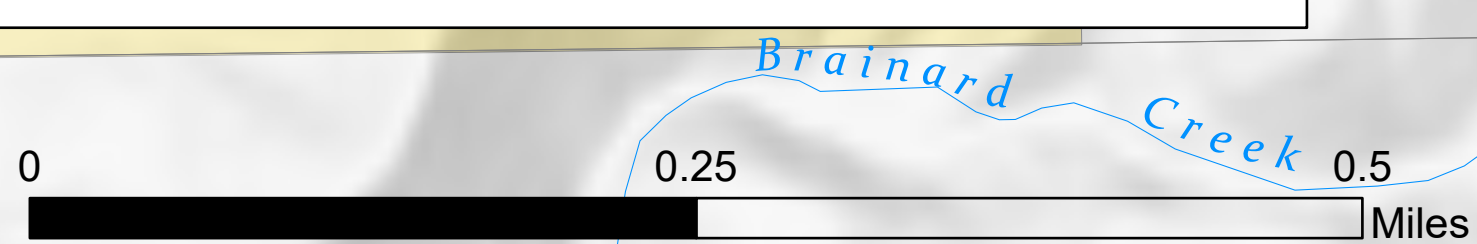


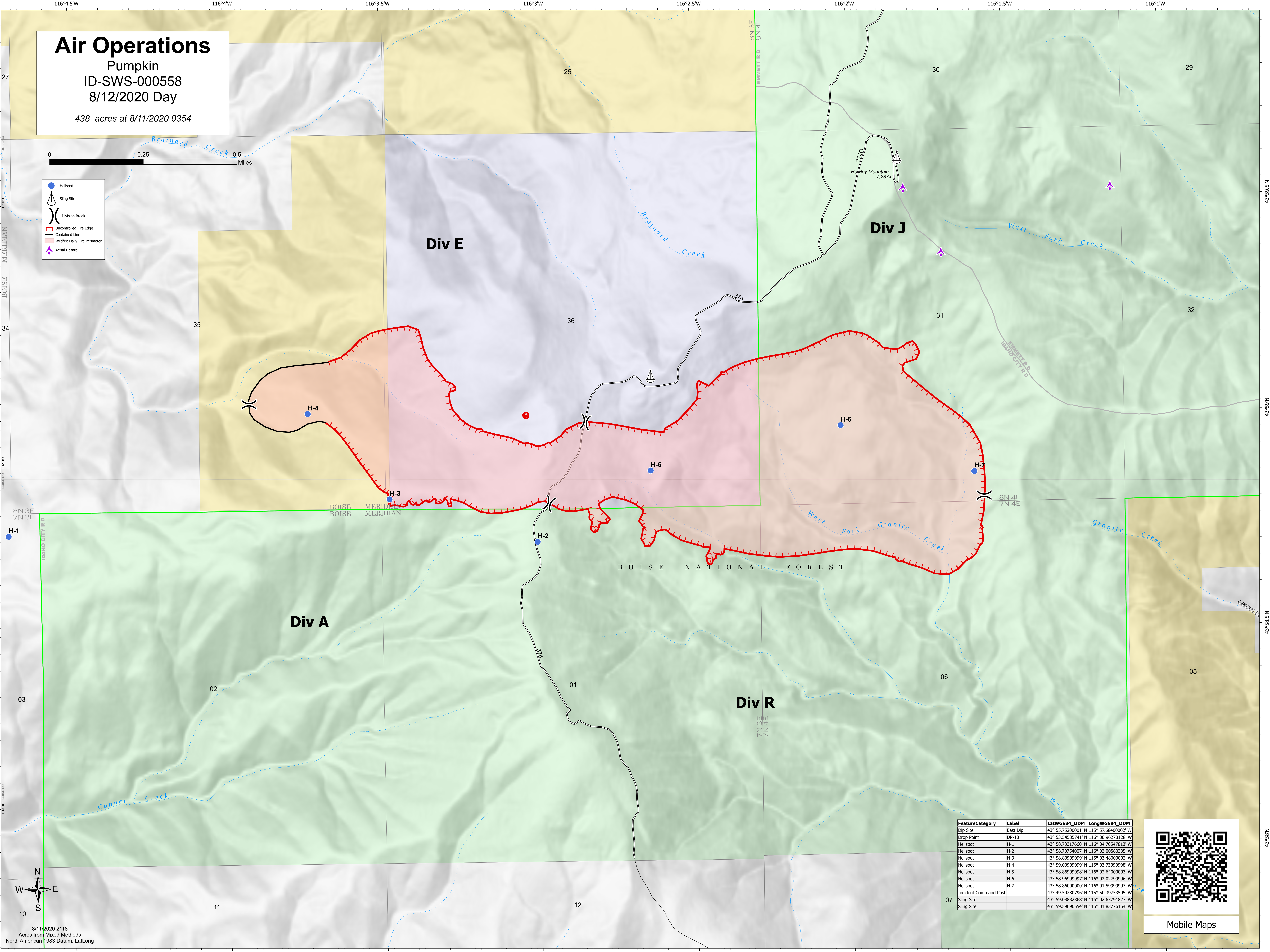
Air Operations

Pumpkin
ID-SWS-000558
8/12/2020 Day

438 acres at 8/11/2020 0354



- Helispot
- ⚓ Sling Site
- () Division Break
- ▬ Uncontrolled Fire Edge
- ▬ Contained Line
- ▬ Wildfire Daily Fire Perimeter
- ▲ Aerial Hazard

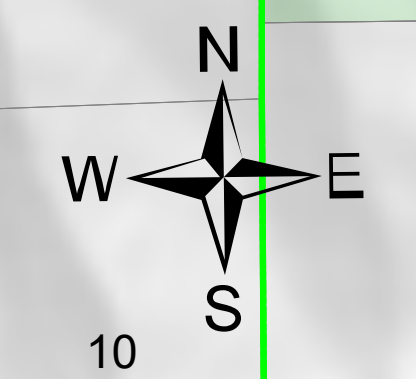


BOISE NATIONAL FOREST

FeatureCategory	Label	LatWGS84_DDM	LongWGS84_DDM
Drop Site	East Dip	43° 55.7520001' N	116° 57.6840002' W
Drop Point	DP-10	43° 53.54535741' N	116° 00.96278128' W
Helispot	H-1	43° 58.73317660' N	116° 04.70547813' W
Helispot	H-2	43° 58.70754007' N	116° 03.00580335' W
Helispot	H-3	43° 58.80999999' N	116° 03.48000002' W
Helispot	H-4	43° 59.00999999' N	116° 03.73999998' W
Helispot	H-5	43° 58.86999998' N	116° 02.64000003' W
Helispot	H-6	43° 58.96999997' N	116° 02.02799996' W
Helispot	H-7	43° 58.86000000' N	116° 01.59999997' W
Incident Command Post		43° 49.59280796' N	116° 50.39753505' W
Sling Site		43° 59.08882368' N	116° 02.63791827' W
Sling Site		43° 59.59090554' N	116° 01.83776164' W



Mobile Maps



8/11/2020 2118
Acres from Mixed Methods
North American 1983 Datum. Lat,Long