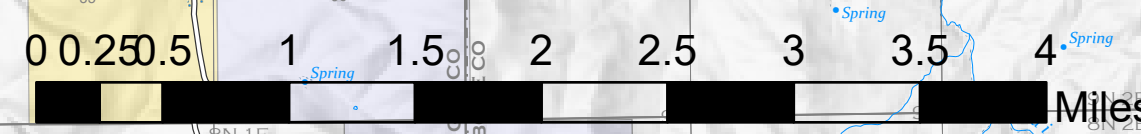


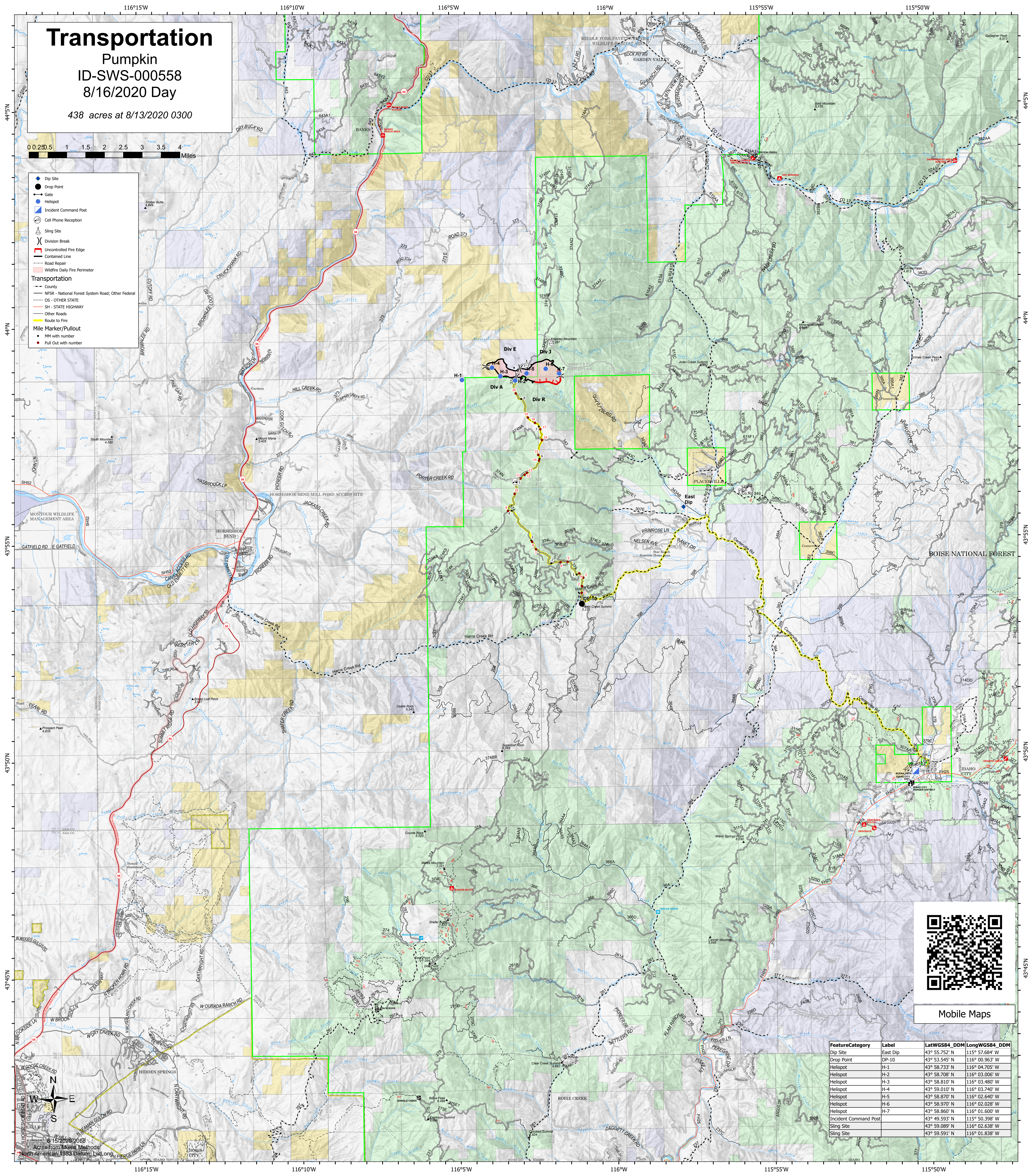
Transportation

Pumpkin
ID-SWS-000558
8/16/2020 Day

438 acres at 8/13/2020 0300



- Dip Site
 - Drop Point
 - Gate
 - Incident Command Post
 - Cell Phone Reception
 - Sling Site
 - Division Break
 - Uncontrolled Fire Edge
 - Contained Line
 - Road Repair
 - Wildfire Daily Fire Perimeter
- Transportation**
- County
 - NFSR - National Forest System Road; Other Federal
 - OS - OTHER STATE
 - SH - STATE HIGHWAY
 - Other Roads
 - Route to Fire
 - Mile Marker/Pullout
 - MM with number
 - Pull Out with number



Mobile Maps

FeatureCategory	Label	LatWGS84_DDM	LongWGS84_DDM
Dip Site	East Dip	43° 55.752' N	115° 57.684' W
Drop Point	DP-10	43° 53.545' N	116° 00.963' W
Helispot	H-1	43° 58.733' N	116° 04.705' W
Helispot	H-2	43° 58.708' N	116° 03.006' W
Helispot	H-3	43° 58.810' N	116° 03.480' W
Helispot	H-4	43° 59.010' N	116° 03.740' W
Helispot	H-5	43° 58.870' N	116° 02.640' W
Helispot	H-6	43° 58.970' N	116° 02.028' W
Helispot	H-7	43° 58.860' N	116° 01.600' W
Incident Command Post		43° 49.593' N	115° 50.398' W
Sling Site		43° 59.089' N	116° 02.638' W
Sling Site		43° 59.591' N	116° 01.838' W

Acres from Mixed Methods
North American 1983 Datum Lat/Long