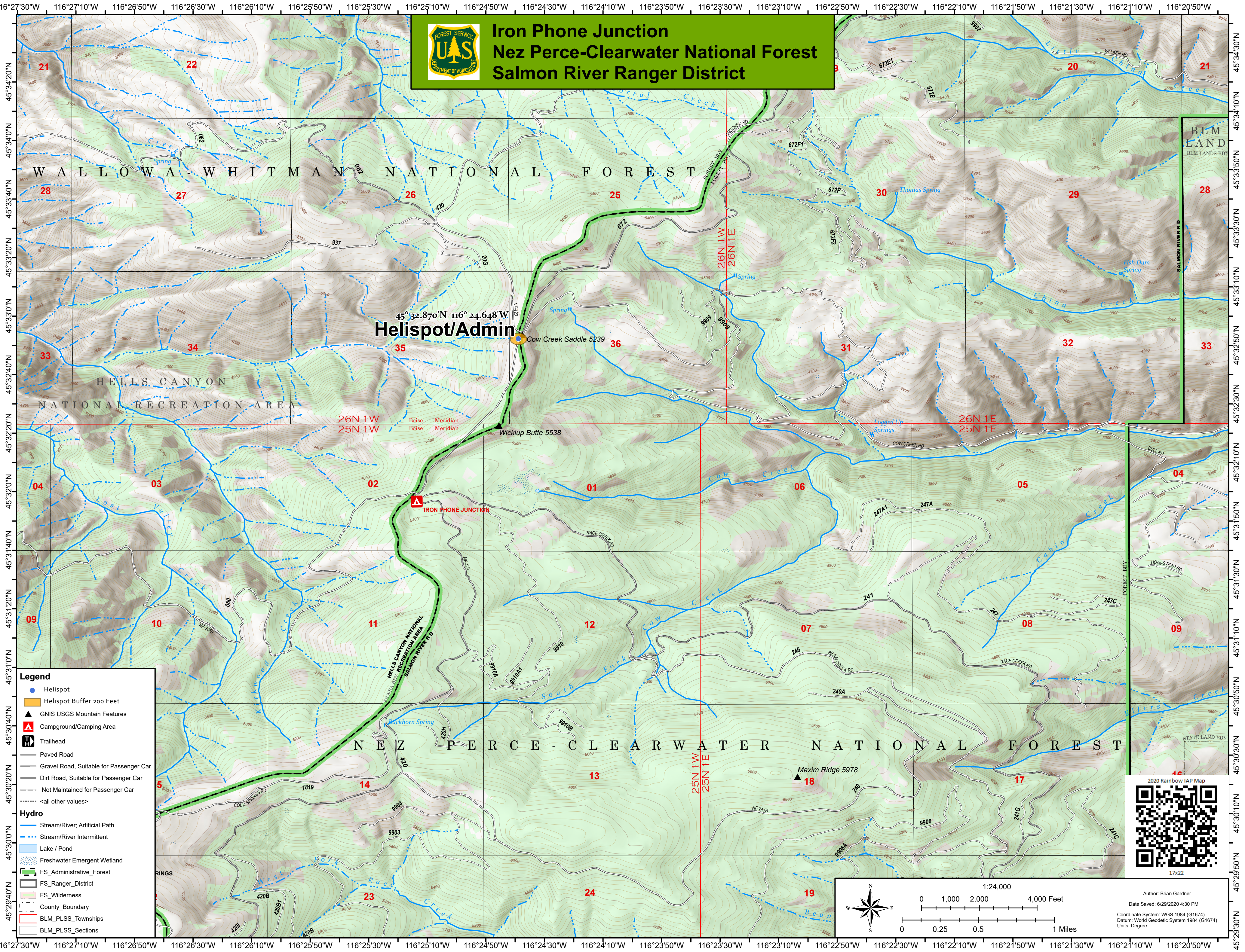




Iron Phone Junction Nez Perce-Clearwater National Forest Salmon River Ranger District

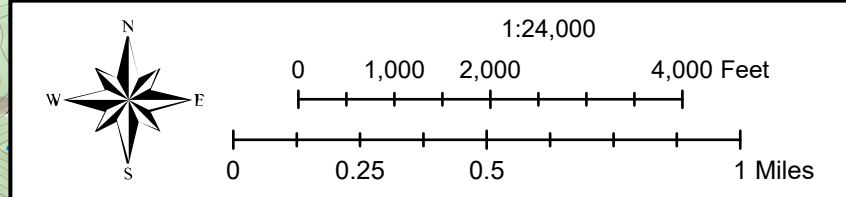


45°32.870'N 116°24.648'W
Helispot/Admin
Cow Creek Saddle 5239

- Legend**
- Helispot
 - Helispot Buffer 200 Feet
 - ▲ GNIS USGS Mountain Features
 - Campground/Camping Area
 - Trailhead
 - Paved Road
 - Gravel Road, Suitable for Passenger Car
 - Dirt Road, Suitable for Passenger Car
 - Not Maintained for Passenger Car
 - <all other values>
- Hydro**
- Stream/River, Artificial Path
 - - - Stream/River Intermittent
 - Lake / Pond
 - Freshwater Emergent Wetland
 - FS_Administrative_Forest
 - FS_Ranger_District
 - FS_Wilderness
 - County_Boundary
 - BLM_PLSS_Townships
 - BLM_PLSS_Sections



2020 Rainbow IAP Map
17x22



Author: Brian Gardner
Date Saved: 6/29/2020 4:30 PM
Coordinate System: WGS 1984 (G1674)
Datum: World Geodetic System 1984 (G1674)
Units: Degree