

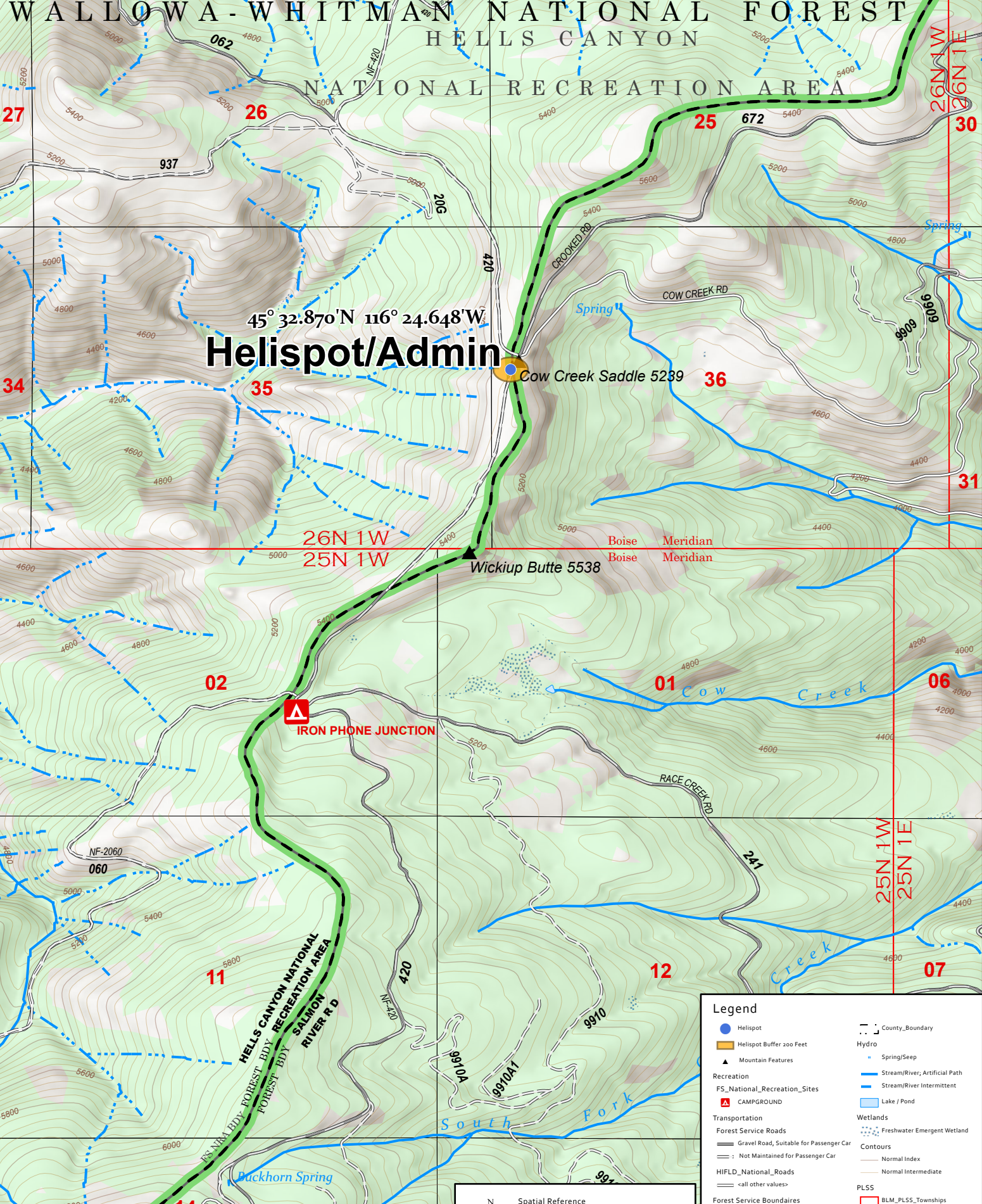
WALLOWA-WHITMAN NATIONAL FOREST HELLS CANYON NATIONAL RECREATION AREA

45° 32.870'N 116° 24.648'W
Helispot/Admin

Cow Creek Saddle 5239

Wickiup Butte 5538

IRON PHONE JUNCTION




Legend

- Helispot
- Helispot Buffer 200 Feet
- ▲ Mountain Features
- ▲ CAMPGROUND
- ▬ Gravel Road, Suitable for Passenger Car
- ▬ Not Maintained for Passenger Car
- ▬ HIFLD_National_Roads
- ▬ <all other values>
- ▬ Forest Service Boundaries
- ▬ FS_Proclaimed_Forest_Grassland
- ▬ FS_Administrative_Forest
- ▬ FS_Ranger_District
- ▬ Geo-Political Boundaries
- ▬ County_Boundary
- Hydro
- Spring/Seep
- ▬ Stream/River; Artificial Path
- ▬ Stream/River Intermittent
- ▬ Lake / Pond
- Wetlands
- ▬ Freshwater Emergent Wetland
- Contours
- ▬ Normal Index
- ▬ Normal Intermediate
- PLSS
- ▬ BLM_PLSS_Townships
- ▬ BLM_PLSS_Sections
- NLCD
- ▬ Conus_2016_NLCD_Poly

Spatial Reference
 Name: WGS 1984 (G1674)
 GCS: WGS 1984 (G1674)
 Datum: World Geodetic System 1984 (G1674)

0 0.25 0.5 Miles



Iron Phone Junction
 Nez Perce-Clearwater National Forest
 Salmon River Ranger District