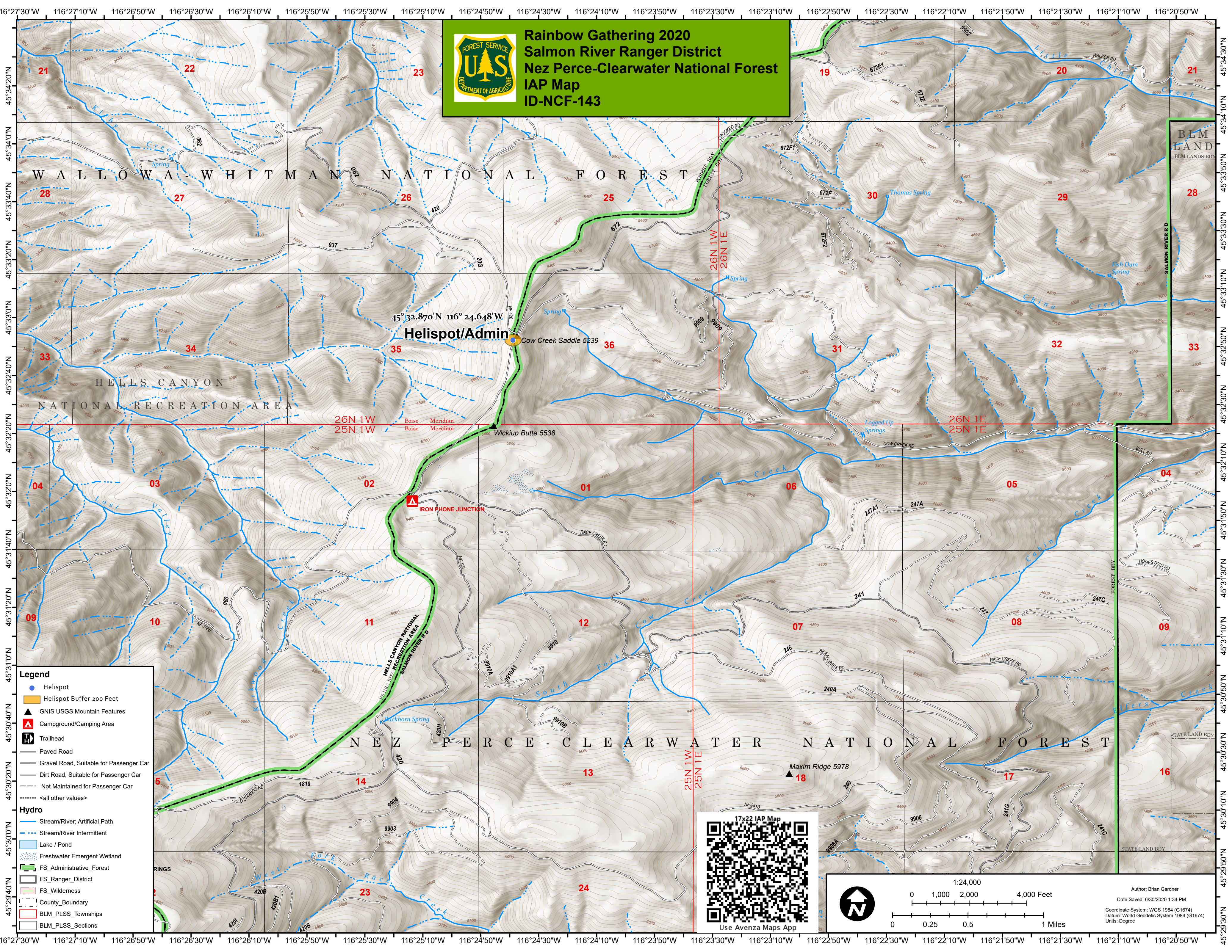


Rainbow Gathering 2020
Salmon River Ranger District
Nez Perce-Clearwater National Forest
IAP Map
ID-NCF-143



45°32.870'N 116°24.648'W
Helispot/Admin
 Cow Creek Saddle 5239

- Legend**
- Helispot
 - Helispot Buffer 200 Feet
 - GNIS USGS Mountain Features
 - Campground/Camping Area
 - Trailhead
 - Paved Road
 - Gravel Road, Suitable for Passenger Car
 - Dirt Road, Suitable for Passenger Car
 - Not Maintained for Passenger Car
 - <all other values>
- Hydro**
- Stream/River; Artificial Path
 - Stream/River Intermittent
 - Lake / Pond
 - Freshwater Emergent Wetland
 - FS_Administrative_Forest
 - FS_Ranger_District
 - FS_Wilderness
 - County_Boundary
 - BLM_PLSS_Townships
 - BLM_PLSS_Sections



1:24,000

0 1,000 2,000 4,000 Feet

0 0.25 0.5 1 Miles

Author: Brian Gardner
 Date Saved: 6/30/2020 1:34 PM
 Coordinate System: WGS 1984 (G1674)
 Datum: World Geodetic System 1984 (G1674)
 Units: Degree