
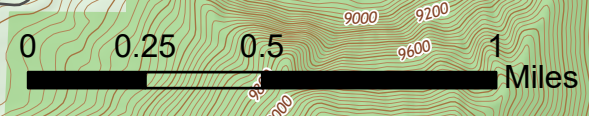


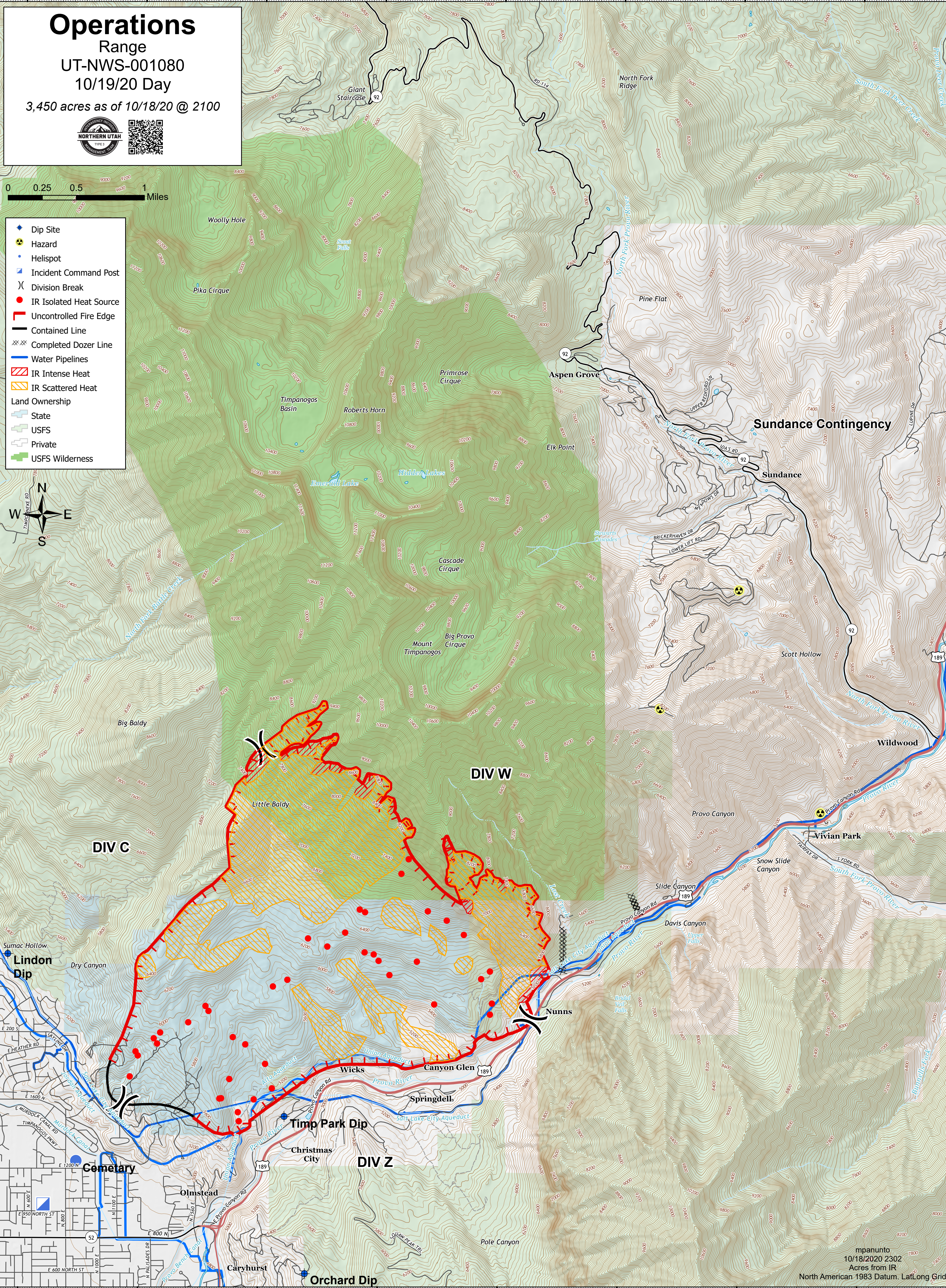
111°41'W 111°40'W 111°39'W 111°38'W 111°37'W 111°36.01'W 111°35'W 111°34'W

Operations

Range
UT-NWS-001080
10/19/20 Day
3,450 acres as of 10/18/20 @ 2100

- ◆ Dip Site
- ⚠ Hazard
- ▲ Helispot
- ⊕ Incident Command Post
- ⌘ Division Break
- IR Isolated Heat Source
- ▬ Uncontrolled Fire Edge
- ▬ Contained Line
- ⊗ Completed Dozer Line
- ▬ Water Pipelines
- ▨ IR Intense Heat
- ▨ IR Scattered Heat
- Land Ownership
- ▭ State
- ▭ USFS
- ▭ Private
- ▭ USFS Wilderness



111°41'W 111°40'W 111°39'W 111°38'W 111°37'W 111°36.01'W 111°35'W 111°34'W

mpanunto
10/18/2020 2302
Acres from IR
North American 1983 Datum, Lat/Long Grid