
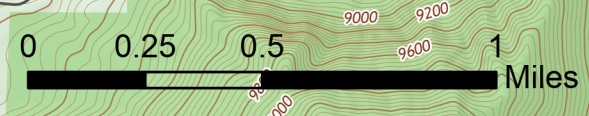


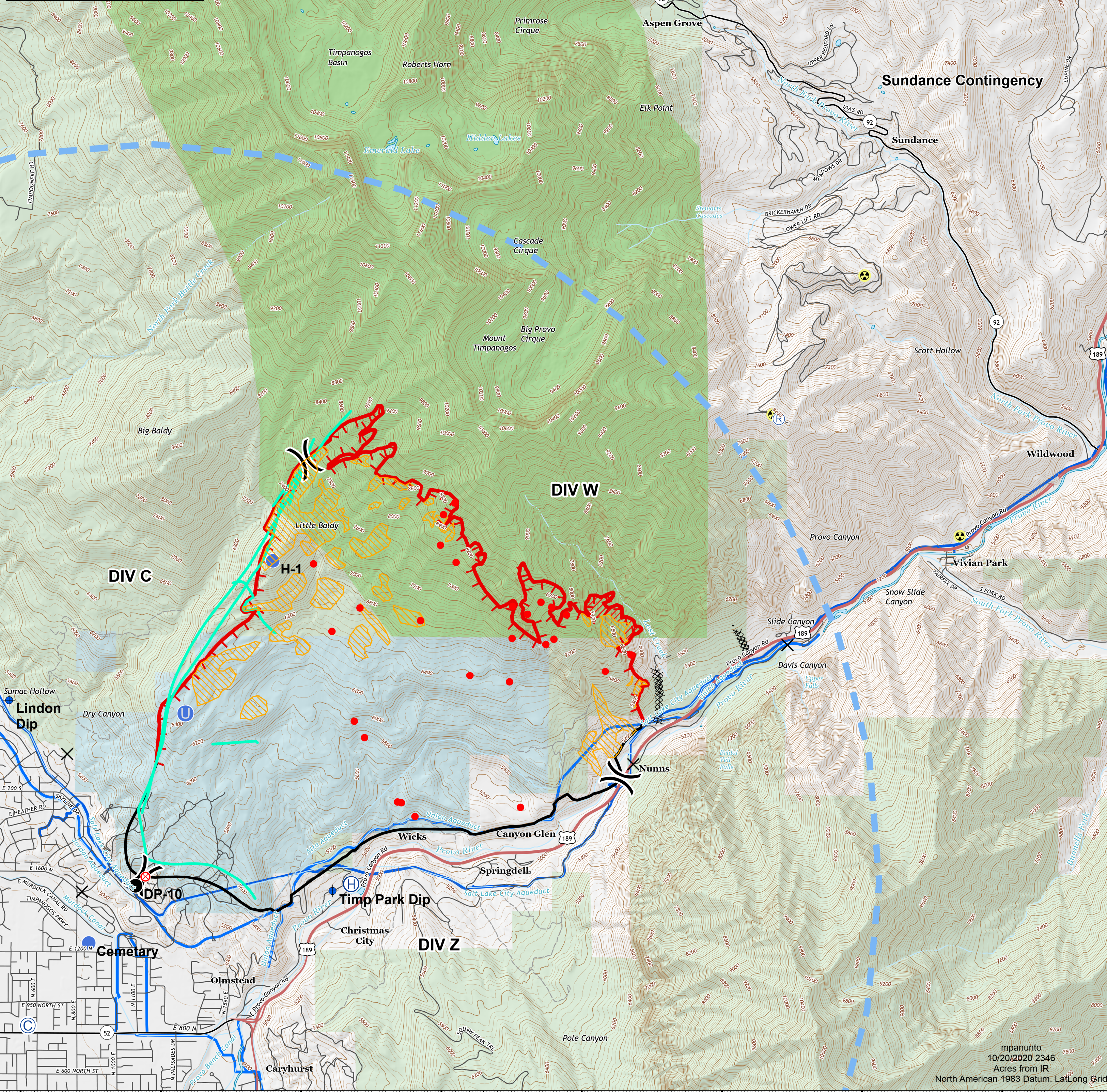
111°41'W 111°40'W 111°39'W 111°38'W 111°37'W 111°36.01'W 111°35'W 111°34'W

Operations

Range
UT-NWS-001080
10/21/20 Day
3,496 acres as of 10/20/20 @ 1920

- | | |
|---------------------------|--------------------------------|
| ● Camp | — Contained Line |
| × Closure | XX Completed Dozer Line |
| ● Dip Site | H Completed Hand Line |
| ● Drop Point | — Aerial Retardant Drop |
| ● Fire Origin | — Temporary Flight Restriction |
| ● Hazard | — Water Pipelines |
| ● Helibase | — IR Intense Heat |
| ● Unimproved Landing Area | — IR Scattered Heat |
| ● Helispot | — Land Ownership |
| ● Repeater | — State |
| — Division Break | — USFS |
| ● IR Isolated Heat Source | — Private |
| — Uncontrolled Fire Edge | — USFS Wilderness |



111°41'W 111°40'W 111°39'W 111°38'W 111°37'W 111°36.01'W 111°35'W 111°34'W

mpanunto
10/20/2020 2346
Acres from IR
North American 1983 Datum, Lat/Long Grid