

111°41'W 111°40'W 111°39'W 111°38'W 111°37'W 111°36.01'W 111°35'W 111°34'W

Operations

Range

UT-NWS-001080

10/21/20 Day

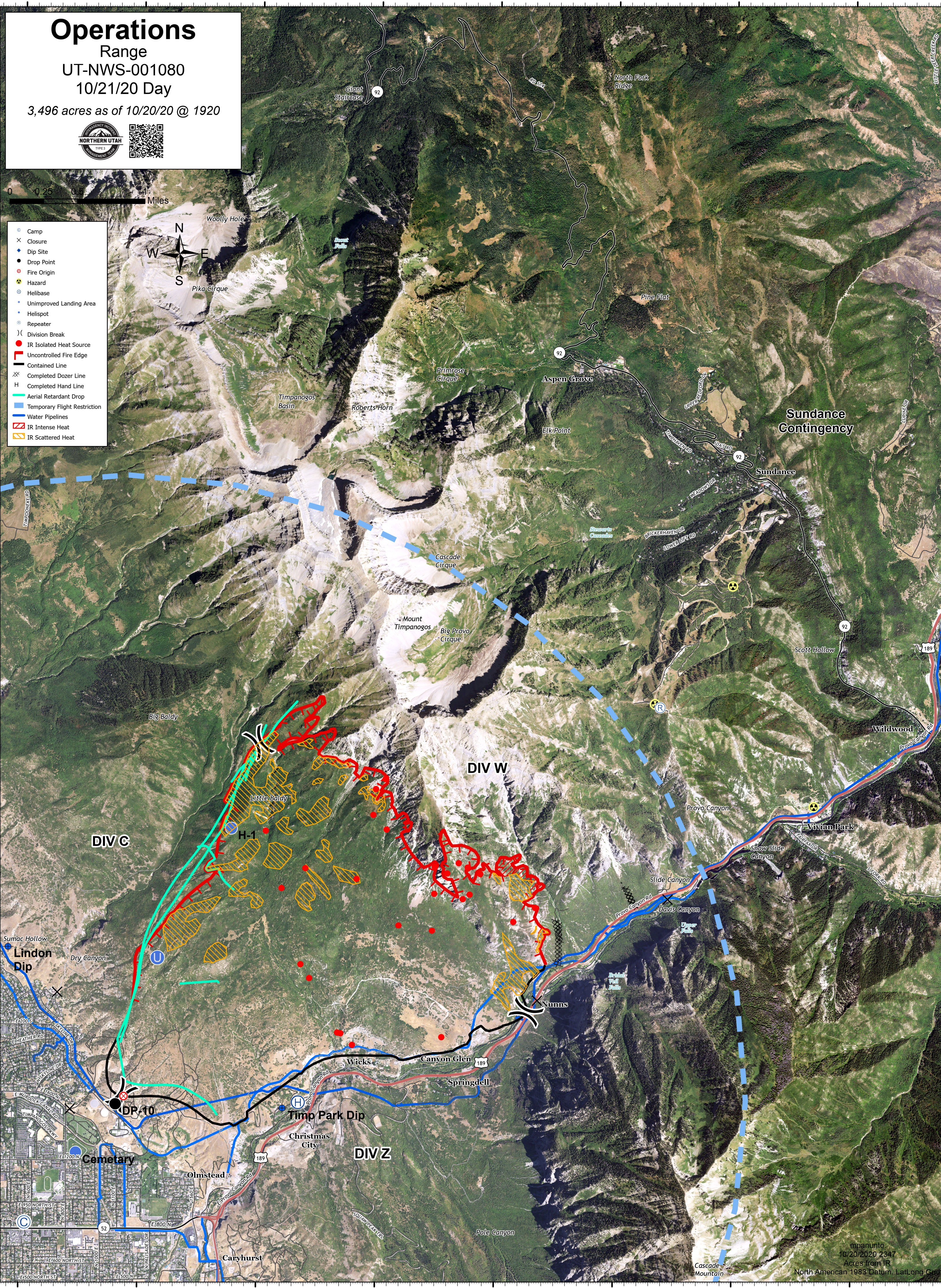
3,496 acres as of 10/20/20 @ 1920



0 0.25 0.5 Miles



- Camp
- ✕ Closure
- Dip Site
- Drop Point
- Fire Origin
- ⚠ Hazard
- Helibase
- Unimproved Landing Area
- Helispot
- Repeater
-) Division Break
- IR Isolated Heat Source
- ▬ Uncontrolled Fire Edge
- ▬ Contained Line
- ⊗ Completed Dozer Line
- H Completed Hand Line
- ▬ Aerial Retardant Drop
- ▬ Temporary Flight Restriction
- ▬ Water Pipelines
- ▭ IR Intense Heat
- ▭ IR Scattered Heat



mpanunto
10/20/2020 2347
Acres from IR
North American 1983 Datum, LatLong Grid

111°41'W 111°40'W 111°39'W 111°38'W 111°37'W 111°36.01'W 111°35'W 111°34'W