
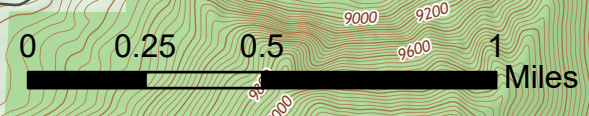


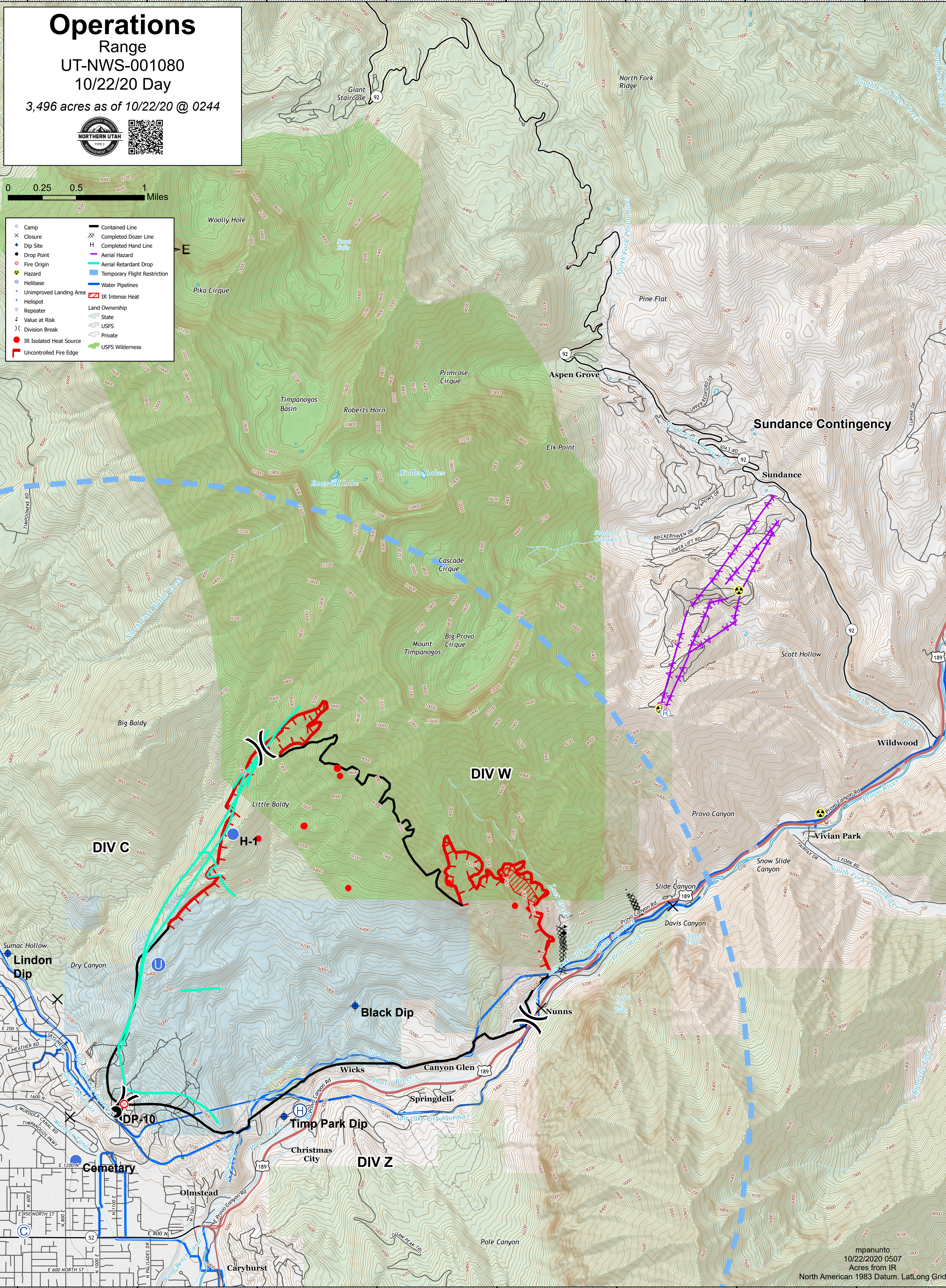
111°41'W 111°40'W 111°39'W 111°38'W 111°37'W 111°36.01'W 111°35'W 111°34'W

Operations

Range
UT-NWS-001080
10/22/20 Day
3,496 acres as of 10/22/20 @ 0244

- | | |
|---------------------------|--------------------------------|
| ● Camp | — Contained Line |
| × Closure | XX Completed Dozer Line |
| ● Dip Site | H Completed Hand Line |
| ● Drop Point | — Aerial Hazard |
| ● Fire Origin | — Aerial Retardant Drop |
| ● Hazard | — Temporary Flight Restriction |
| ● Helibase | — Water Pipelines |
| ● Unimproved Landing Area | — IR Intense Heat |
| ● Helispot | — Land Ownership |
| ● Repeater | — State |
| ● Value at Risk | — USFS |
| — Division Break | — Private |
| ● IR Isolated Heat Source | — USFS Wilderness |
| — Uncontrolled Fire Edge | |



111°41'W 111°40'W 111°39'W 111°38'W 111°37'W 111°36.01'W 111°35'W 111°34'W