

111°41'W 111°40'W 111°39'W 111°38'W 111°37'W 111°36.01'W 111°35'W 111°34'W

Operations

Range

UT-NWS-001080

10/22/20 Day

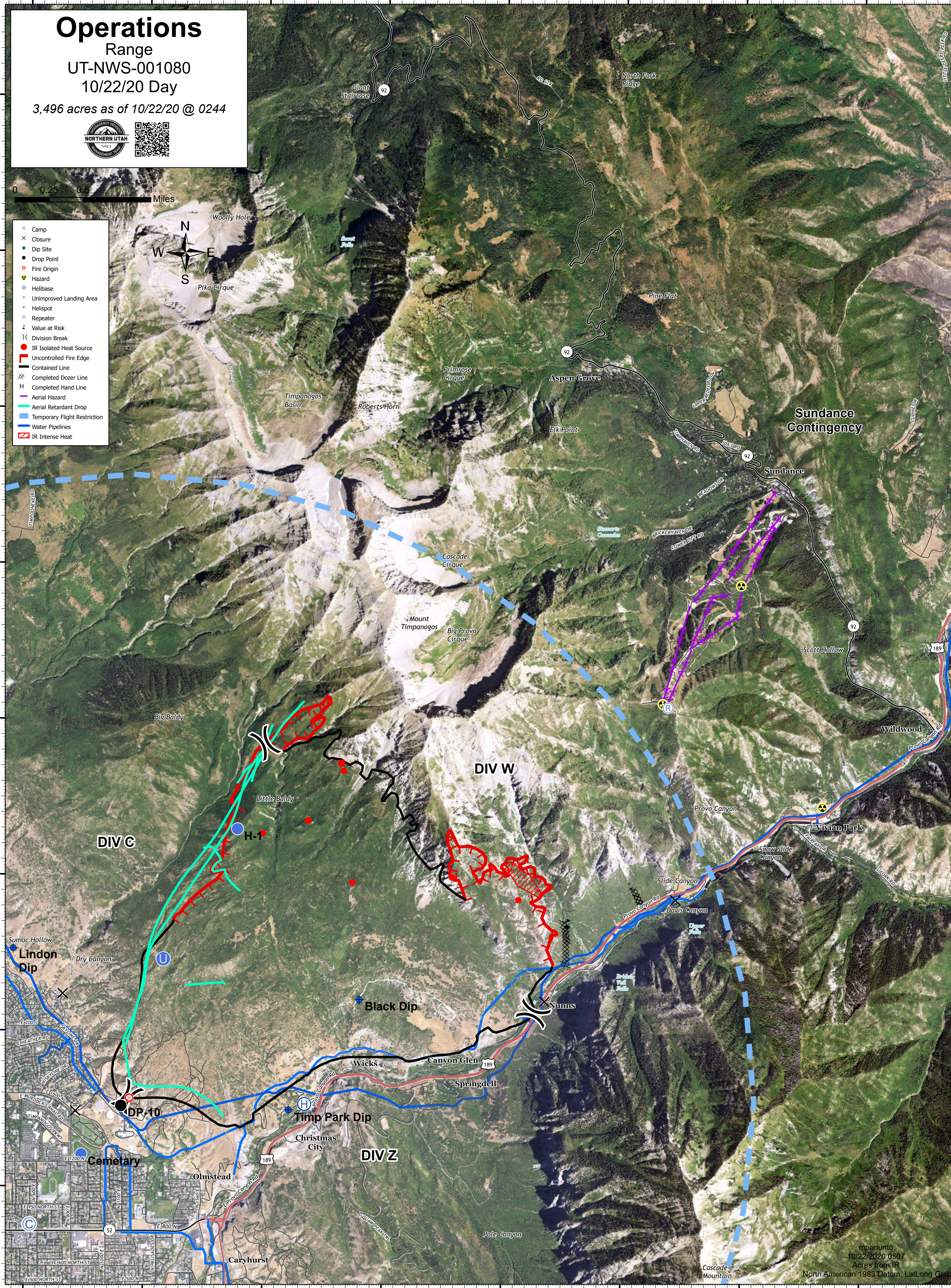
3,496 acres as of 10/22/20 @ 0244



0 0.25 0.5 1 Miles



- Camp
- × Closure
- ◆ Dip Site
- Drop Point
- Fire Origin
- ⚠ Hazard
- Helibase
- Unimproved Landing Area
- Helispot
- Repeater
- ⚡ Value at Risk
- ⎓ Division Break
- IR Isolated Heat Source
- ▬ Uncontrolled Fire Edge
- ▬ Contained Line
- ▬ Completed Dozer Line
- ▬ Completed Hand Line
- ▬ Aerial Hazard
- ▬ Aerial Retardant Drop
- ▬ Temporary Flight Restriction
- ▬ Water Pipelines
- ▬ IR Intense Heat



111°41'W 111°40'W 111°39'W 111°38'W 111°37'W 111°36.01'W 111°35'W 111°34'W