
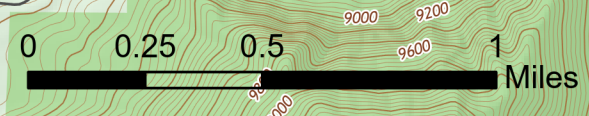


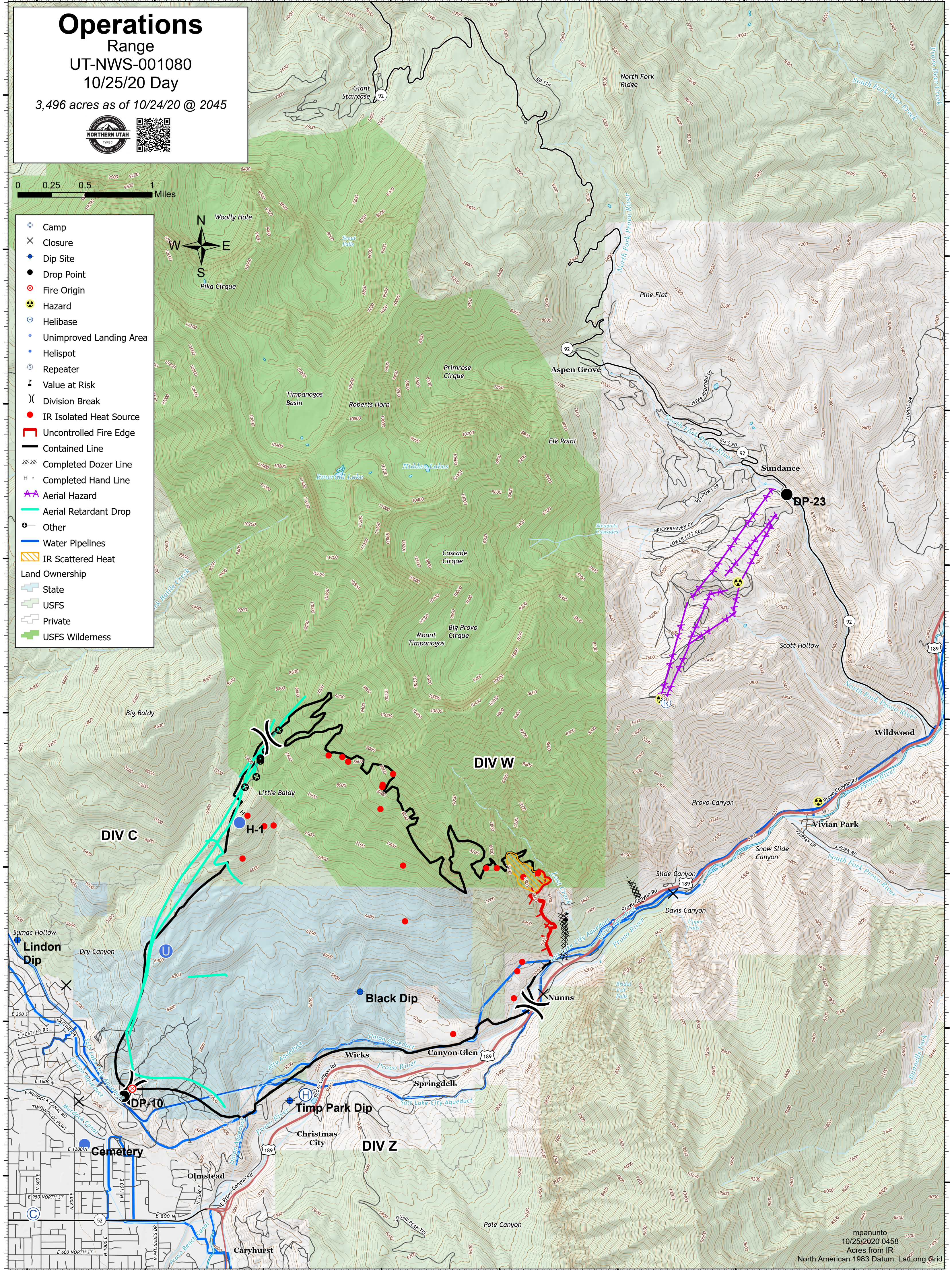
111°41'W 111°40'W 111°39'W 111°38'W 111°37'W 111°36.01'W 111°35'W 111°34'W

# Operations

Range  
UT-NWS-001080  
10/25/20 Day  
3,496 acres as of 10/24/20 @ 2045

- Camp
- × Closure
- ◆ Dip Site
- Drop Point
- ⊗ Fire Origin
- ☠ Hazard
- Ⓢ Helibase
- Unimproved Landing Area
- Helispot
- Ⓡ Repeater
- ⚠ Value at Risk
- ) Division Break
- IR Isolated Heat Source
- ▬ Uncontrolled Fire Edge
- ▬ Contained Line
- XX Completed Dozer Line
- H Completed Hand Line
- ▲ Aerial Hazard
- ▬ Aerial Retardant Drop
- ⊙ Other
- ▬ Water Pipelines
- ▬ IR Scattered Heat
- Land Ownership
- ▬ State
- ▬ USFS
- ▬ Private
- ▬ USFS Wilderness



111°41'W 111°40'W 111°39'W 111°38'W 111°37'W 111°36.01'W 111°35'W 111°34'W