

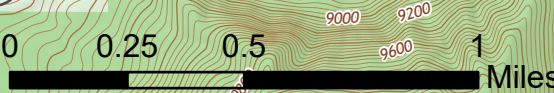
111°41'W 111°40'W 111°39'W 111°38'W 111°37'W 111°36.01'W 111°35'W 111°34'W

Operations

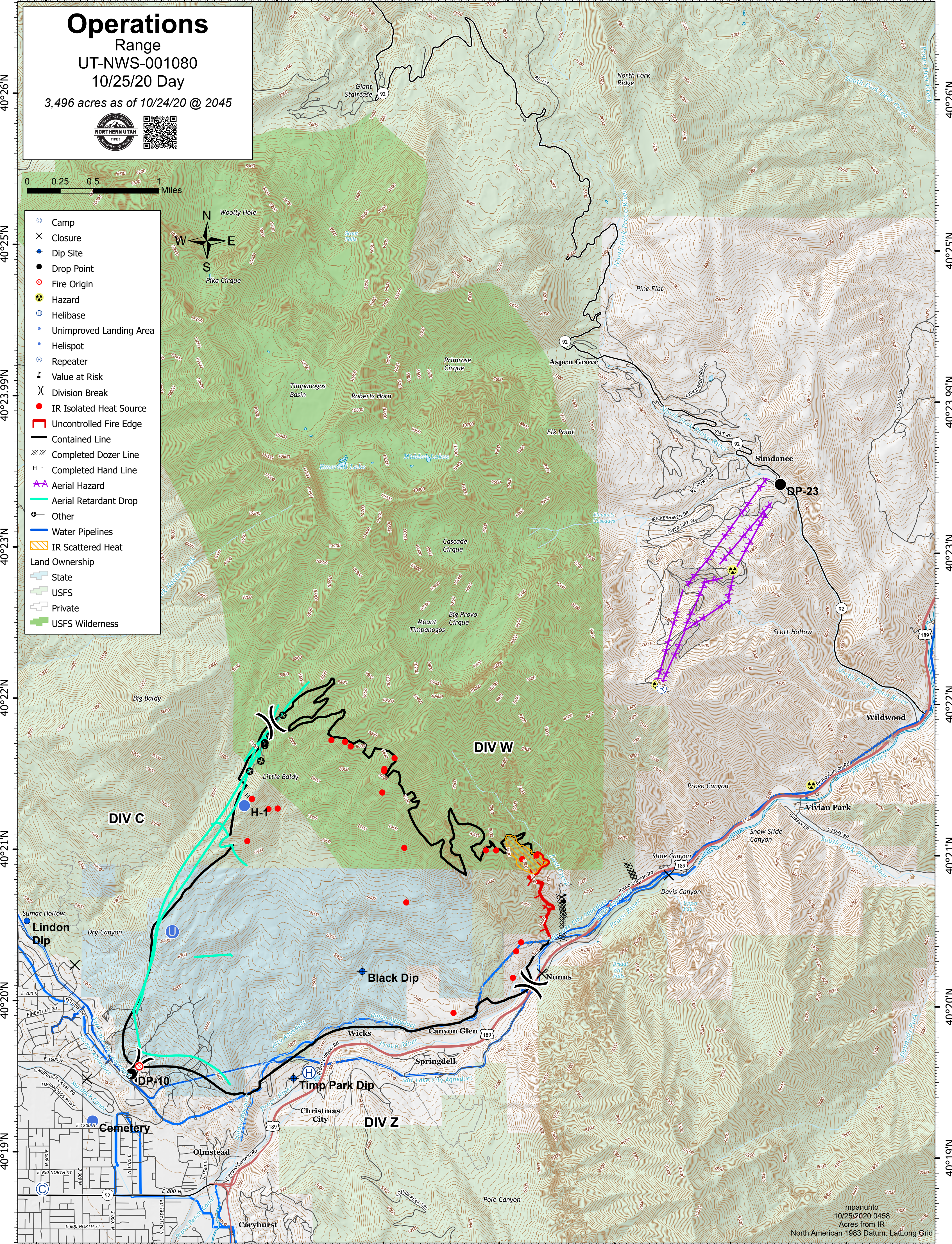
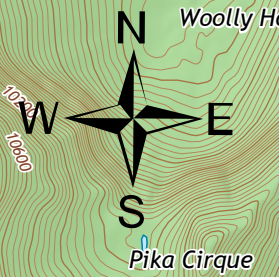
Range
UT-NWS-001080

10/25/20 Day

3,496 acres as of 10/24/20 @ 2045



- Camp
 - Closure
 - Dip Site
 - Drop Point
 - Fire Origin
 - Hazard
 - Helibase
 - Unimproved Landing Area
 - Helispot
 - Repeater
 - Value at Risk
 - Division Break
 - IR Isolated Heat Source
 - Uncontrolled Fire Edge
 - Contained Line
 - Completed Dozer Line
 - Completed Hand Line
 - Aerial Hazard
 - Aerial Retardant Drop
 - Other
 - Water Pipelines
 - IR Scattered Heat
- Land Ownership
- State
 - USFS
 - Private
 - USFS Wilderness



40°26'N
40°25'N
40°23.99'N
40°23'N
40°22'N
40°21'N
40°20'N
40°19'N

40°26'N
40°25'N
40°23.99'N
40°23'N
40°22'N
40°21'N
40°20'N
40°19'N

111°41'W 111°40'W 111°39'W 111°38'W 111°37'W 111°36.01'W 111°35'W 111°34'W