

111°41'W 111°40'W 111°39'W 111°38'W 111°37'W 111°36.01'W 111°35'W 111°34'W

Operations

Range

UT-NWS-001080

10/25/20 Day

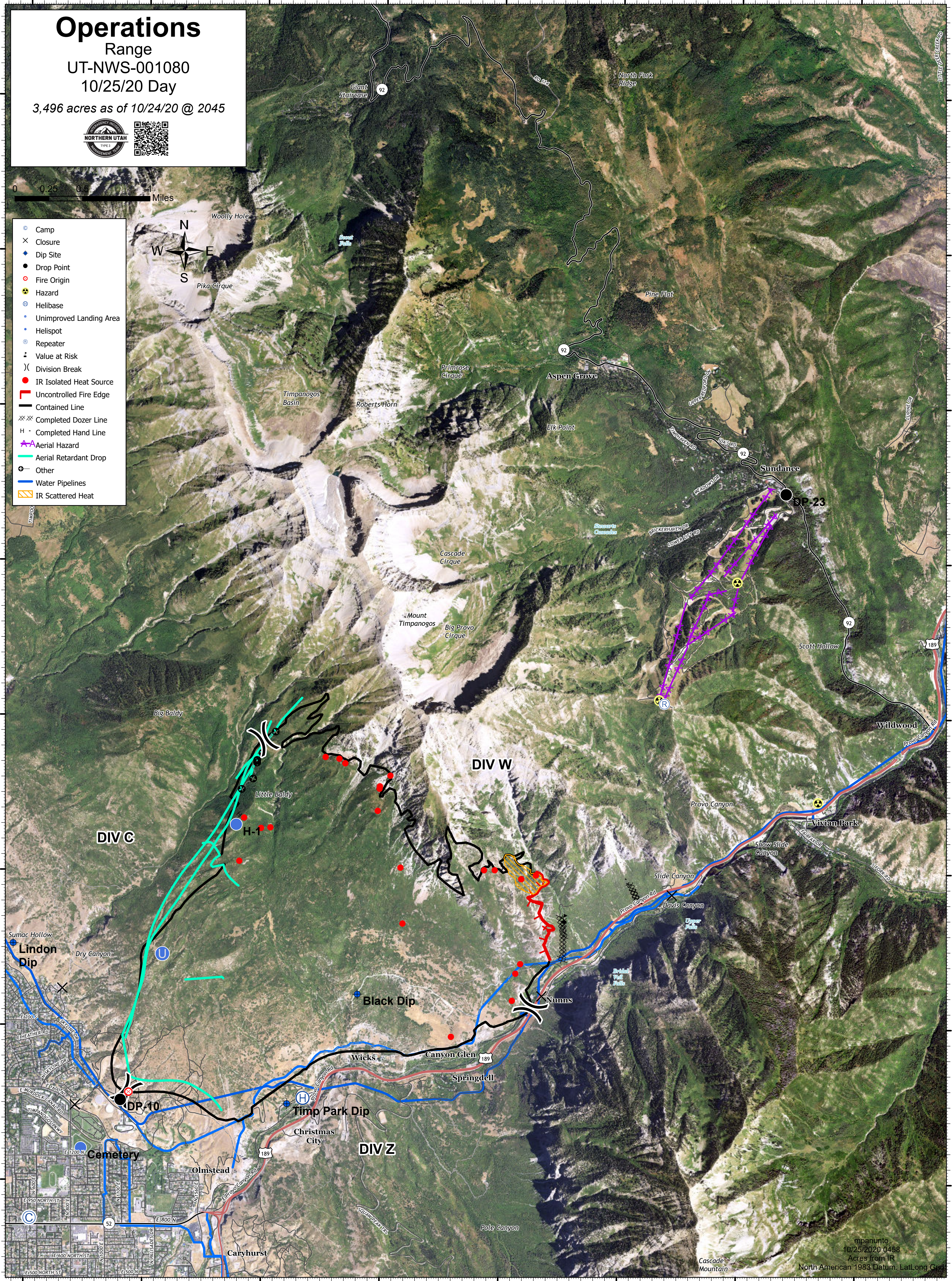
3,496 acres as of 10/24/20 @ 2045



0 0.25 0.5 1 Miles



- Camp
- × Closure
- + Dip Site
- Drop Point
- Fire Origin
- ☠ Hazard
- ⊕ Helibase
- Unimproved Landing Area
- Helispot
- ⊕ Repeater
- ⚠ Value at Risk
-) Division Break
- IR Isolated Heat Source
- ▬ Uncontrolled Fire Edge
- ▬ Contained Line
- ⊗ Completed Dozer Line
- H Completed Hand Line
- ⚡ Aerial Hazard
- ▬ Aerial Retardant Drop
- ▬ Water Pipelines
- ▬ IR Scattered Heat



111°41'W 111°40'W 111°39'W 111°38'W 111°37'W 111°36.01'W 111°35'W 111°34'W

mpanunto
10/25/2020 0458
Acres from IR
North American 1983 Datum, Lat/Long Grid