

111°40'0"W

111°39'0"W

111°38'0"W

111°37'0"W

111°36'0"W

40°22'0"N

40°21'0"N

40°20'0"N





40°22'0"N


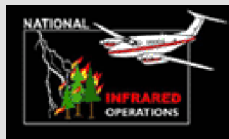
40°21'0"N

40°20'0"N

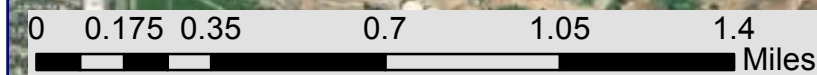
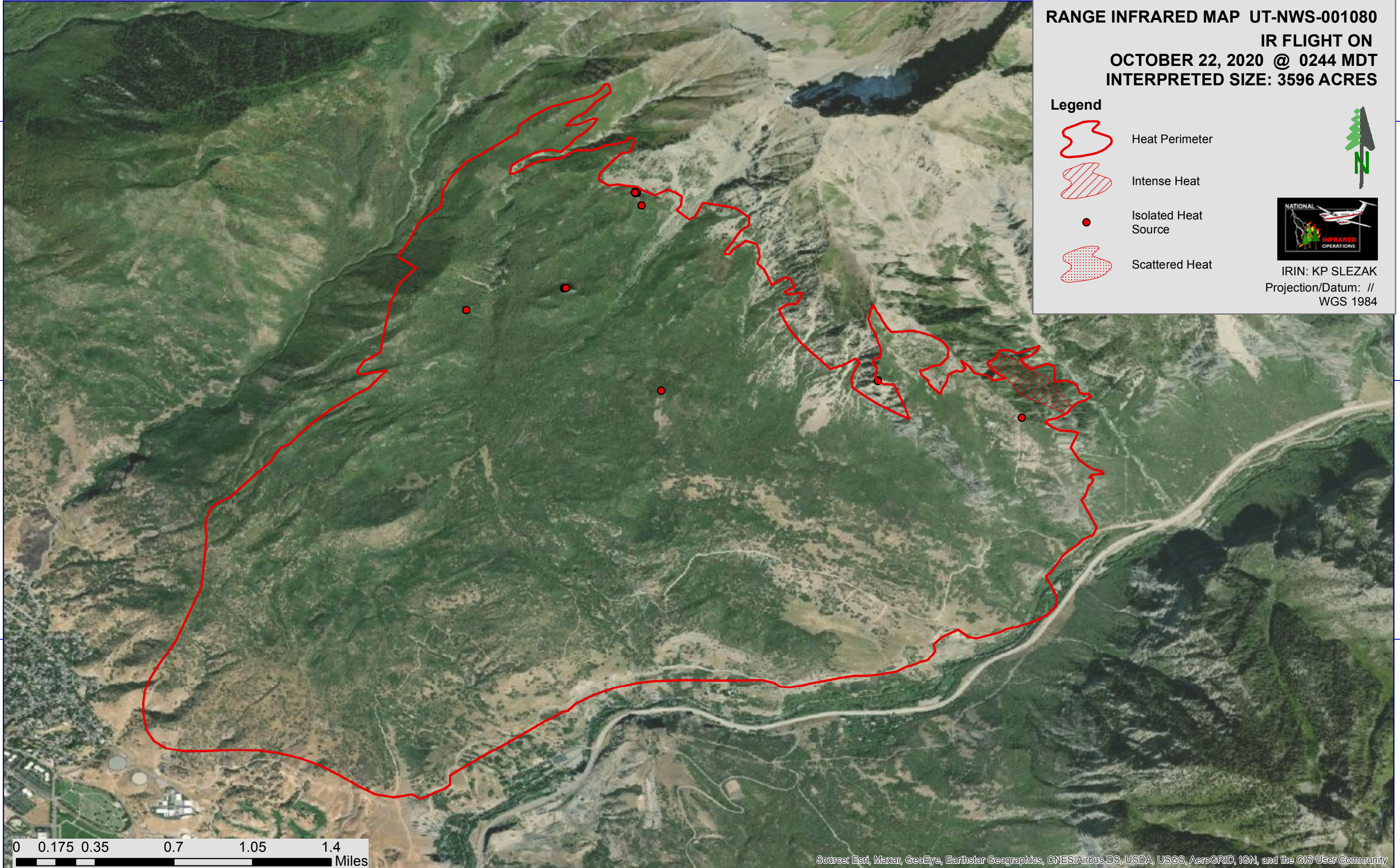
RANGE INFRARED MAP UT-NWS-001080
IR FLIGHT ON
OCTOBER 22, 2020 @ 0244 MDT
INTERPRETED SIZE: 3596 ACRES

Legend

-  Heat Perimeter
-  Intense Heat
-  Isolated Heat Source
-  Scattered Heat

IRIN: KP SLEZAK
 Projection/Datum: //
 WGS 1984



Source: Esri, Maxar, GeoEye, Earthstar Geographics, CNES/Airbus DS, USDA, USGS, AeroGRID, IGN, and the GIS User Community

111°40'0"W

111°39'0"W

111°38'0"W

111°37'0"W

111°36'0"W