

111°40'0"W

111°39'0"W

111°38'0"W

111°37'0"W

111°36'0"W

40°22'0"N

40°21'0"N

40°20'0"N




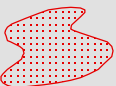
40°22'0"N


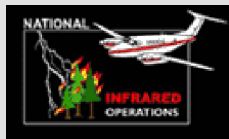
40°21'0"N

40°20'0"N

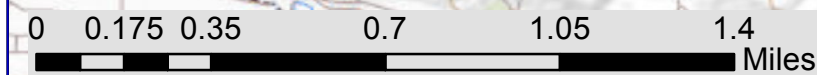
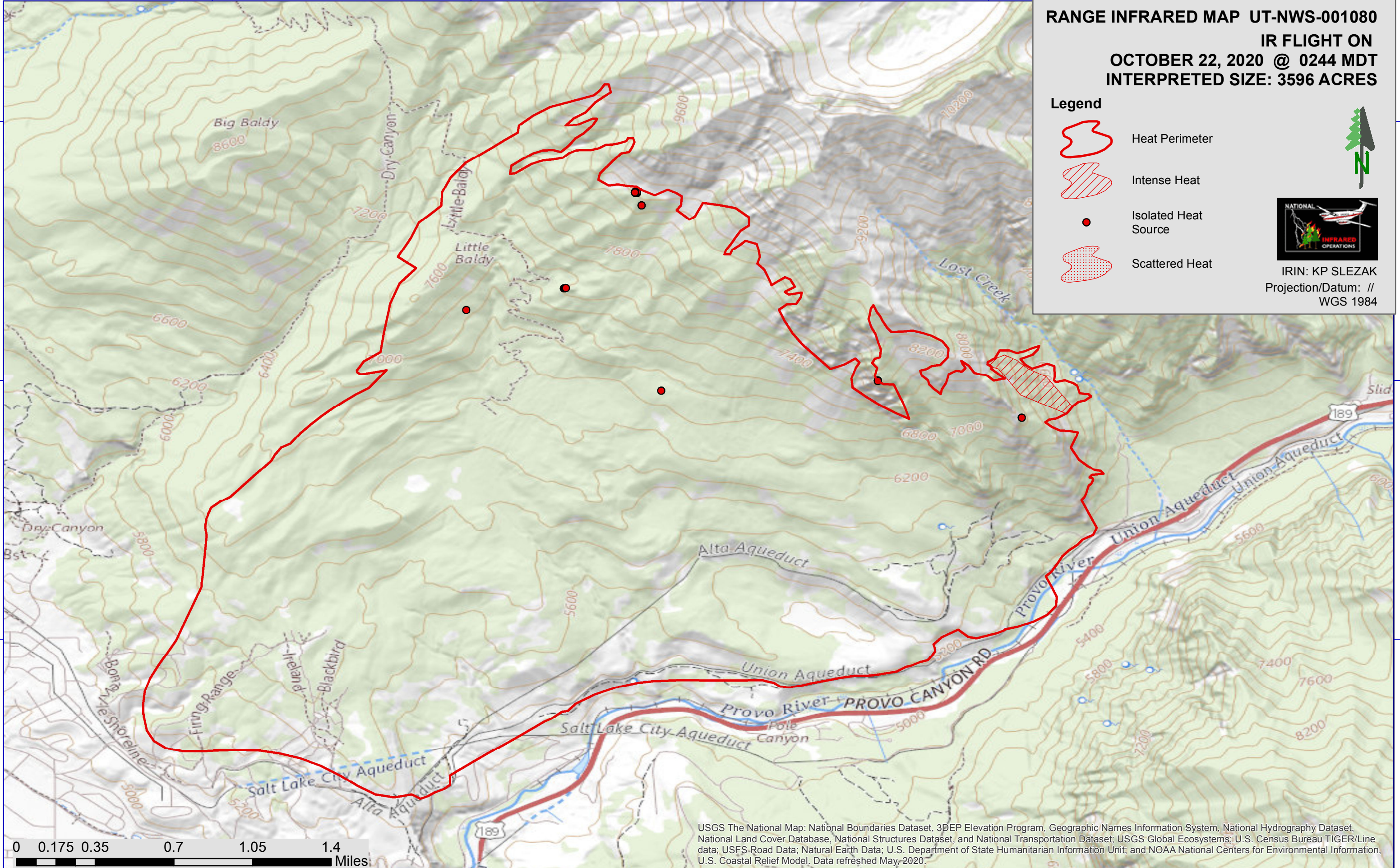
**RANGE INFRARED MAP UT-NWS-001080**  
**IR FLIGHT ON**  
**OCTOBER 22, 2020 @ 0244 MDT**  
**INTERPRETED SIZE: 3596 ACRES**

**Legend**

-  Heat Perimeter
-  Intense Heat
-  Isolated Heat Source
-  Scattered Heat

IRIN: KP SLEZAK  
 Projection/Datum: //  
 WGS 1984



USGS The National Map: National Boundaries Dataset, 3DEP Elevation Program, Geographic Names Information System, National Hydrography Dataset, National Land Cover Database, National Structures Dataset, and National Transportation Dataset; USGS Global Ecosystems; U.S. Census Bureau TIGER/Line data; USFS Road Data; Natural Earth Data; U.S. Department of State Humanitarian Information Unit; and NOAA National Centers for Environmental Information, U.S. Coastal Relief Model. Data refreshed May, 2020.

111°40'0"W

111°39'0"W

111°38'0"W

111°37'0"W

111°36'0"W