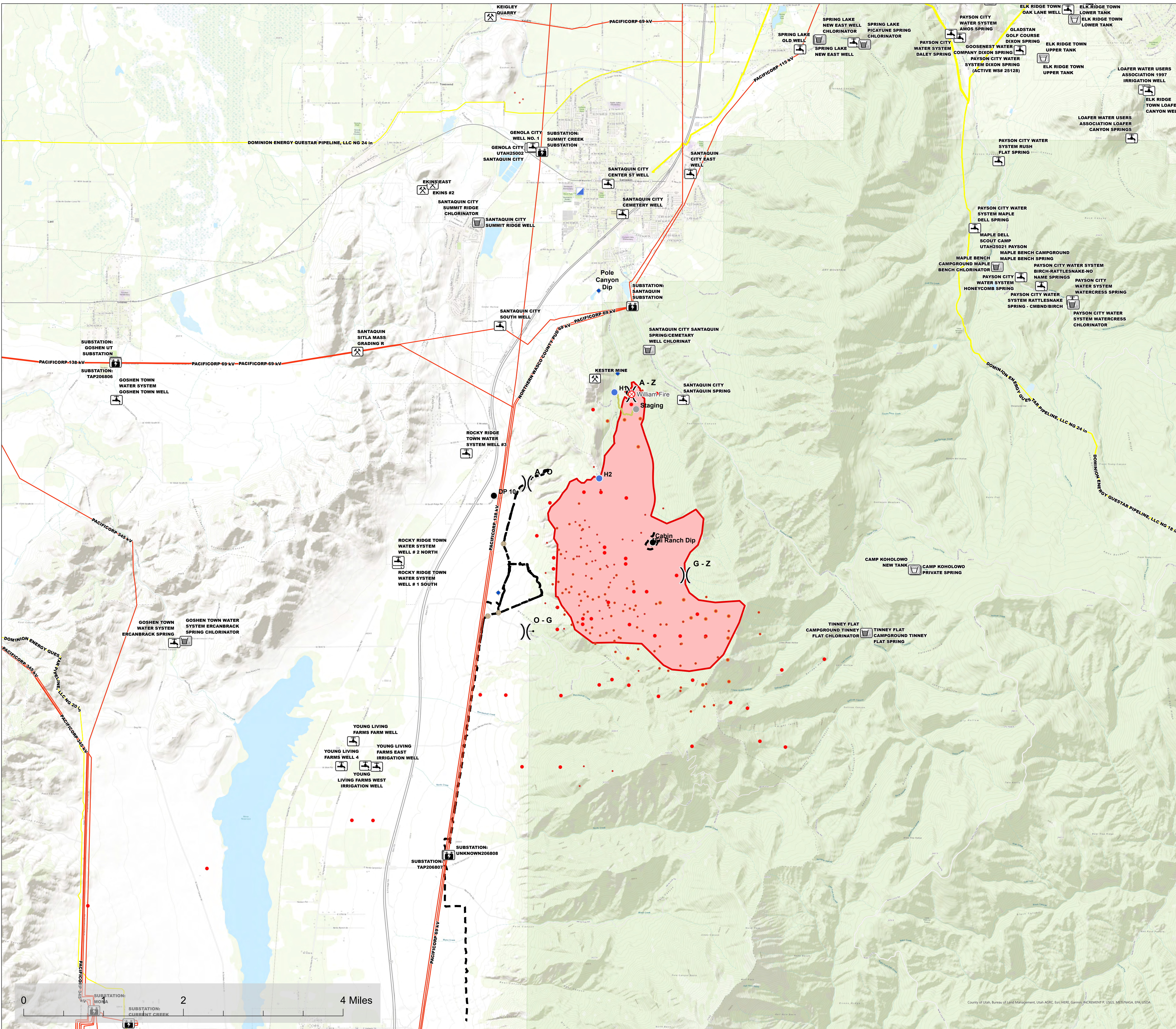


Critical Infrastructure Near the William Fire 9/8/2020



- | | |
|-----------------------------|----------------------------------|
| Oil and Gas Wells | Staging Area |
| Active Mines | Stream Crossing |
| UCA Communication Sites | Structure Wrap |
| Electric Substations | Water Source |
| Water System Facilities | Restricted Water Source |
| Water Sources | Water Development or Draft Site |
| Storage | Value at Risk |
| Treatment Plant | Unknown |
| Electric Transmission Lines | Other |
| Transmission Pipelines | Segment Break |
| Event Point | Zone Break |
| Aerial Hazard | Division Break |
| Aerial Ignition | Branch Break |
| Airstrip or Airport | Event Line |
| Bridge | Uncontrolled Fire Edge |
| Camp | Contained Line |
| Clean Up Area | Completed Dozer Line |
| Closure | Completed Hand Line |
| Culvert | R - Road as Completed Line |
| Dip Site | Access or Improved Road |
| Drop Point | Line Break Completed |
| Dozer Push | Completed Plow Line |
| Fence - Cut/Damaged | Explosive Line |
| Fire Origin | Proposed Burnout |
| Fire Station | Active Burnout |
| First Aid Station | Completed Burnout |
| Gate | Proposed Dozer Line |
| Hazard | Fire Break Planned or Incomplete |
| Hazard Tree | Planned Fire Line |
| Helibase | Planned Secondary Line |
| Unimproved Landing Area | Aerial Hazard |
| Hotspot | Aerial Foam Drop |
| Incident Base | Hot Spot |
| Incident Command Post | Aerial Ignition |
| Internet Access | Aerial Retardant Drop |
| Landmark | Aerial Water Drop |
| Landing or Log Deck | Air Tanker Foam |
| Lookout | Air Tanker Retardant |
| Mobile Weather Unit | Helitanker Foam |
| Repair Point | Helitanker Water |
| Repeater | Temporary Flight Restriction |
| Resource Location | UAS Launch and Recovery Zone |
| Retardant in Avoidance Area | Escape Route |
| Retardant/Mud Pit | Highlighted Manmade Feature |
| Road Repair | Ridge/Geographic Feature |
| Safety Zone | Fence |
| Sling Site | Repair Line |
| Spot Fire | Road Repair |
| | Fire Spread Prediction |
| | Management Action Point |
| | Other |
| | Unknown |



FOR OFFICIAL USE ONLY

Data Sources: Utah Communications Authority
 Utah Division of Drinking Water
 PacifiCorp (Rocky Mountain Power)
 Dominion Energy
 National Pipeline Mapping System
 U.S. Department of Homeland Security, HIFLD Open Data
 U.S. Department of Homeland Security, HIFLD Secure Data
 Utah Automated Geographic Reference Center
 Utah Division of Oil, Gas and Mining
 National Interagency Fire Center Enterprise Geospatial Portal

Map Produced By: The Utah Division of Emergency Management