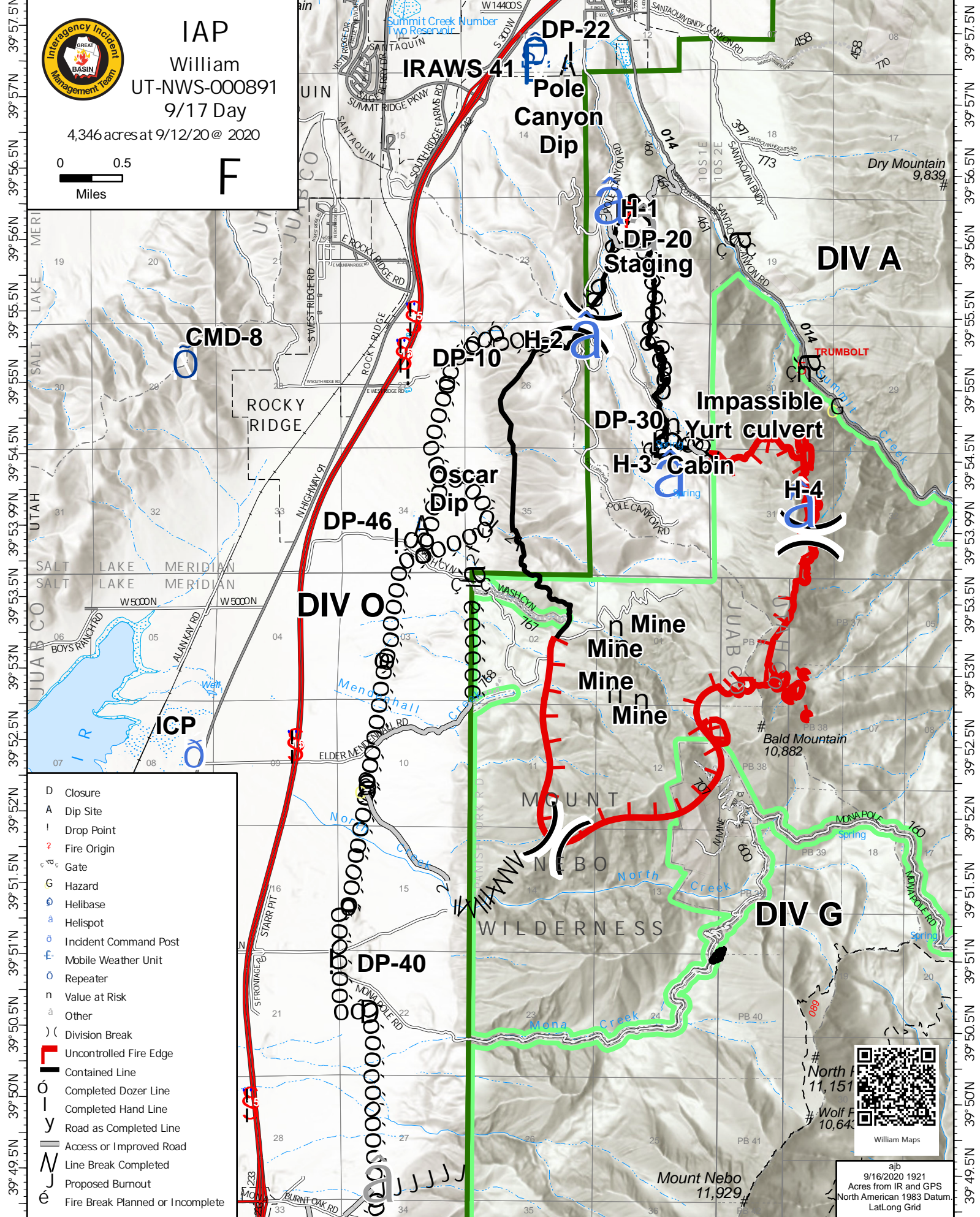
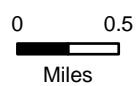


111°52'W 111°51.01'W 111°50'W 111°49'W 111°48'W 111°47'W 111°46'W 111°45'W 111°44'W



**IAP**  
William  
UT-NWS-000891  
9/17 Day  
4,346 acres at 9/12/20 @ 2020  
**F**



39°57.5'N 39°57'N 39°56.5'N 39°56'N 39°55.5'N 39°55'N 39°54.5'N 39°54'N 39°53.99'N 39°53.5'N 39°53'N 39°52.5'N 39°52'N 39°51.5'N 39°51'N 39°50.5'N 39°50'N 39°49.5'N

39°57.5'N 39°57'N 39°56.5'N 39°56'N 39°55.5'N 39°55'N 39°54.5'N 39°54'N 39°53.99'N 39°53.5'N 39°53'N 39°52.5'N 39°52'N 39°51.5'N 39°51'N 39°50.5'N 39°50'N 39°49.5'N

- D Closure
- A Dip Site
- ! Drop Point
- 🔥 Fire Origin
- ⚡ Gate
- G Hazard
- 📍 Hellbase
- 📍 Hellspot
- 📍 Incident Command Post
- 📍 Mobile Weather Unit
- 📍 Repeater
- 📍 Value at Risk
- 📍 Other
- ) ( Division Break
- 🔴 Uncontrolled Fire Edge
- 🟡 Contained Line
- 🟢 Completed Dozer Line
- 🟢 Completed Hand Line
- 🟢 Road as Completed Line
- 🟢 Access or Improved Road
- 🟢 Line Break Completed
- 🟢 Proposed Burnout
- 🟢 Fire Break Planned or Incomplete



William Maps

ajb  
9/16/2020 1921  
Acres from IR and GPS  
North American 1983 Datum  
LatLong Grid